



CONTENTS



★ Overview	3
★ Prerequisites	9
★ Specification sheets	11
★ Packs :	
	Starter Pack	16
	Player Pack	18
	Premium 2 Glass Pack	20
★ Installation instructions :	
	Recorder Box / Switch Box	22
	Player Box	28
	Player Premium 2 Glass Box	33
	Cameras	48
	Buzzers	56
	Cap (optional)	58
	Wifi AP (optional)	60
	Bridge (optional)	62
★ Post Matches	64
★ SPASH TV	73
★ Commissioning	77

OVERVIEW



GOOD TO KNOW



We strongly recommend that you hire a professional with the necessary qualifications to install electrical and network equipment.

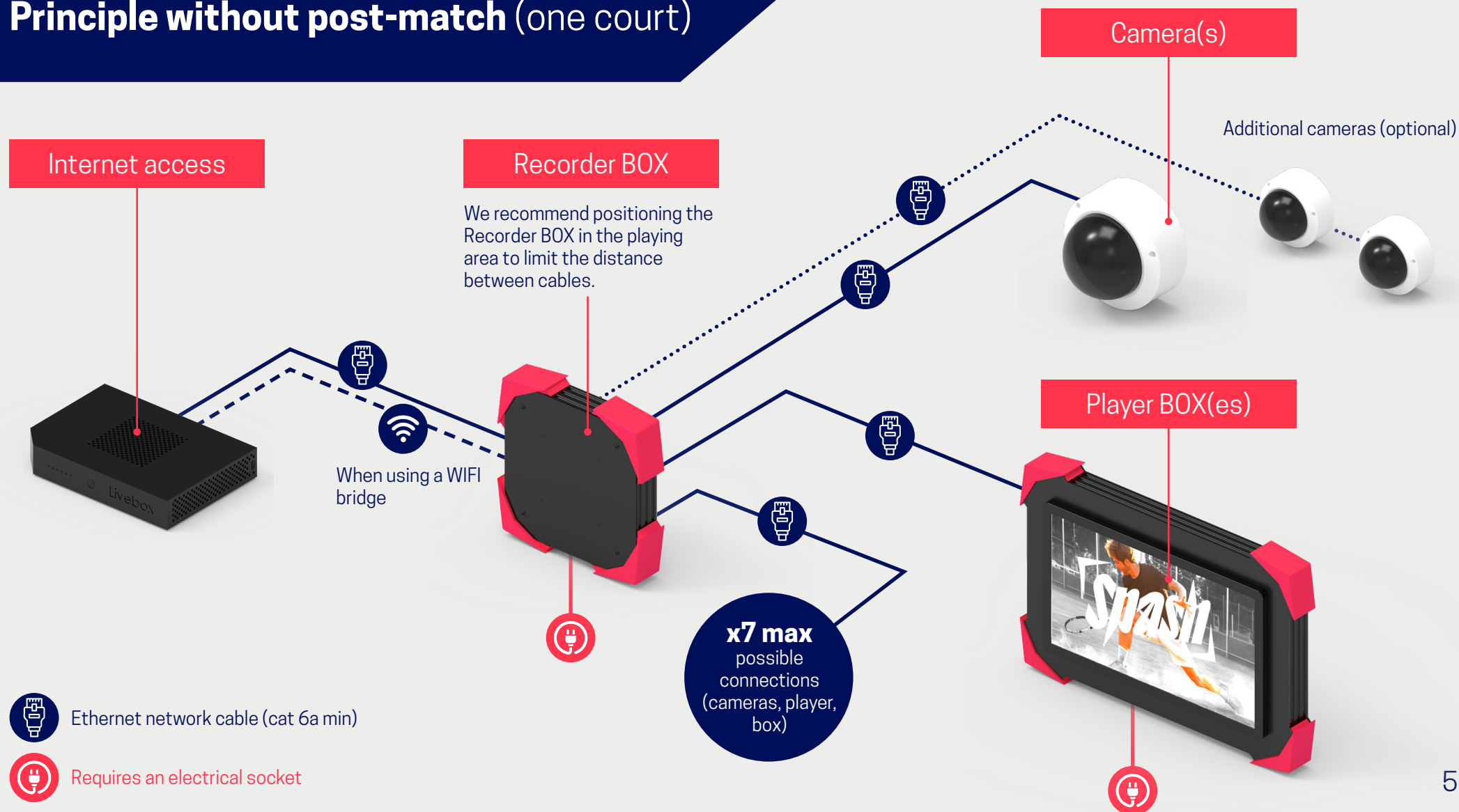
Inspect the packages to check that no equipment is missing or damaged. If this is not the case, call technical support on **+33 4 81 69 47 33**.

SPASH equipment operates on a local subnetwork broadcast by the Recorder BOX. Any equipment outside this network will not work.

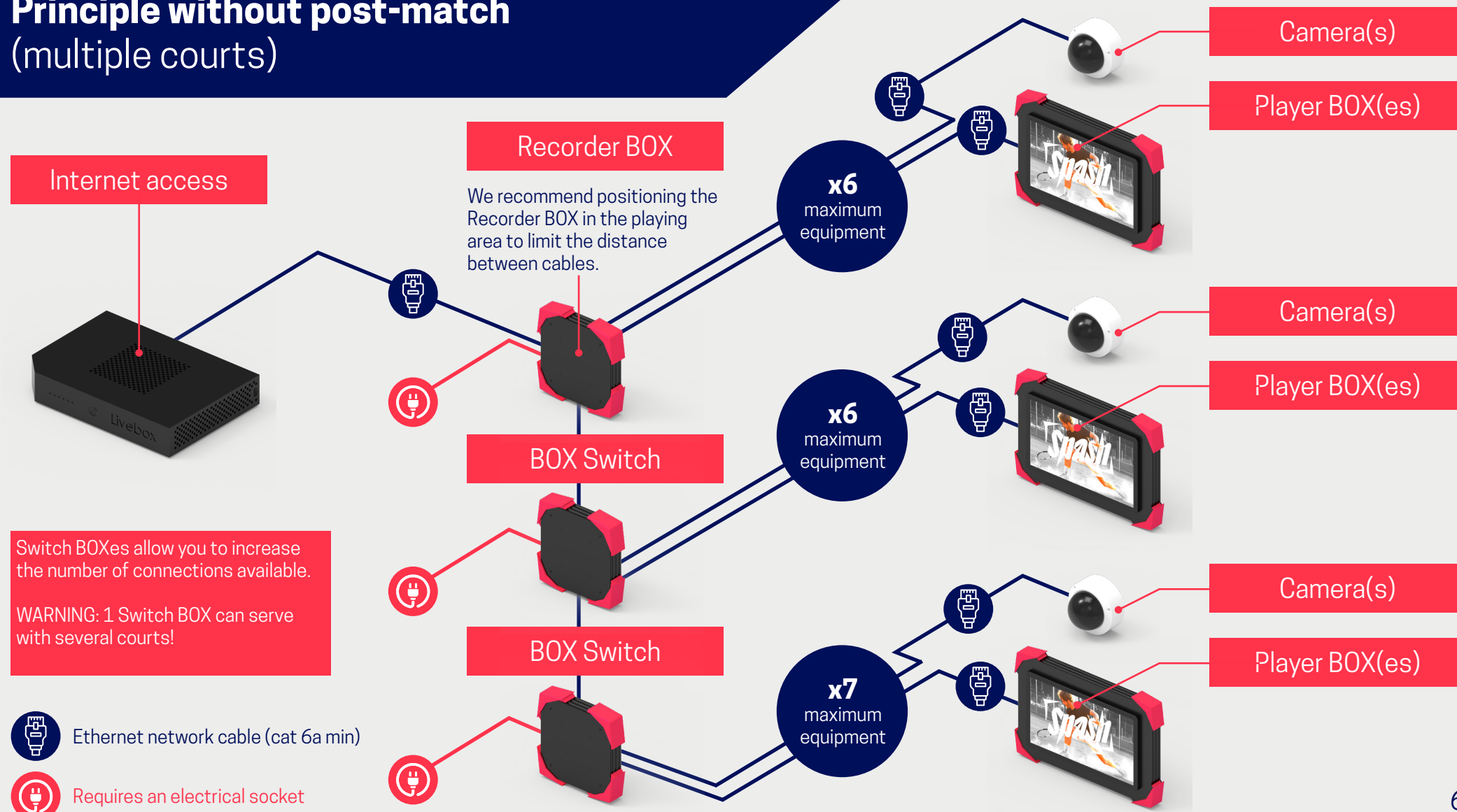
OVERVIEW



Principle without post-match (one court)



Principle without post-match (multiple courts)



OVERVIEW

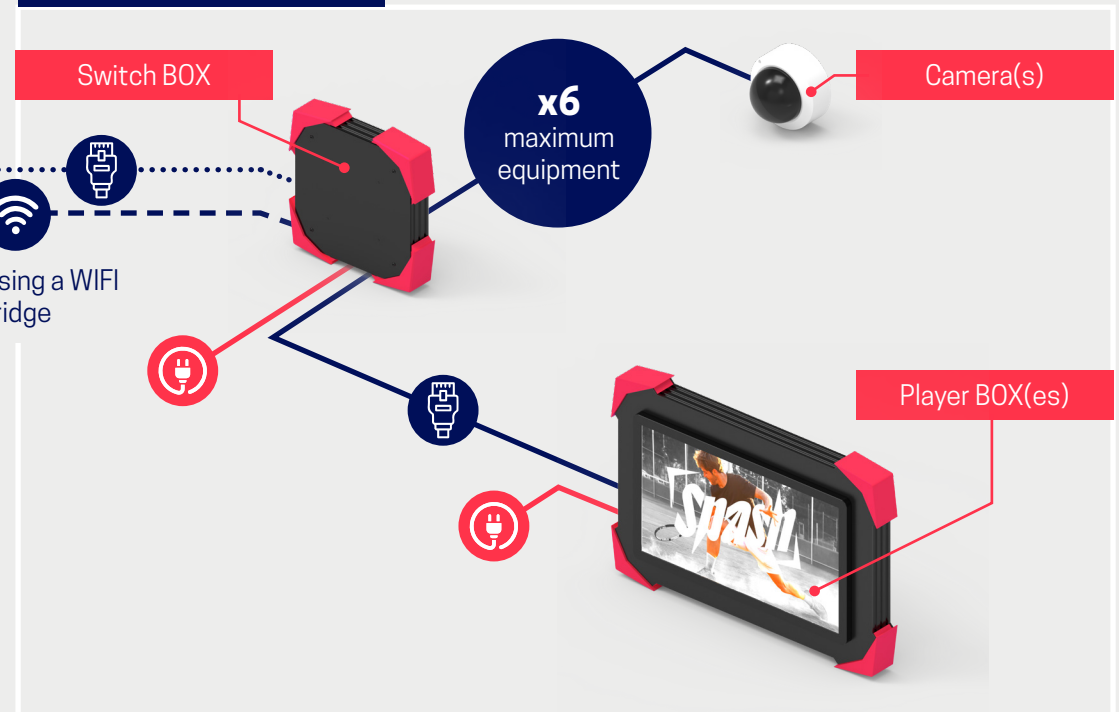


Principle with post match

Clubhouse area / Bar



Playing area / Fields



Ethernet network cable (cat 6a min)



Requires an electrical socket

Principle with launch terminal

Recorder BOX

We recommend positioning the Recorder BOX in the playing area to limit the distance between cables.

Wifi AP

It enables the buzzer to operate

Camera(s)

Additional cameras (optional)

Player BOX(es) Launch terminal

Allows you to control several courts at the same time

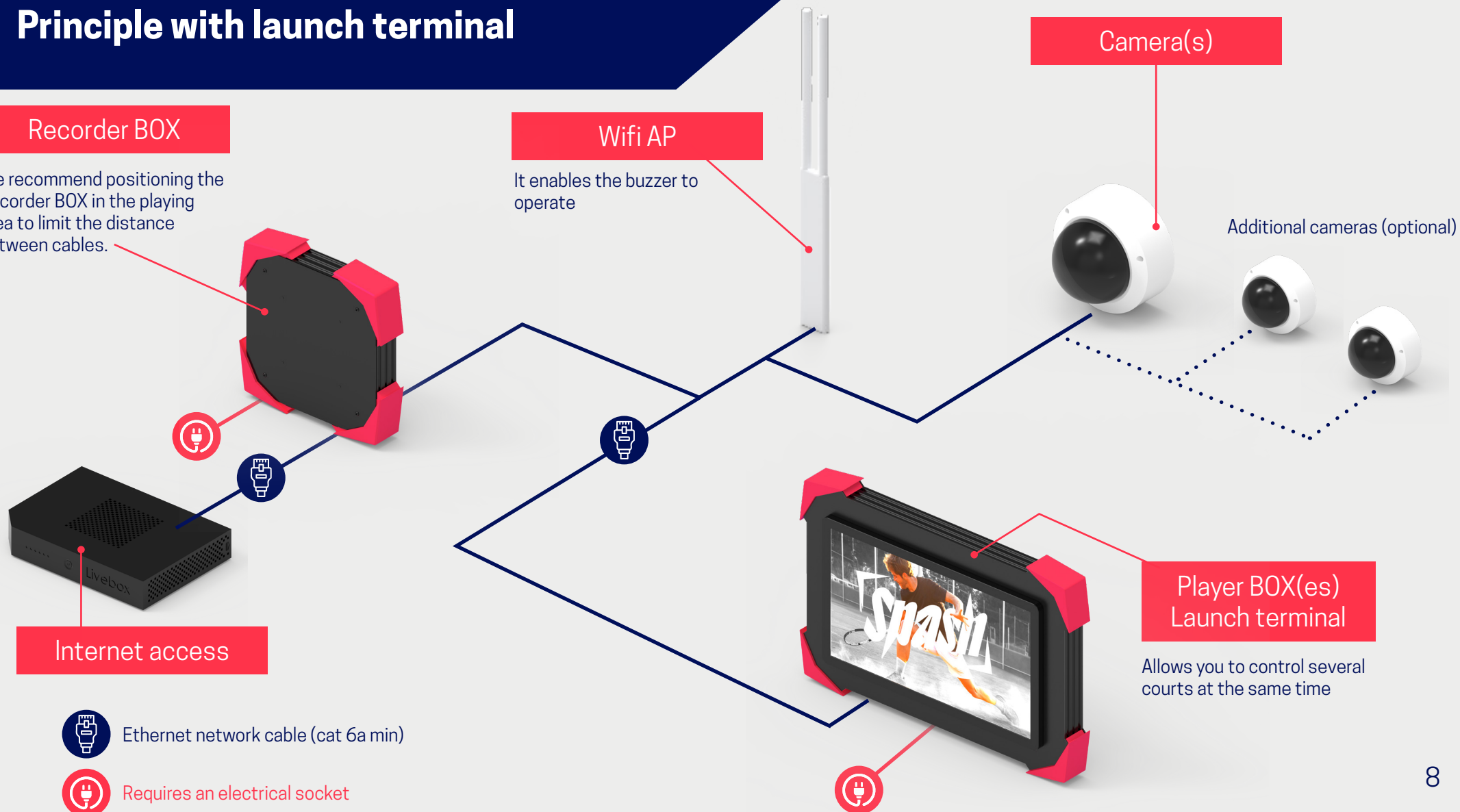
Internet access



Ethernet network cable (cat 6a min)



Requires an electrical socket



PREREQUISITES



PREREQUISITES



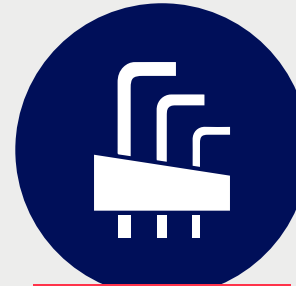
Equipment required for installation



DRILL



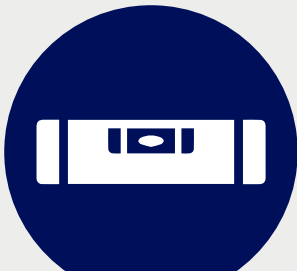
ELECTRIC SCREWDRIVER



ALLEN KEYS



SCREWDRIVER



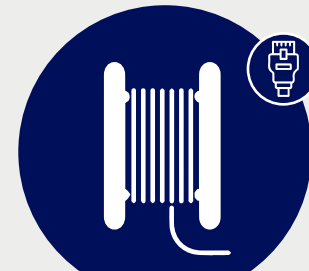
SPIRIT LEVEL



SCREWS AND PLUGS



ELECTRIC CABLE



NETWORK CABLE

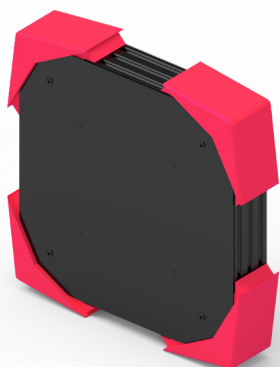
SPECIFICATION SHEET



SPECIFICATION SHEET



Recorder BOX



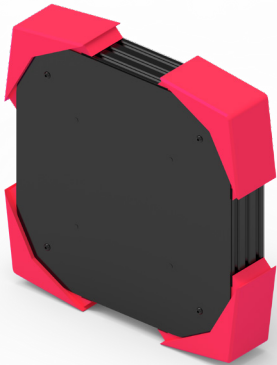
RECORDER BOX

Interface	
Ethernet interface	1 Port WAN 10/100/1000 Mbps
Wifi interface	2.4 Ghz - 5 Ghz, 300 Mbps (2.4Ghz), 867 Mbps (5Ghz)
Switch interface	8 Ports POE LAN 10/100/1000 Mbps, 30W /port, 62W Total
Reset	Hardware button
General	
Power	Connections via terminals 110-240V 50-60Hz Power consumption <55W, max 110W
Dimensions	373.4 x 373.4 x 161 mm
Weight	8.2 Kgs
Environmental conditions	
Working temperature	0°C - 50°C
Humidity level	10% - 80 %
Storage temperature	-5°C - 60 °C
Storage humidity	0% - 70%
Altitude	Below 5000m
Certifications	
Protection	IP54
Standards	CE, FCC, ROHS

SPECIFICATION SHEET



Switch BOX



SWITCH BOX

Interface	
Switch interface	8 Ports POE LAN 10/100/1000 Mbps, 30W /port, 62W Total
Reset	Hardware button
General	
Power	Connections via terminals 110-240V 50-60Hz Power consumption <30W, max 62W
Dimensions	373.4 x 373.4 x 161 mm
Weight	6.2 Kgs
Environmental conditions	
Working temperature	0°C - 50°C
Humidity level	10% - 80 %
Storage temperature	-5°C - 60 °C
Storage humidity	0% - 70%
Altitude	Below 5000m
Certifications	
Protection	IP54
Standards	CE, FCC, ROHS

SPECIFICATION SHEET



Player BOX



PLAYER BOX

Interface	
Ethernet interface	1 Port LAN 10/100 Mbps
Wifi interface	2.4Ghz, 300Mbps
Audio	8 ohms 5W
Reset	Hardware button
General	
Power	Connections via terminals 110-240V 50-60Hz Power consumption 45W
Dimensions	802.4 x 541.9 x 125 mm
Weight	23 Kgs
Environmental conditions	
Working temperature	0°C - 50°C
Humidity level	10% - 80 %
Storage temperature	-5°C - 60 °C
Storage humidity	0% - 70%
Altitude	Below 5000m
Certifications	
Protection	IP54
Standards	CE, FCC, ROHS

SPECIFICATION SHEET



SPASH TV



SPASH TV

Interface	
Ethernet interface	1 LAN Port 100/100 Mbps
Wifi interface	2.4Ghz, 300Mbps
Audio	8 ohms 5W
Reset	Hardware button
General	
Power	Connections via terminals 110-240V 50-60Hz Power consumption 45W
Dimensions	1315 x 844 x 75 mm
Weight	35 kgs
Environmental conditions	
Working temperature	0°C - 50°C
Humidity level	10% - 80 %
Storage temperature	-5°C - 60 °C
Storage humidity	0% - 70%
Altitude	Below 5000m
Certifications	
Protection	IP54
Standards	CE,FCC,ROHS

PACKS

STARTER PACK



PACKS STARTER PACK

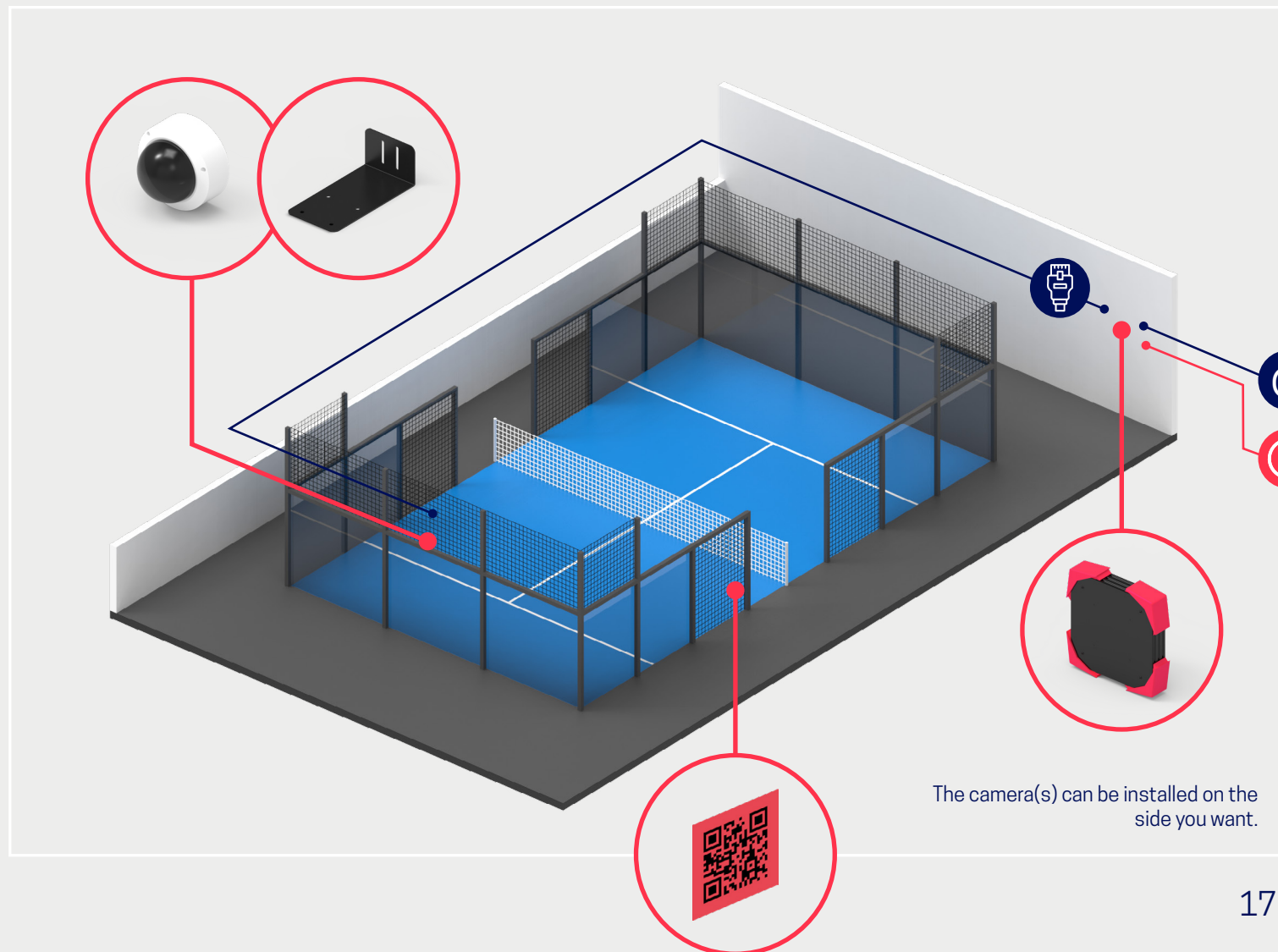


STARTER PACK equipment:

- x1 **RECORDER BOX**
- x1 **camera**
- x1 **camera support (L type)**
- x1 **QR code holder**

Options:

- Buzzers
- Additional cameras



PACKS

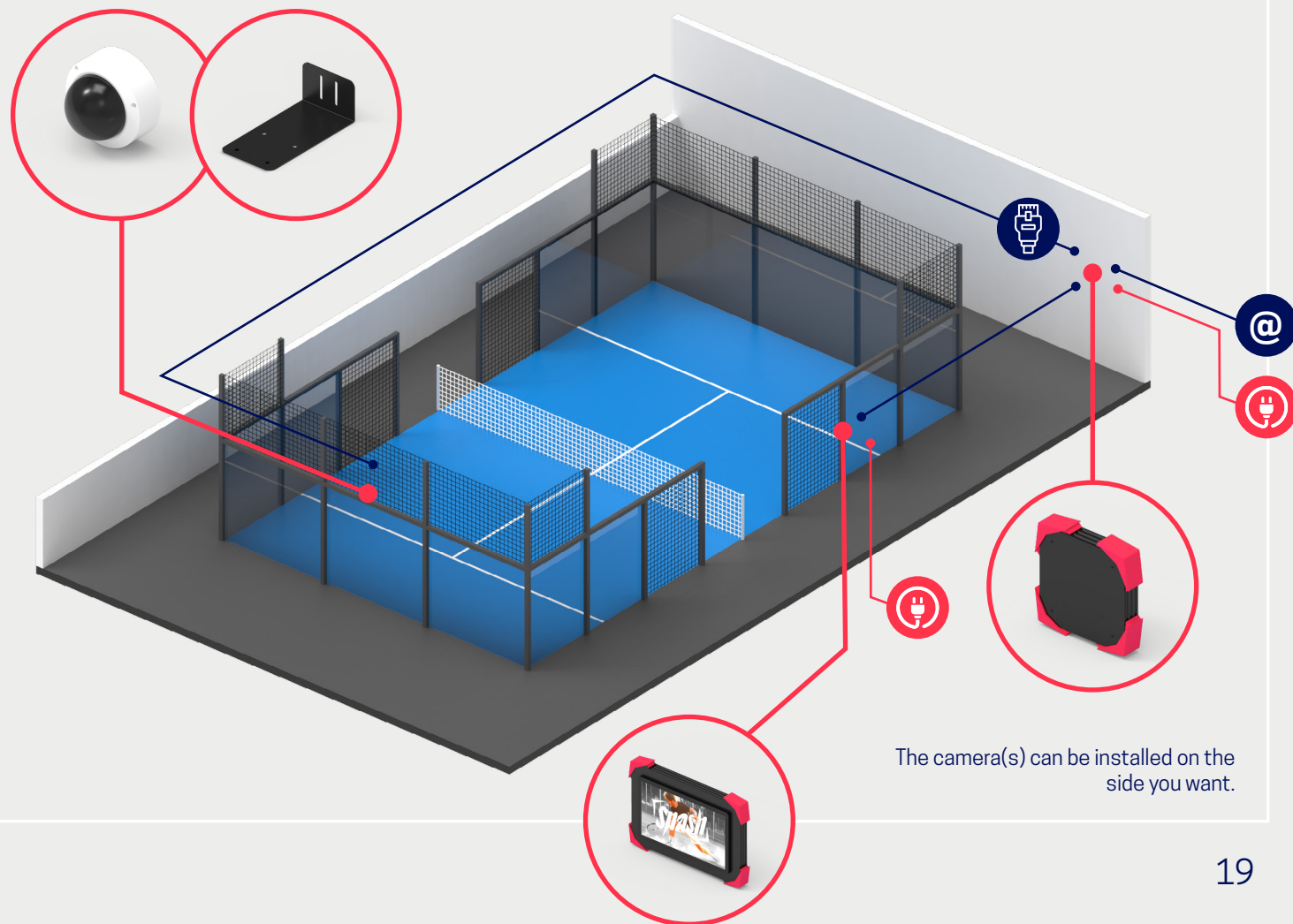
PLAYER PACK



Splash

- x1 **RECORDER BOX**
- x1 **camera**
- x1 **camera support (L type)**
- x1 **camera support (arm type)**
- x1 **PLAYER BOX**
- x1 **PLAYER BOX support**
- x2 **buzzers**
- x1 **BP cap (if outdoor)**

- Additional cameras



PACKS

PREMIUM 2 GLASS PACK



PACKS PREMIUM 2 GLASS PACK

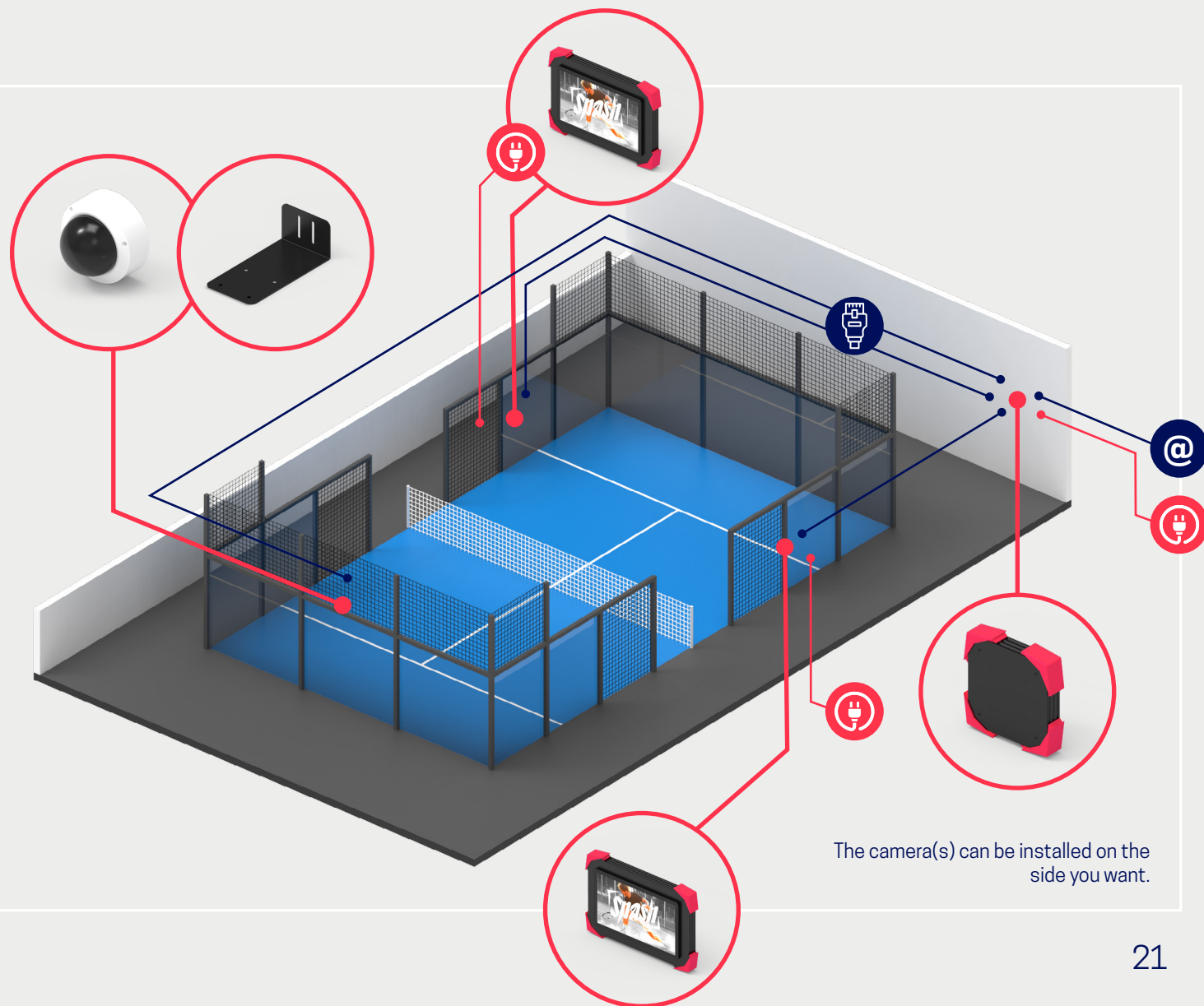


PREMIUM 2 GLASS PACK equipment:

- x1 **RECORDER BOX**
- x1 **camera**
- x1 **camera support (L type)**
- x1 **camera support (arm type)**
- x2 **PLAYER BOX**
- x2 **premium Padel supports**
- x2 **tactile films**
- x1 **film installation kit**

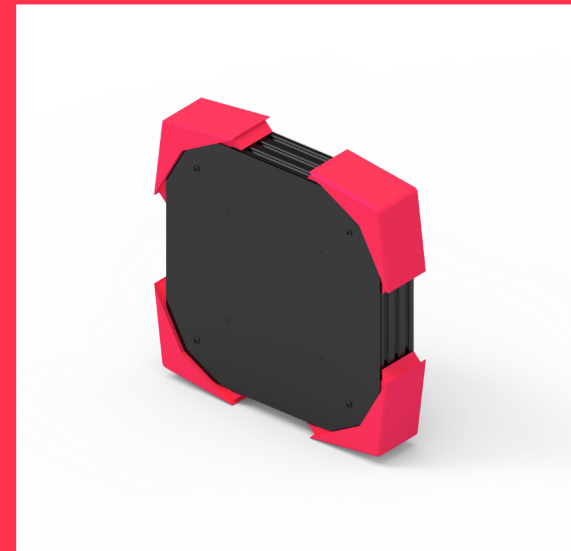
Options:

- Additional cameras



INSTALLATION INSTRUCTIONS

RECORDER BOX / SWITCH BOX



INSTALLATION INSTRUCTIONS BOX RECORDER / SWITCH BOX



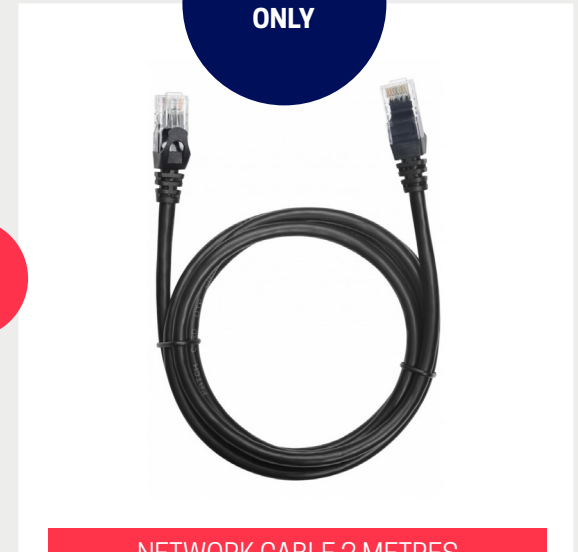
Equipment included in the box (depending on version)



RECORDER BOX + WALL MOUNT



POWER CABLE



NETWORK CABLE 2 METRES

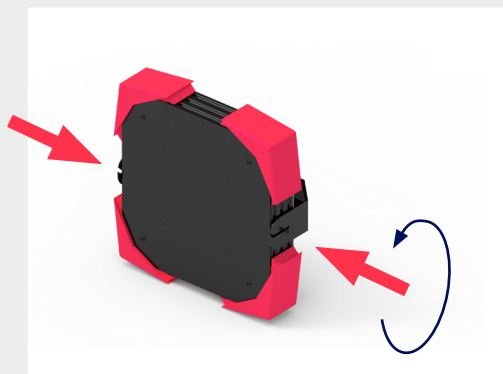


INSTALLATION INSTRUCTIONS RECORDER / SWITCH BOX

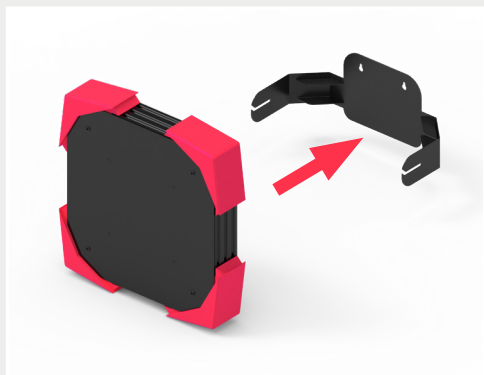


1

Preparation



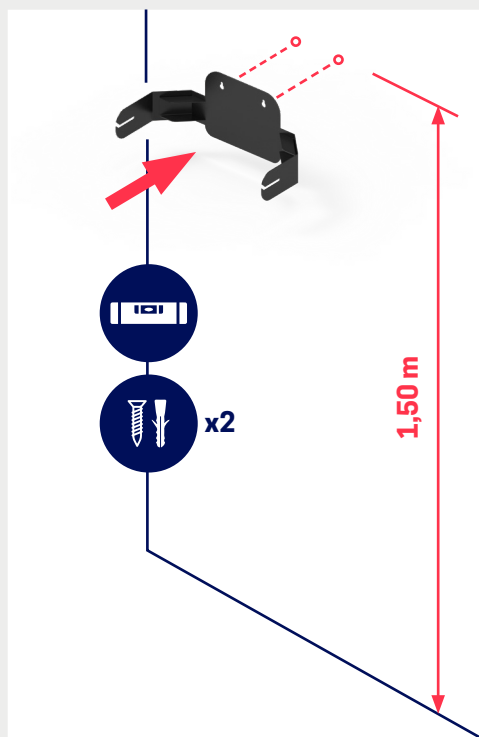
- Slightly unscrew the two screws on each side.



- Remove the wall mount.

2

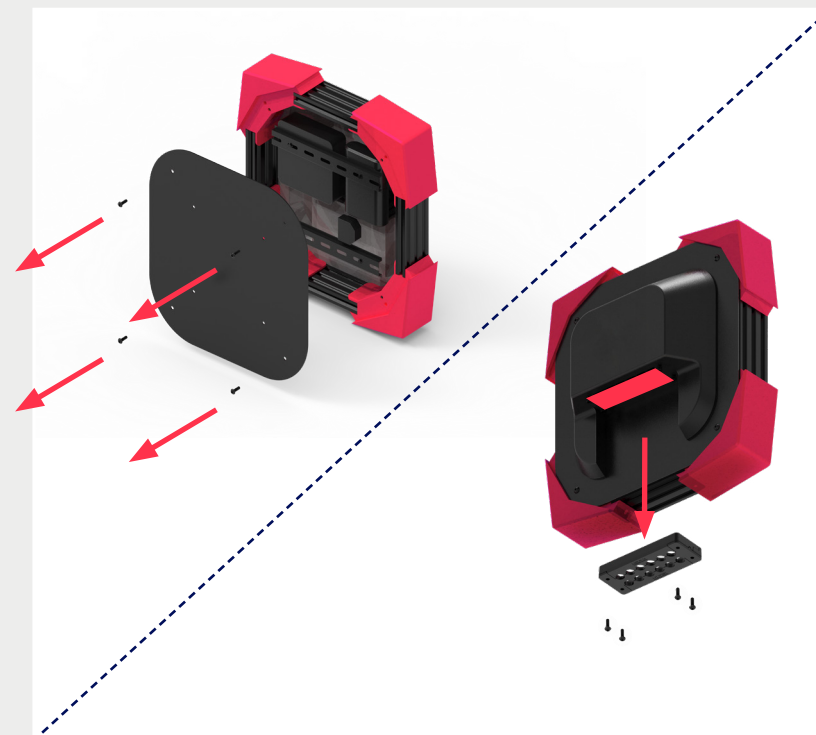
Fixing the wall mount



- Fix the mount to the wall using a spirit level..
- We recommend a height of 1.50 metres to enable you to work properly.
- This box must be accessible for maintenance.

3

Dismantling before wiring



- Loosen the screws on the front cover
- Remove the cable panel screws and then the two parts of the panel

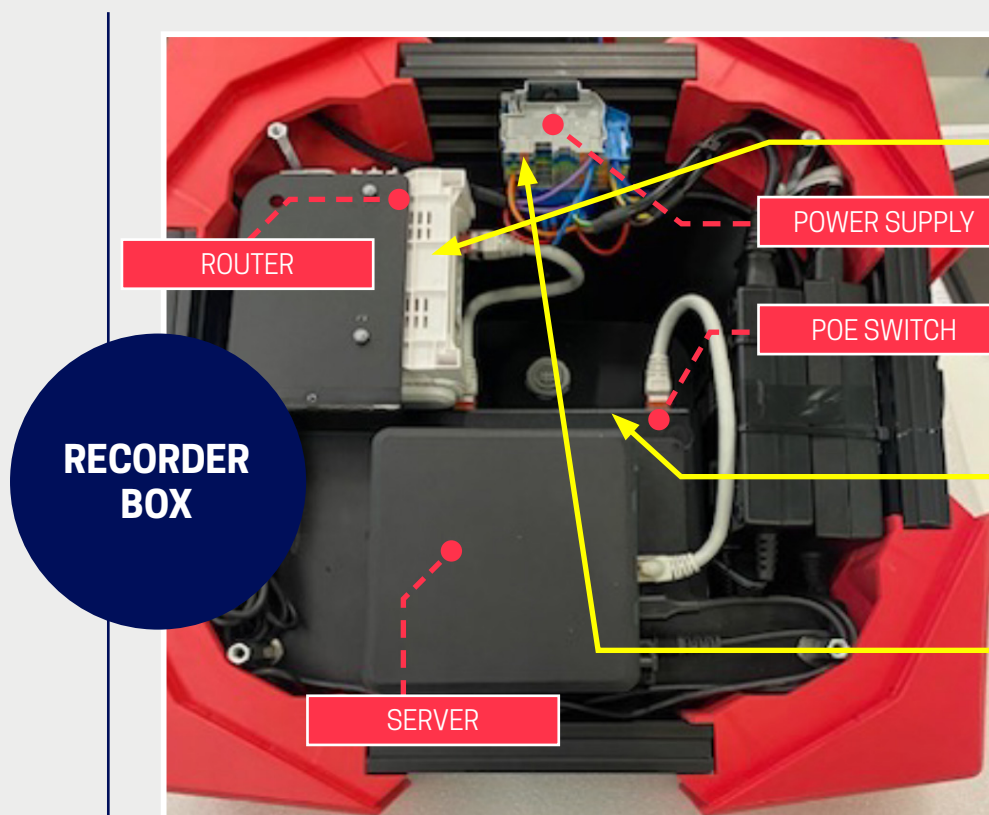
INSTALLATION INSTRUCTIONS RECORDER / SWITCH BOX



4.1

Wiring and power supply

RECORDER BOX



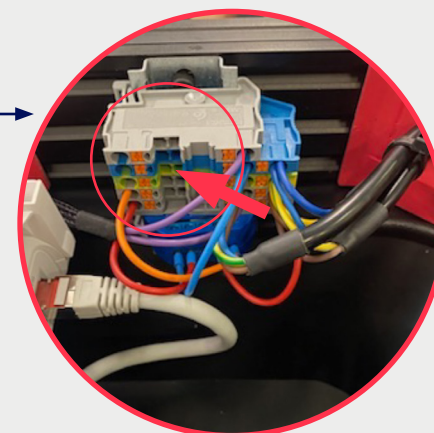
1

- Connect your Internet access to the router or the WAN port



2

- Connect the other SPASH equipment to the POE switch ports



3

- Connect the power supply to the terminal block (phase / earth / neutral)

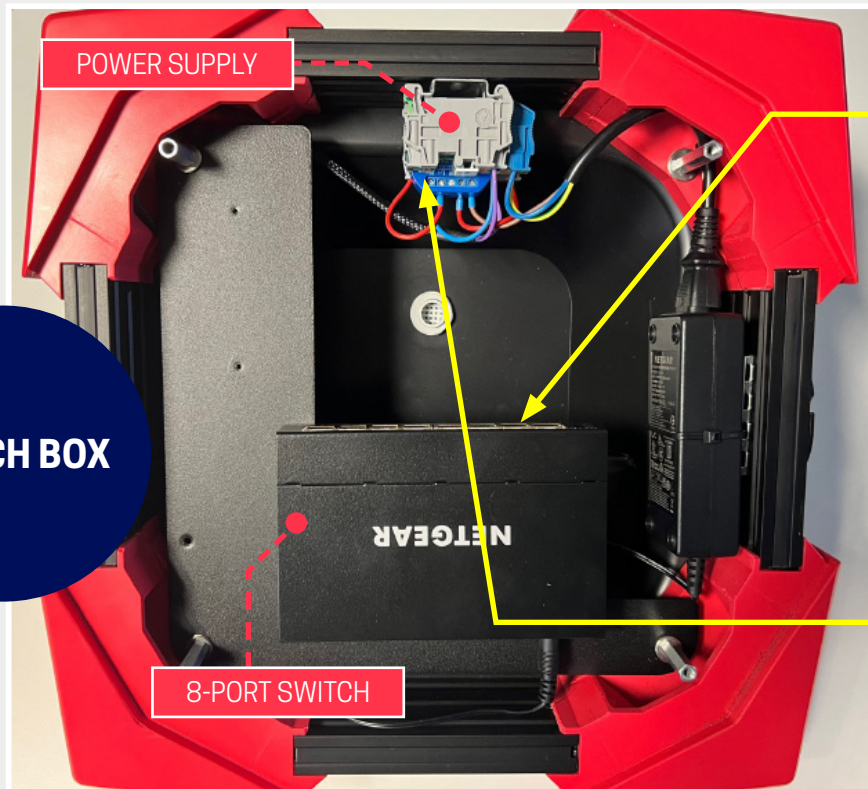
INSTALLATION INSTRUCTIONS RECORDER / SWITCH BOX



4.2

Wiring and power supply

SWITCH BOX



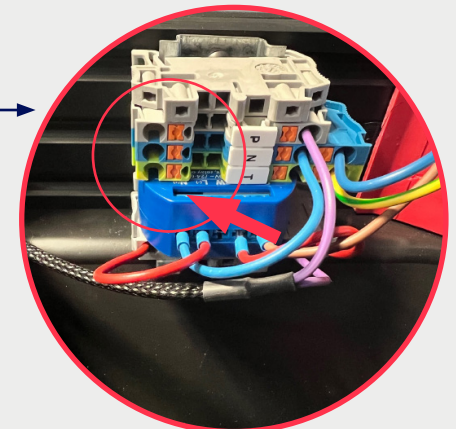
1

- Connect the other SPASH equipment to the switch ports.



2

- Connect the power supply to the terminal block (phase / earth / neutral)

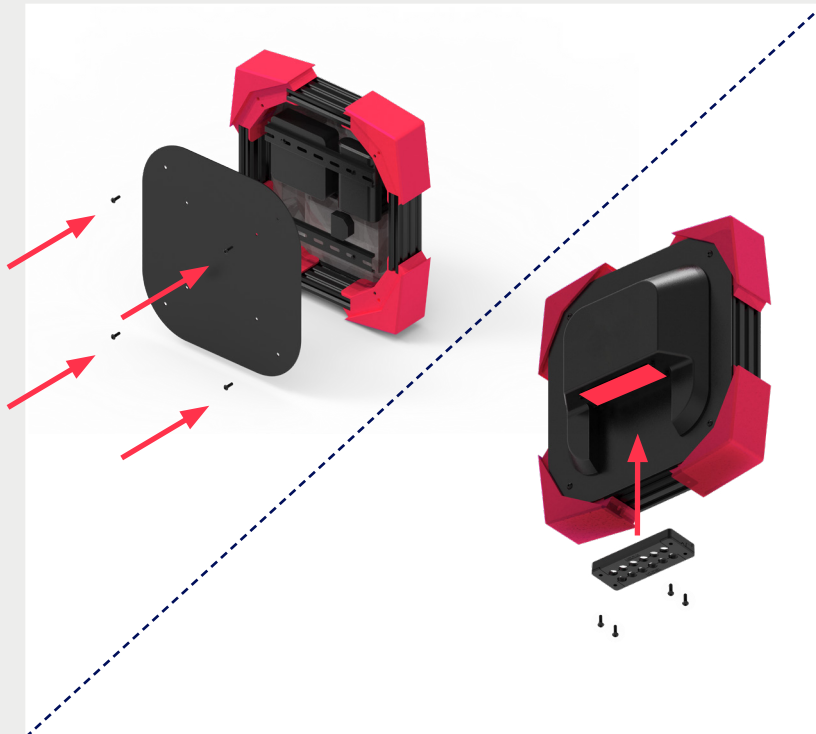


INSTALLATION INSTRUCTIONS RECORDER / SWITCH BOX



5

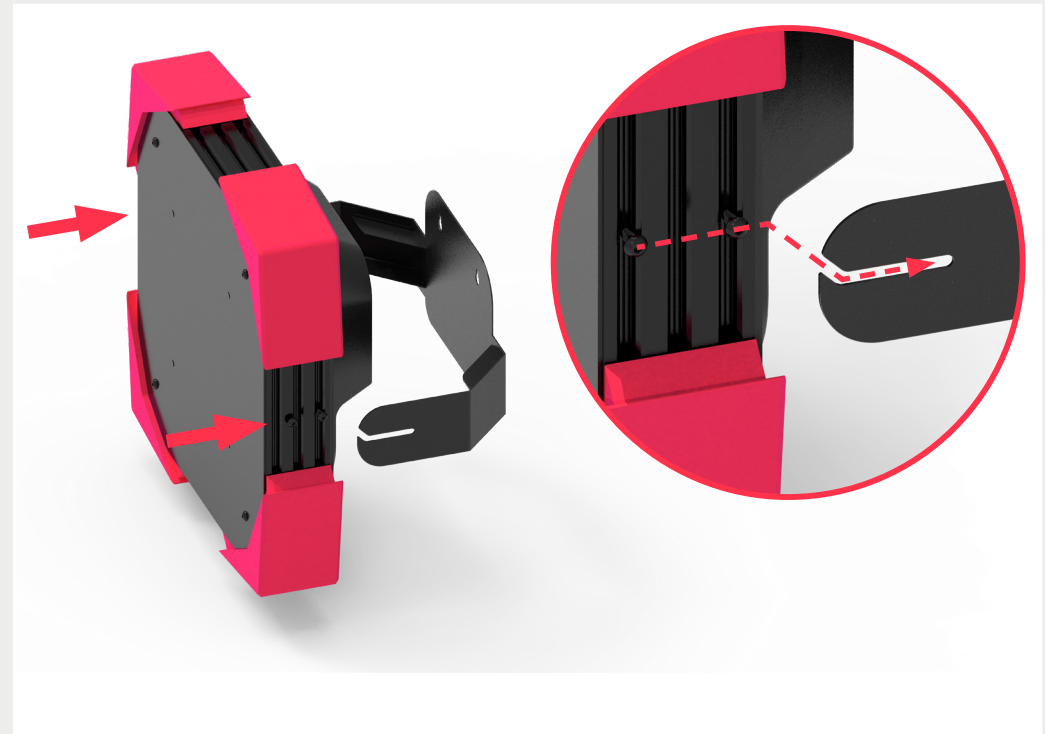
Reassembly after wiring



- Tighten screws on the front cover
- Insert the two parts of the cable panel and screw them back together.

6

Mounting BOX on wall bracket



- Engage the screws in the groove in the bracket then tighten the 4 screws

INSTALLATION INSTRUCTIONS

PLAYER BOX



INSTALLATION INSTRUCTIONS PLAYER BOX



Equipment included in the box (depending on version)

x1



PLAYER BOX

x1



TV WALL MOUNT

x1



POWER CABLE

x1



NETWORK PATCH CABLE

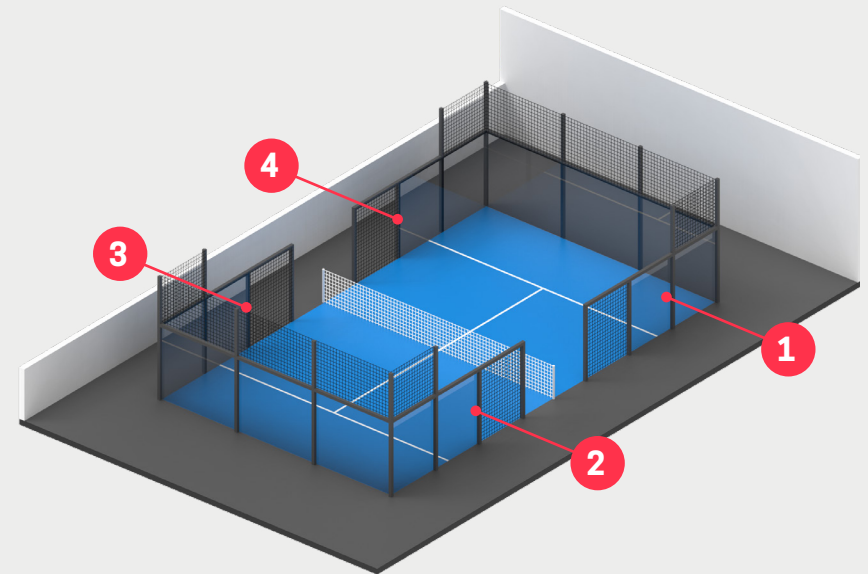
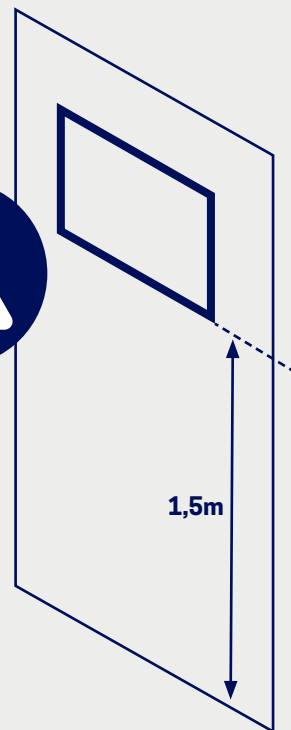
INSTALLATION INSTRUCTIONS PLAYER BOX



Mounting the screen

1

Install the supplied VESA TV bracket on one of the external poles at a height of 1.5m.



▪ For assembly: refer to the instructions in the packaging.

▪ 4 recommended positions

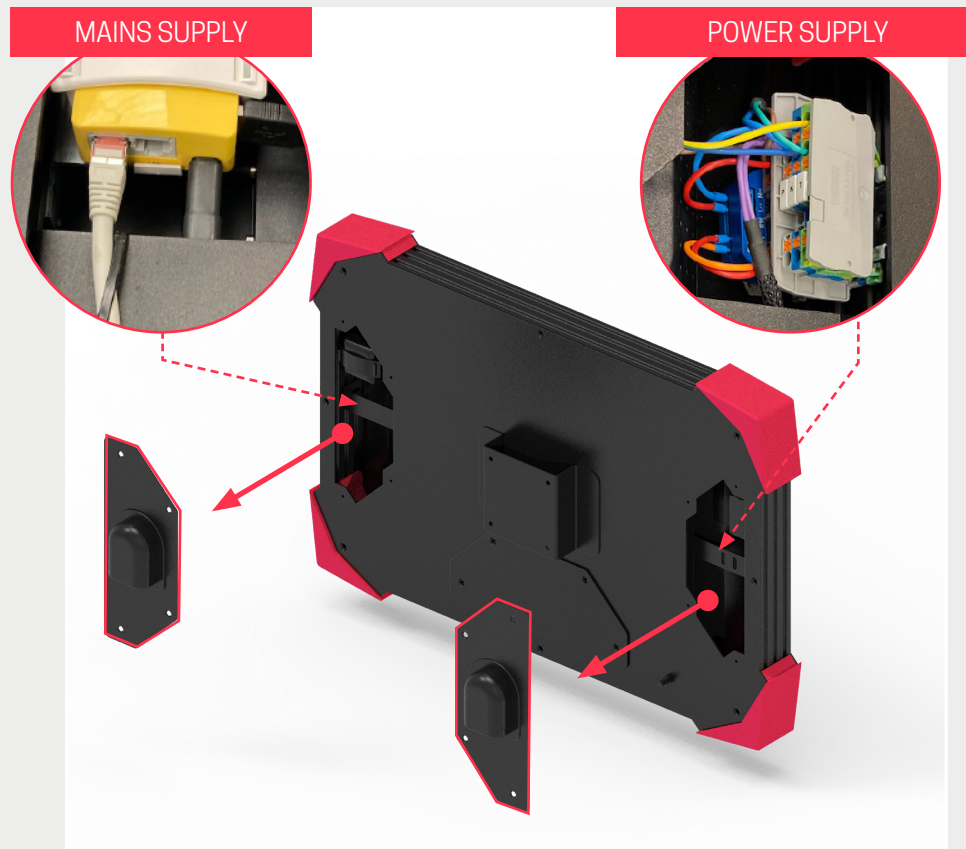
INSTALLATION INSTRUCTIONS PLAYER BOX



Mounting the screen

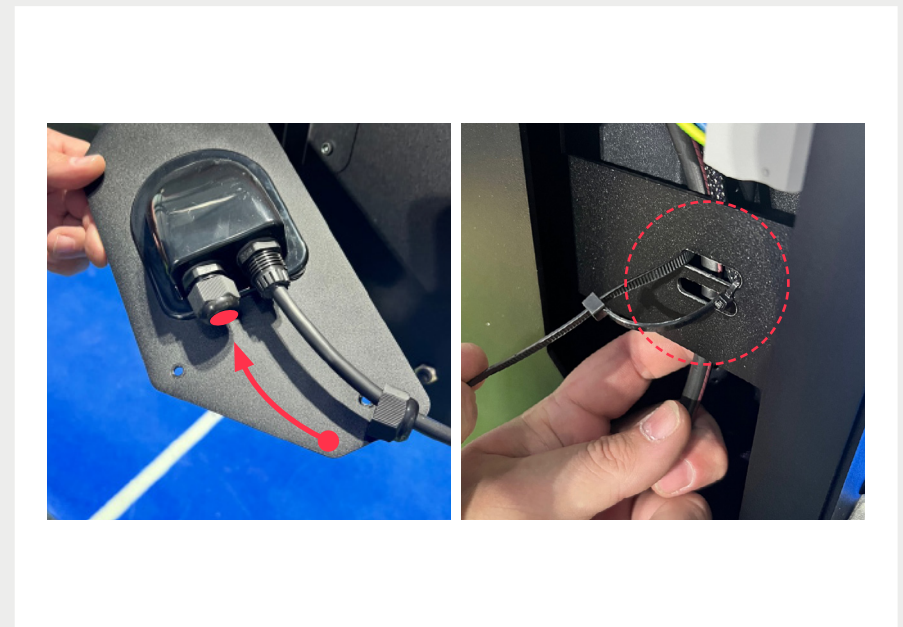
2

Remove the access covers from the PLAYER BOX



3

Pass the cables through the cable glands



- Unscrew the cable glands and route the necessary cables
- Secure the cables with cable ties in the oblongs provided.

INSTALLATION INSTRUCTIONS PLAYER BOX



Mounting the screen

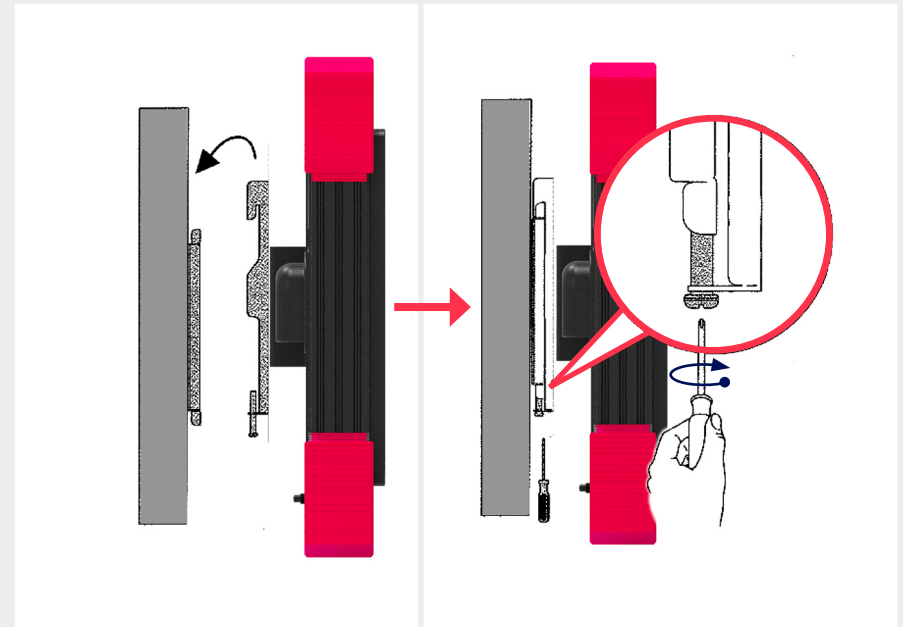
4

Remove the access covers from the PLAYER BOX



5

Install the PLAYER BOX on the VESA mount



- Attach the screen support to the rear of the PLAYER BOX
- Slide the assembly onto the wall mount and lock by tightening the locking screw

INSTALLATION INSTRUCTIONS

PLAYER BOX «PREMIUM 2 GLASS PACK»



INSTALLATION INSTRUCTIONS

PREMIUM 2 GLASS PACK



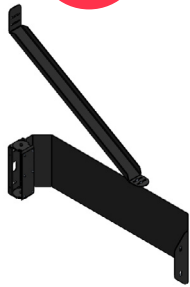
Equipment included in the box (depending on version)

x2



PLAYER BOX

x2



PREMIUM SUPPORT

x2



POWER CABLE

x2



NETWORK PATCH CABLE

x2



TACTILE FILM

x1



FILM INSTALLATION KIT
(optional)

INSTALLATION INSTRUCTIONS

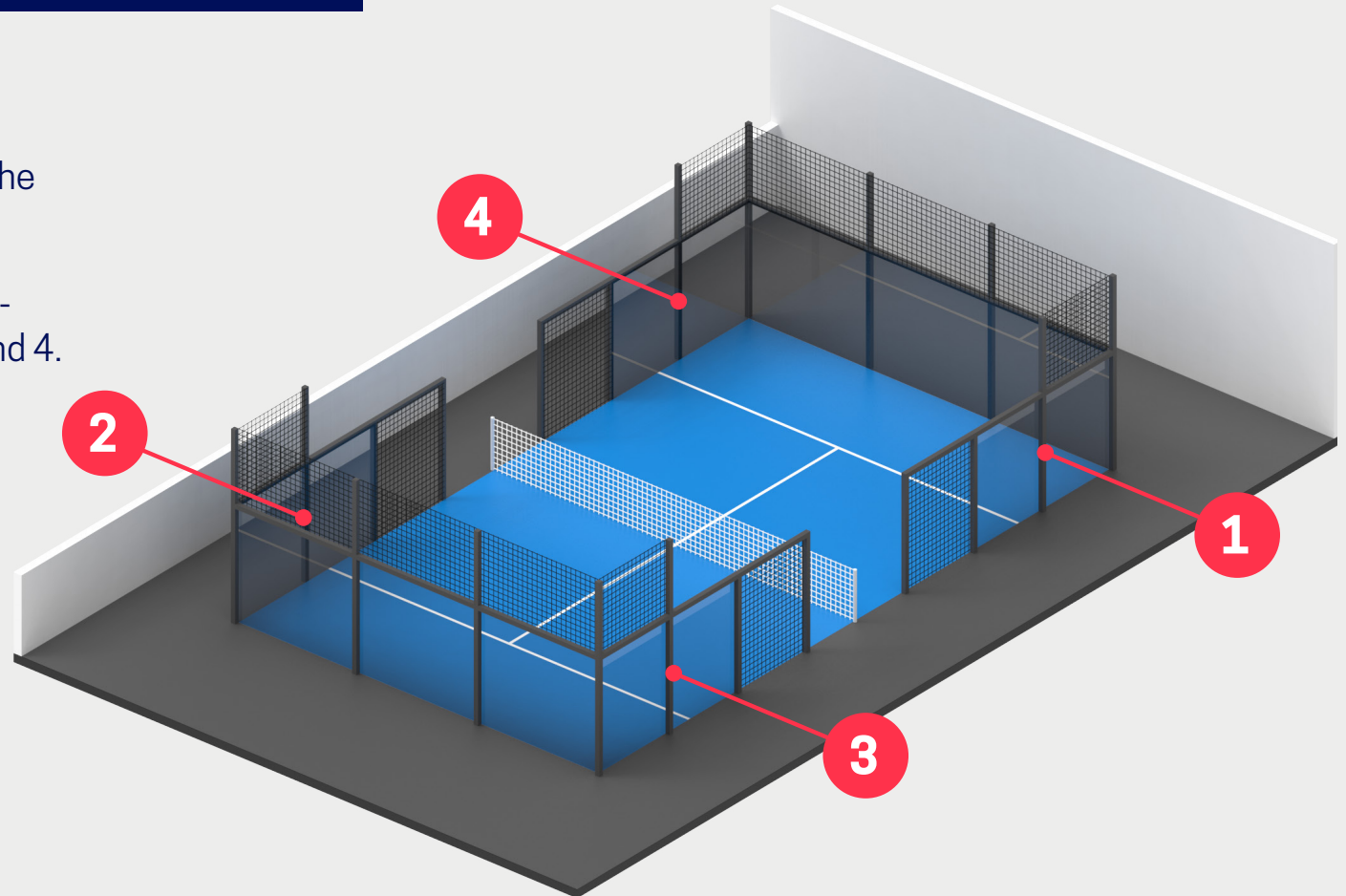
PREMIUM 2 GLASS PACK



1

Define the position of the 2 PLAYER BOXes

- We advise you to fix the screens in opposite pairs on the service line.
- Set the two screens to positions 1 and 2 or positions 3 and 4.
- Repeat the following operations twice.



INSTALLATION INSTRUCTIONS

PREMIUM 2 GLASS PACK



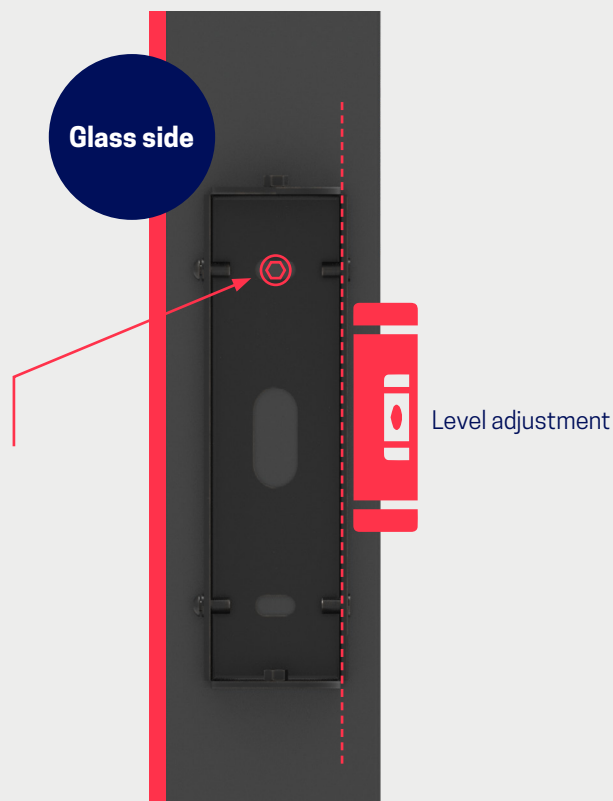
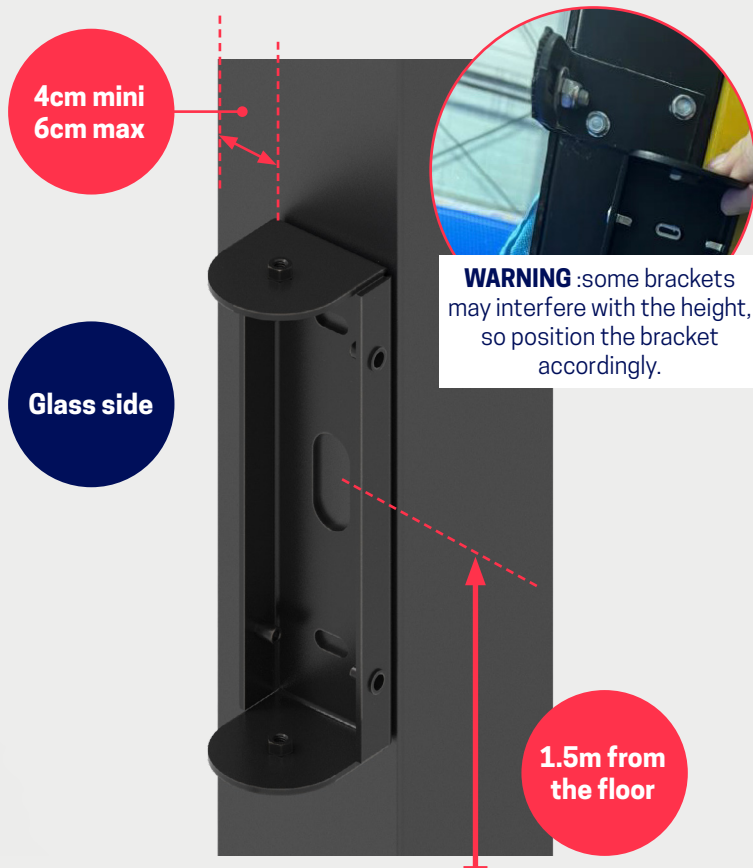
2

Fixing the pole mount

- Position the pole mount at least 4 cm / 6 cm from the glass.
- Position the vertical centre distance at a height of 1.5m.

- Fix a 1st M8 self-drilling screw without tightening fully to level and check the minimum distance of 4 cm from the glass.

- Fix a 2nd M8 self-drilling screw and fully tighten the 2 screws.



INSTALLATION INSTRUCTIONS

PREMIUM 2 GLASS PACK



3

Fixing the screen support

- Insert the 6 ball nuts as shown in the diagram.
- Slide the nut on, then press down to compress the ball spring so that the nut fits into the housing.
- Position the nuts at 90mm centres.

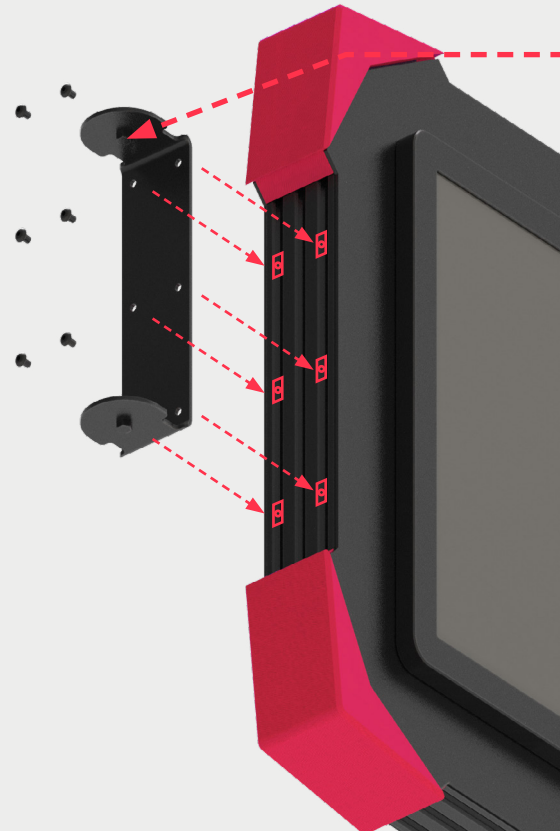


90 mm

90 mm

- Secure the screen support with the M5 screws supplied.

- Adjust the height of the support to suit the height of the screen, then tighten the screws



WARNING : Orient the bracket with the threaded rods downwards

INSTALLATION INSTRUCTIONS

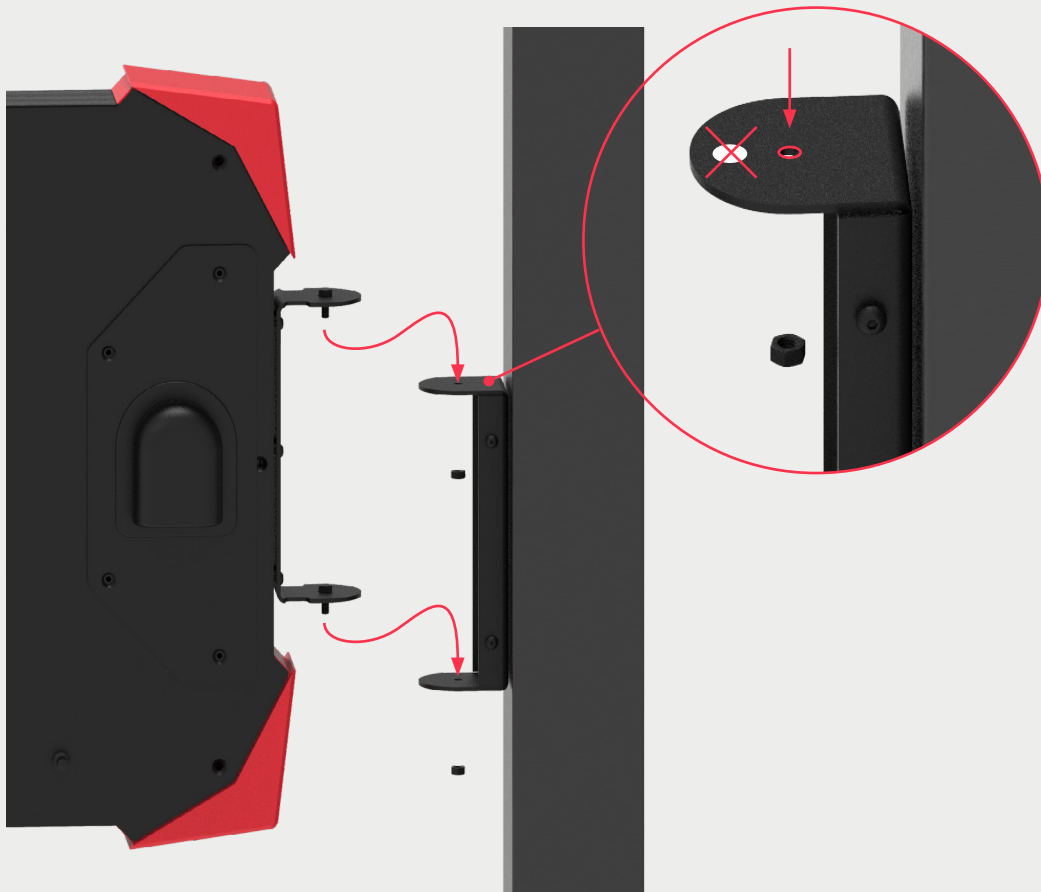
PREMIUM 2 GLASS PACK



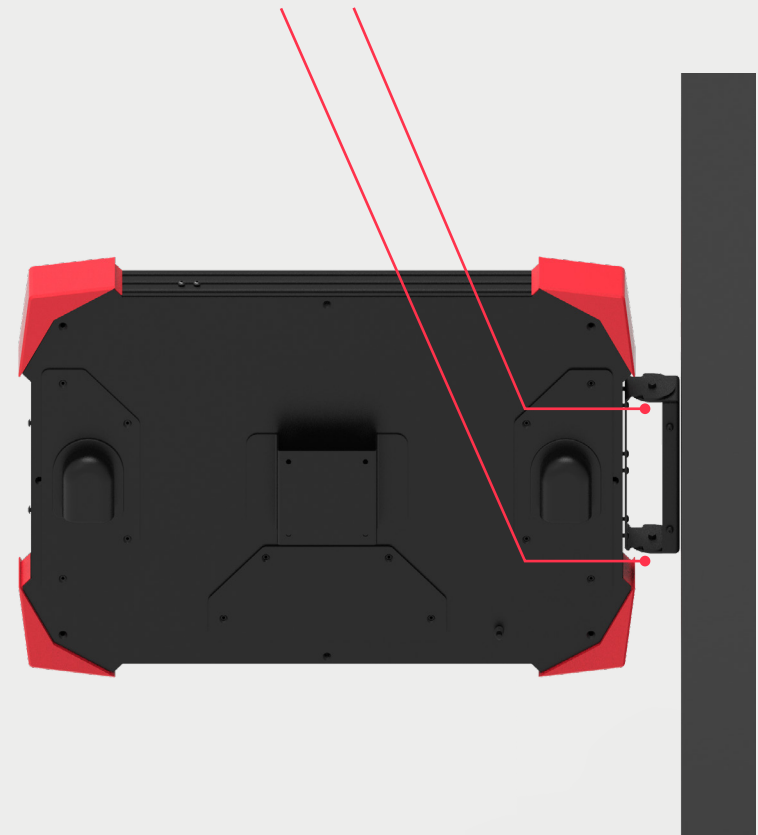
4

Assembling the screen support on the pole mount

- Position the screen on top by inserting the two threaded rods into their housings..



- Fit the washers and fully tighten the lock nuts.



INSTALLATION INSTRUCTIONS

PREMIUM 2 GLASS PACK

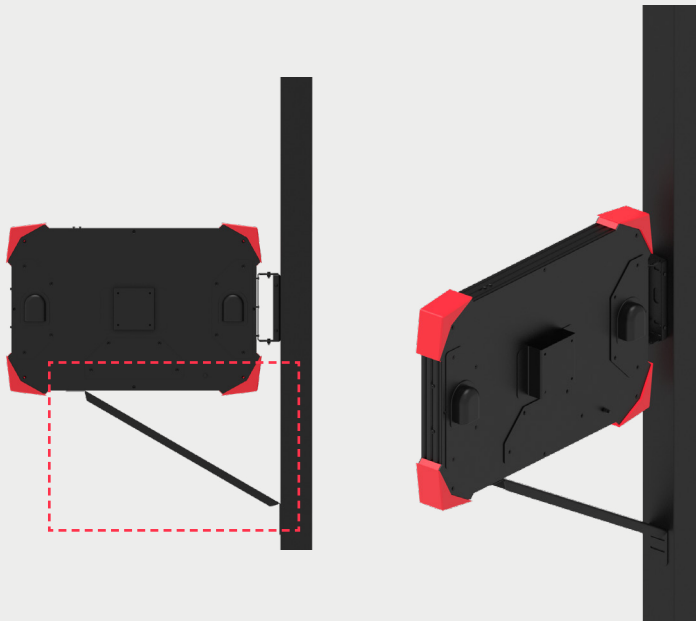


5

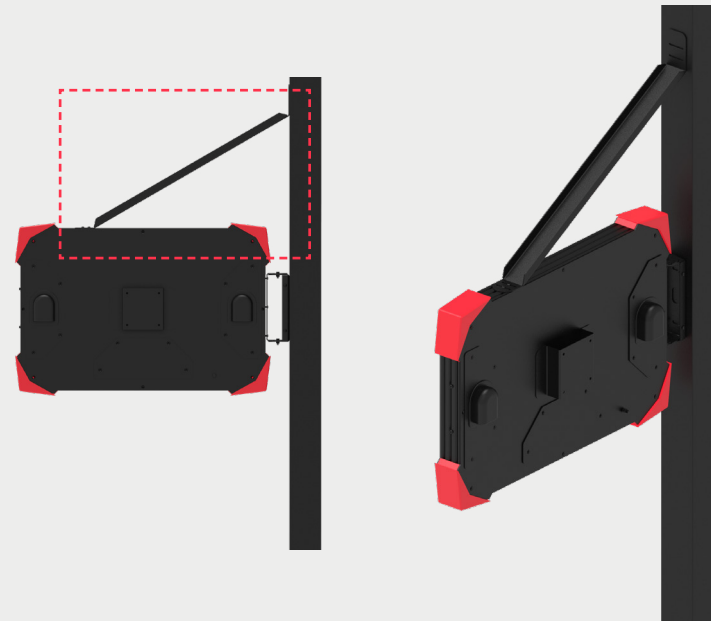
Assembling the screen support on the pole mount

- There are two possible positions depending on the stresses you may have on the pole.

LOW Position



High Position

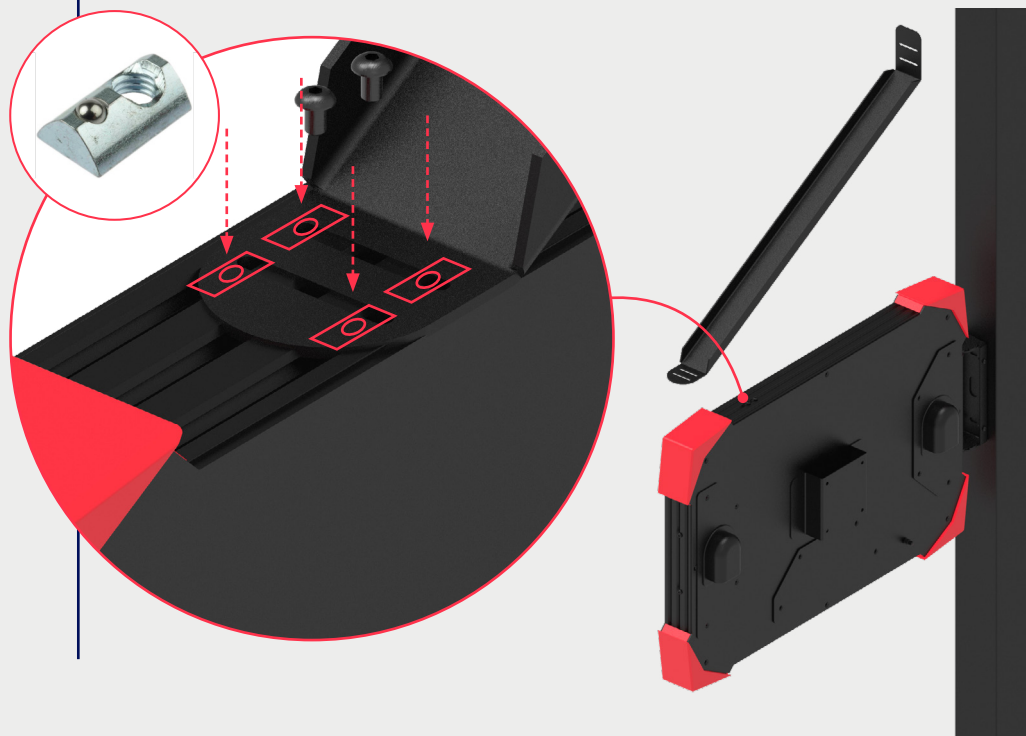


INSTALLATION INSTRUCTIONS

PREMIUM 2 GLASS PACK



- Insert the 4 ball nuts into the housings.
- Screw on the bracket without fully tightening the 4 M5 screws to adjust the level later.



- Place the bracket on the pole and screw it in place using 2 M6 self-drilling screws.
- Level the screen by lifting it slightly at the end, adjust the position of the arm on the screen and then tighten the 4 M5 screws.



INSTALLATION INSTRUCTIONS

PREMIUM 2 GLASS PACK



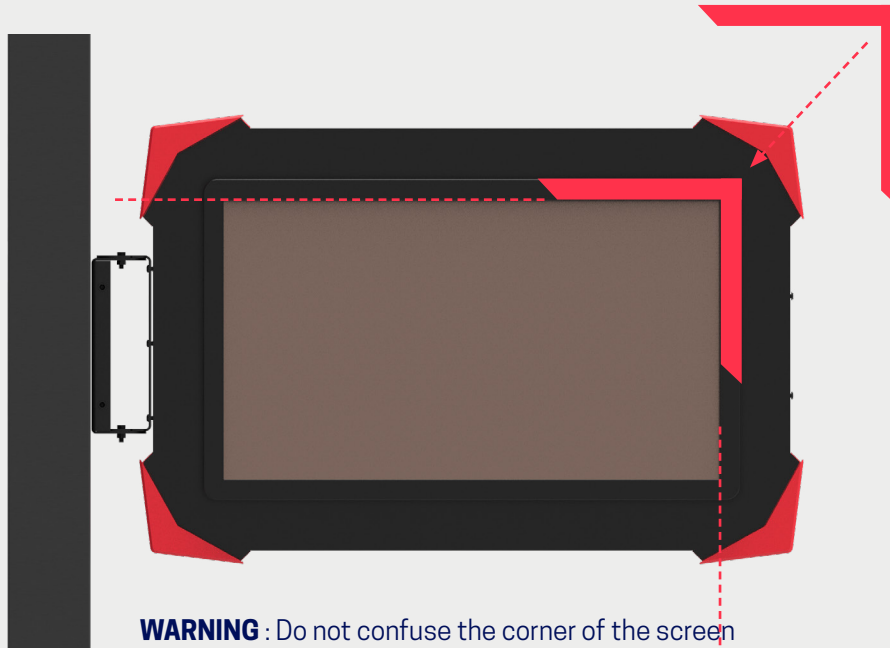
6

Laying the tactile film



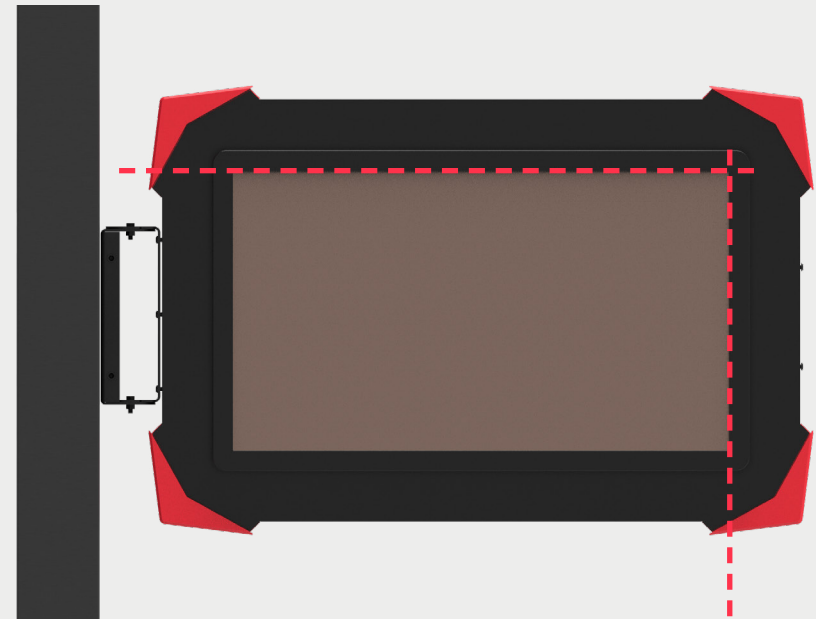
CLICK TO SEE THE INSTRUCTION VIDEO

1 - Glue the template to the glass (on the inside of the court) so that the inside corner of the template coincides with the top left corner of the screen.



WARNING : Do not confuse the corner of the screen with the corner of the screen frame.

1bis - You can also use a felt-tip pen with a level to draw two lines (in red).

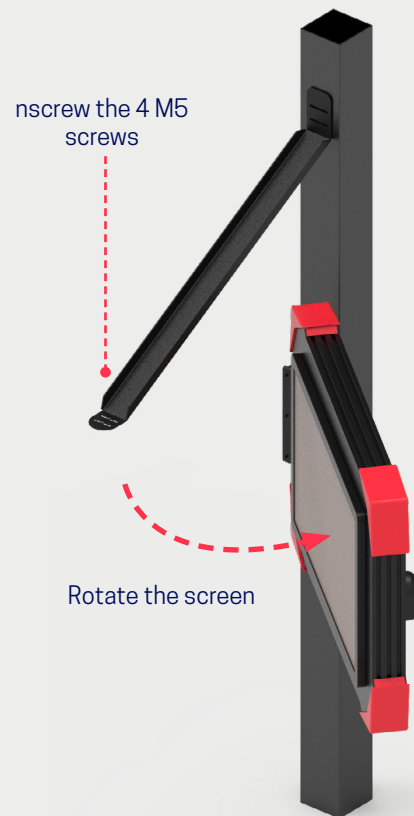


INSTALLATION INSTRUCTIONS

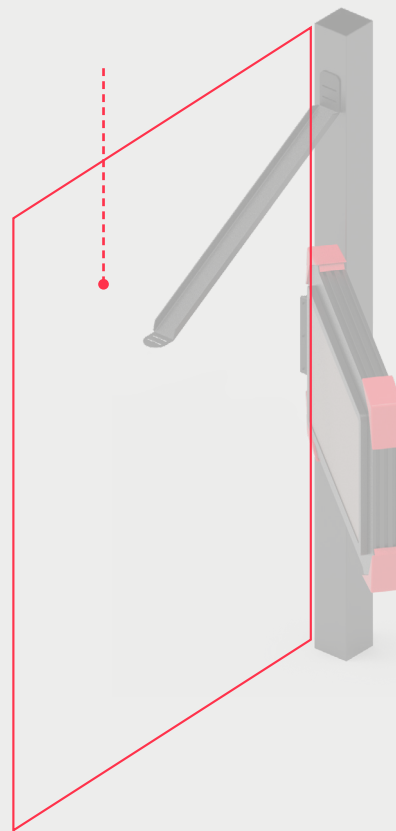
PREMIUM 2 GLASS PACK



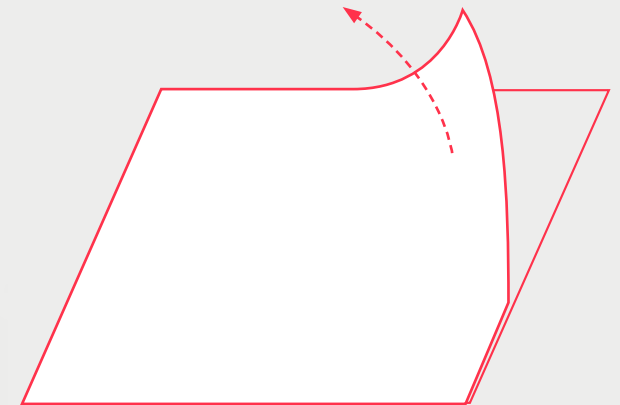
2 - Loosen the screen arm by the 4 screws and rotate the screen to work on the glass area (outside of the court).



3 - Clean/degrease the glass and remove all impurities.



4 - Remove the protective film from the **non-stick side** of the tactile film (the tactile film has two protective plastic films on each side).



INSTALLATION INSTRUCTIONS

PREMIUM 2 GLASS PACK

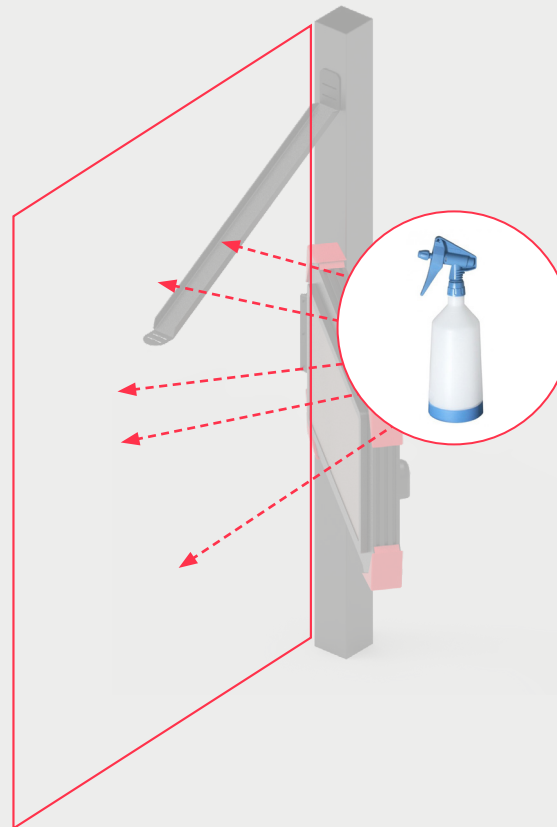


CLICK TO SEE THE INSTRUCTION VIDEO

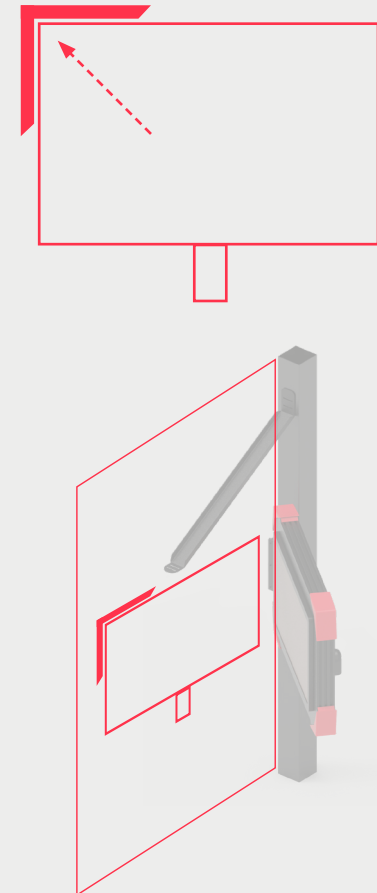
5 - Turn the film over and remove the protective film on **the sticky side** while spraying with the product so that it does not stick to your fingers.



6 - Prepare your support by applying the product generously to the glass.



7 - Position the top left corner on the origin of the template.



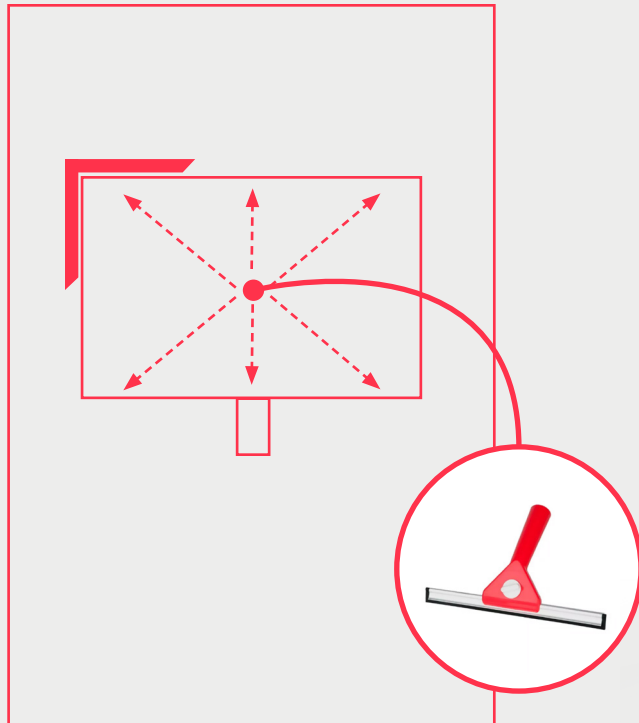
INSTALLATION INSTRUCTIONS

PREMIUM 2 GLASS PACK



8 - Using the squeegee, remove the product starting from the centre and working outwards, taking care to remove any air bubbles.

Wait 10 minutes to allow the product to dry.



9 - Fix the foam strip on the opposite side of the pole to absorb any shocks when the glass vibrates.



10 - Reposition the screen using the support arm to level the screen.



INSTALLATION INSTRUCTIONS

PREMIUM 2 GLASS PACK

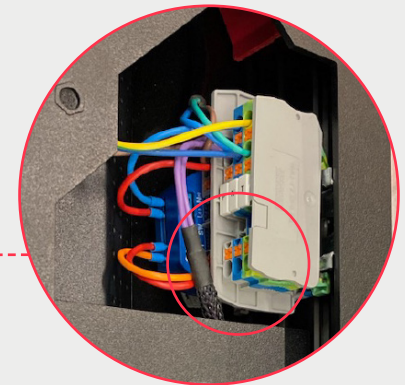


11 - Open the 3 rear hatches and make the connections..

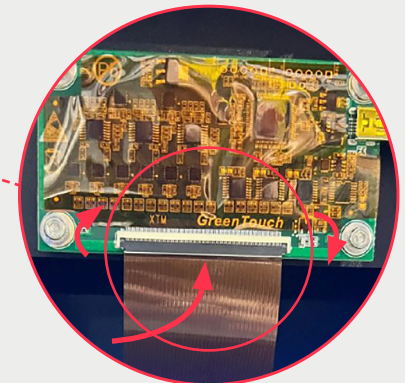
MAINS SUPPLY



POWER SUPPLY



TACTILE FILM CARD ACCESS HATCH



Pass the flat ribbon cable through the opening in the box (there is a slot in the side). Open the flap upwards and insert the flat ribbon

INSTALLATION INSTRUCTIONS

PREMIUM 2 GLASS PACK



12 - Use the cable glands to pass your cables through. Use the jumpers to clip the cables to the rear panel.

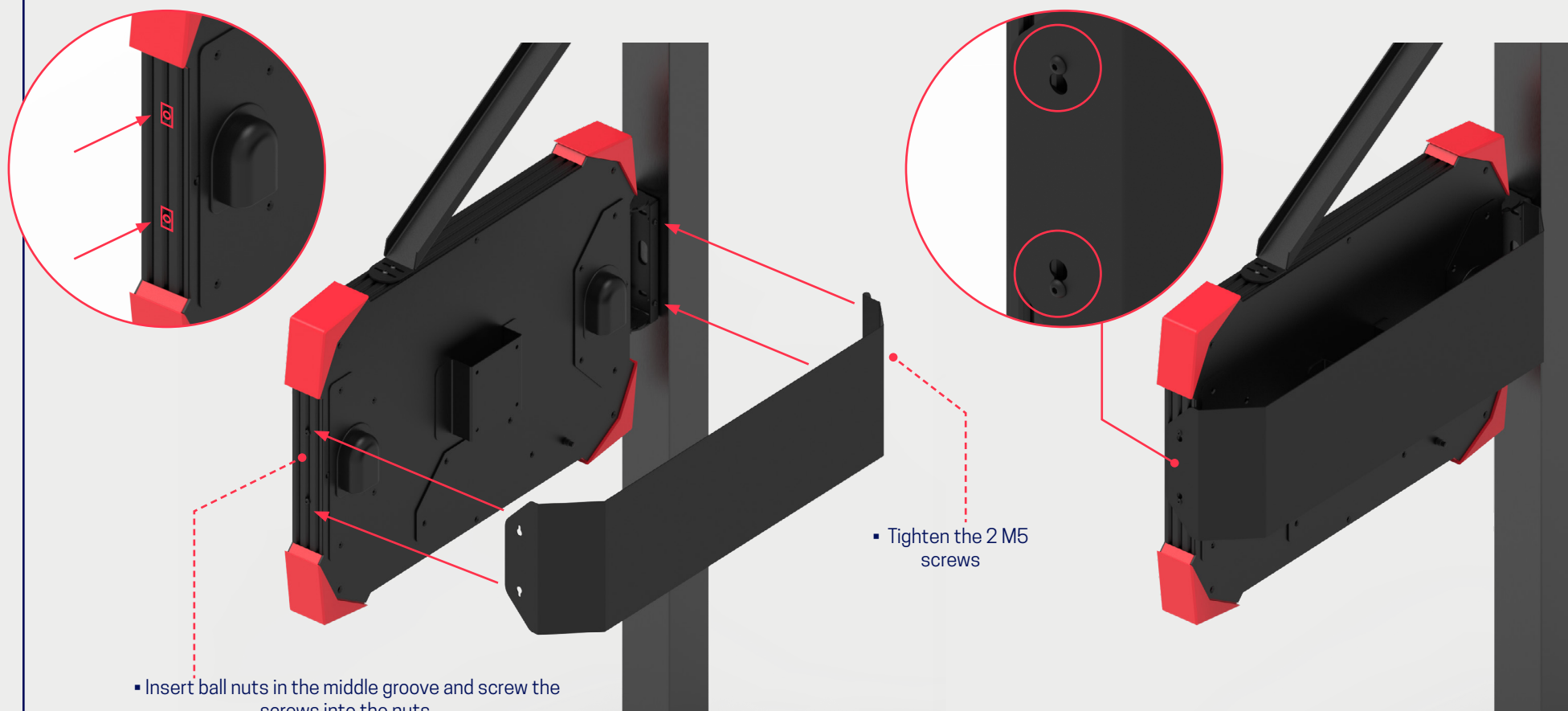


INSTALLATION INSTRUCTIONS

PREMIUM 2 GLASS PACK



13 - Secure the rear cover using the ball nuts and M5 screws supplied.



- Insert ball nuts in the middle groove and screw the screws into the nuts.
- Pass the screw heads through the keyhole slots on the side of the support and tighten.

- Tighten the 2 M5 screws

ACCESSOIRES
CAMERAS



PACKS PLAYER PACK



Equipment included in the box (depending on version)

x1



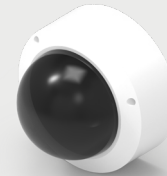
CAMERA SUPPORT ARM

x1



CAMERA L SUPPORT

x1



CAMERA

CAMERAS ACCESSOIRES

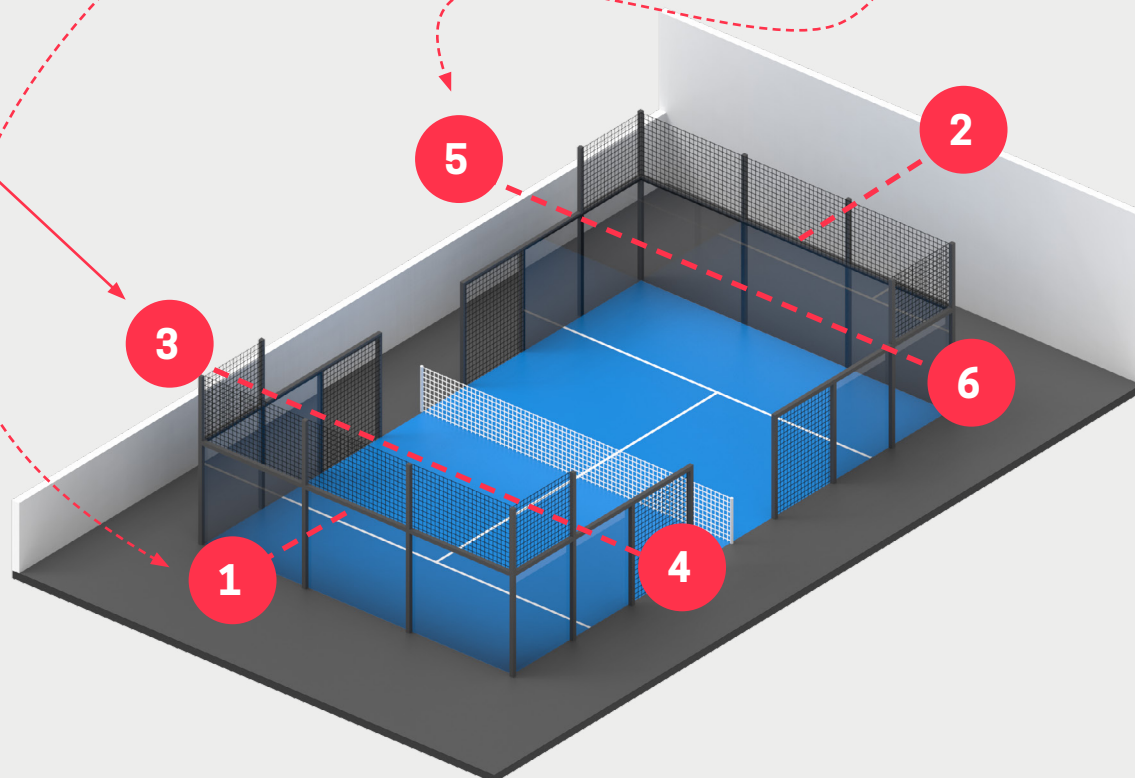


Camera mounting

- The pack consists **of 1 or more cameras**. We recommend that the central camera is positioned in line with the service tee. Use the arm or bracket.

- **If you have more than one camera**, we advise you to position the cameras in slots 3 and 4 or 5 and 6 using the brackets, so that you have an interesting view for coaching.

- Adjust the coaching cameras so that they are filming on the opposite side to get a better view angle (example: the view angle of camera 5 is shown).



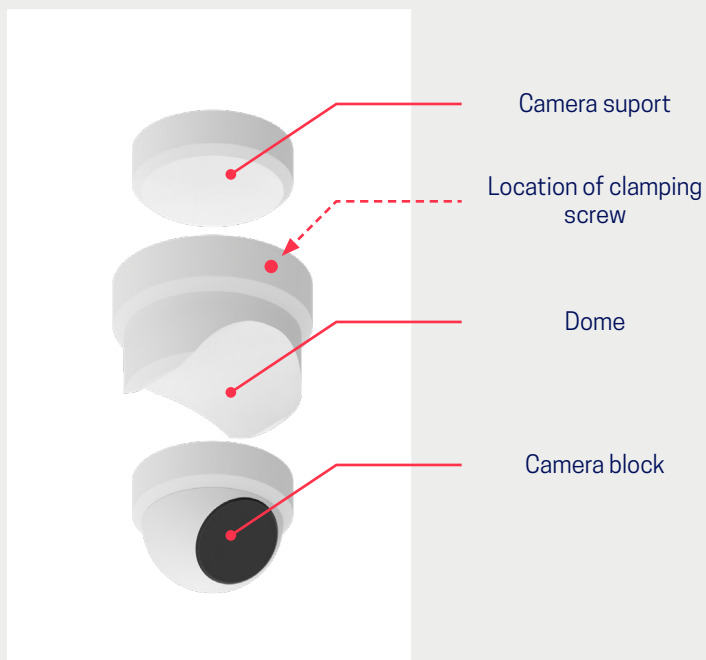
CAMERAS ACCESSOIRES



Mounting the camera (on an arm)

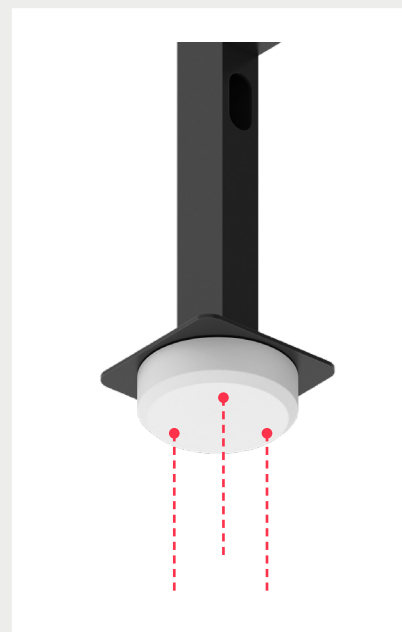
1

Unscrew the camera clamping screw and remove the camera from the support



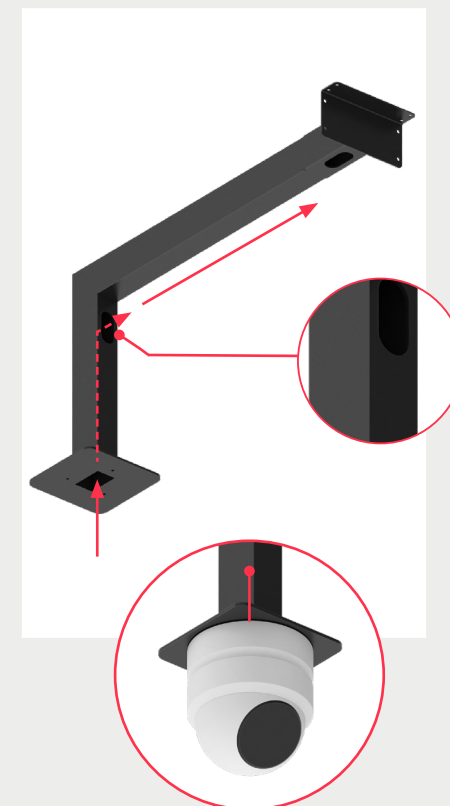
2

Attach the camera support to the arm. Fasten with the screws from bag E



3

Fit the camera unit and pass the cables through the arm



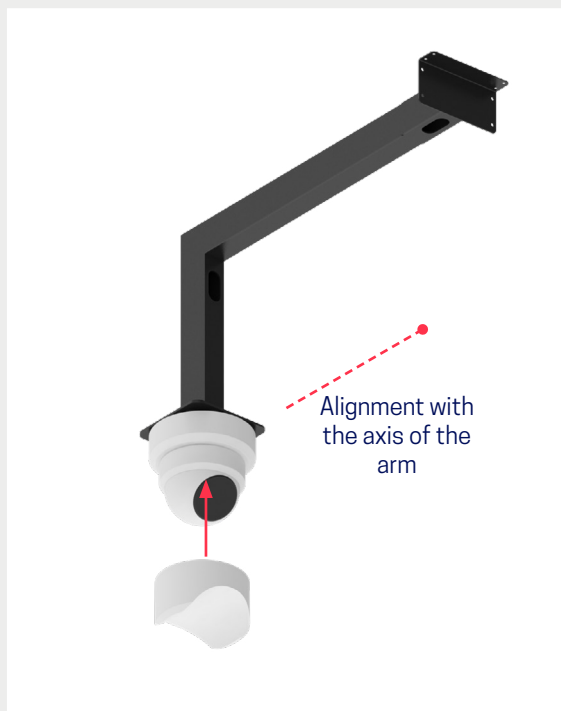
CAMERAS ACCESSOIRES



Mounting the camera (on an arm)

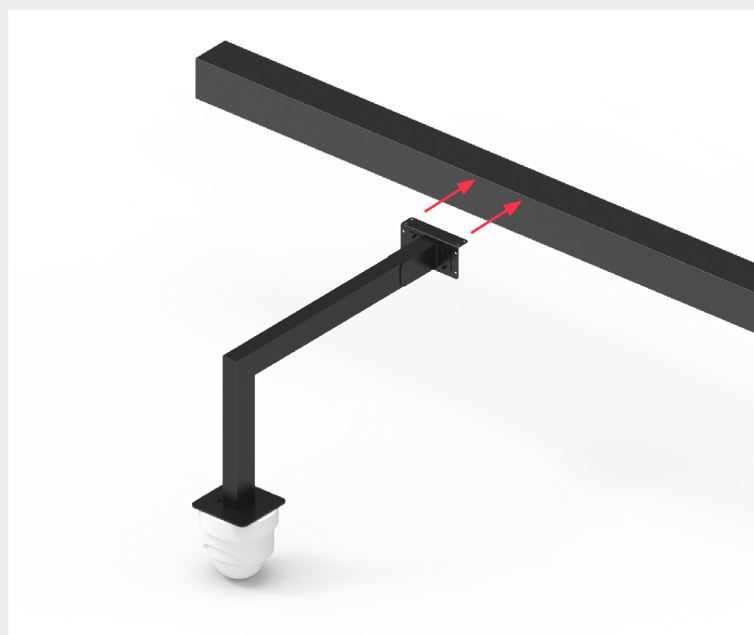
4

Refixer la coupole
Aligner la caméra dans l'axe du bras



5

Screw the arm support into the padel structure (self-drilling screws are recommended). If screws are already present, you can re-use them in the arm support.



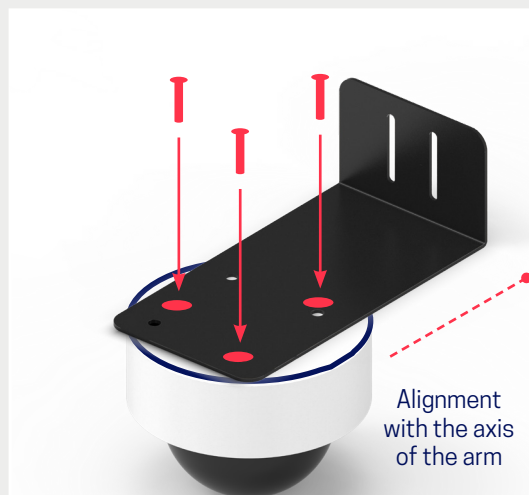
Fixing bracket on structural beam,

Can be reversed if necessary

Camera mounting (with bracket)

1

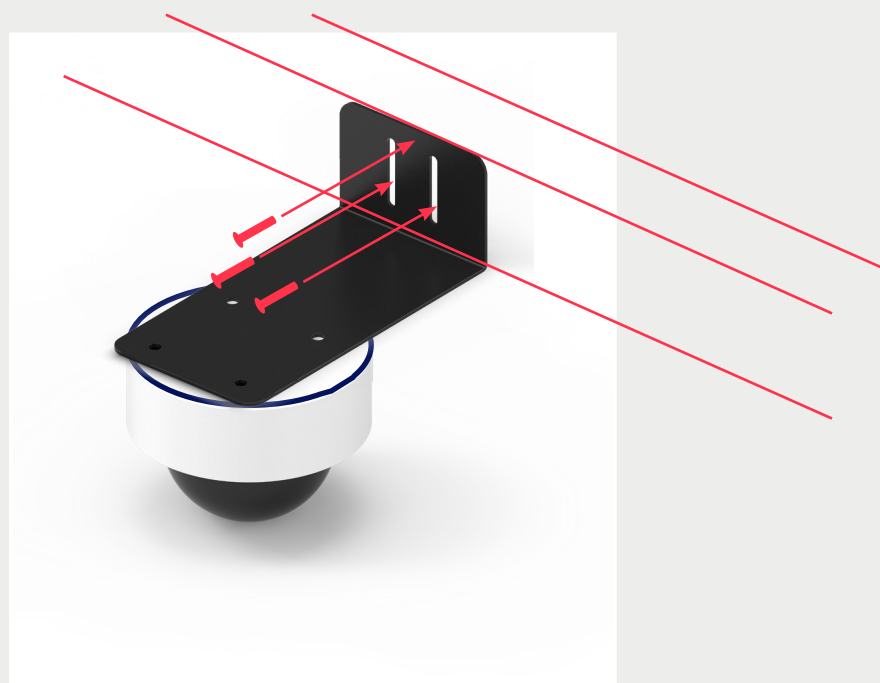
Attach the camera to the bracket (bag C+D), orienting the lens in the camera's viewing direction.



CAUTION : if you are installing the camera against a wall, reverse the

2

Screw the camera onto the padel court's structure, in line with the court's centre.

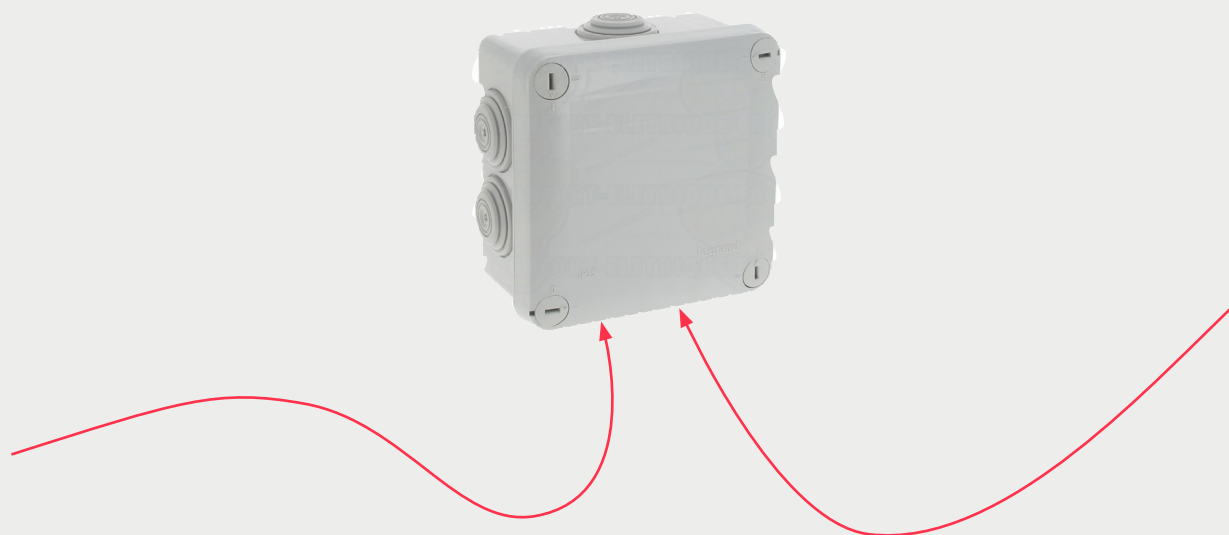


Connecting the camera

The camera is wired and has an RJ45 connector. **For outdoor installation, you will need to seal the connection using a standard PLEXO box (not supplied).**

It is advisable to make a drip loop with the cable and to make the passages through the underside of the box to avoid water infiltration.

Otherwise, refer to the camera manual.



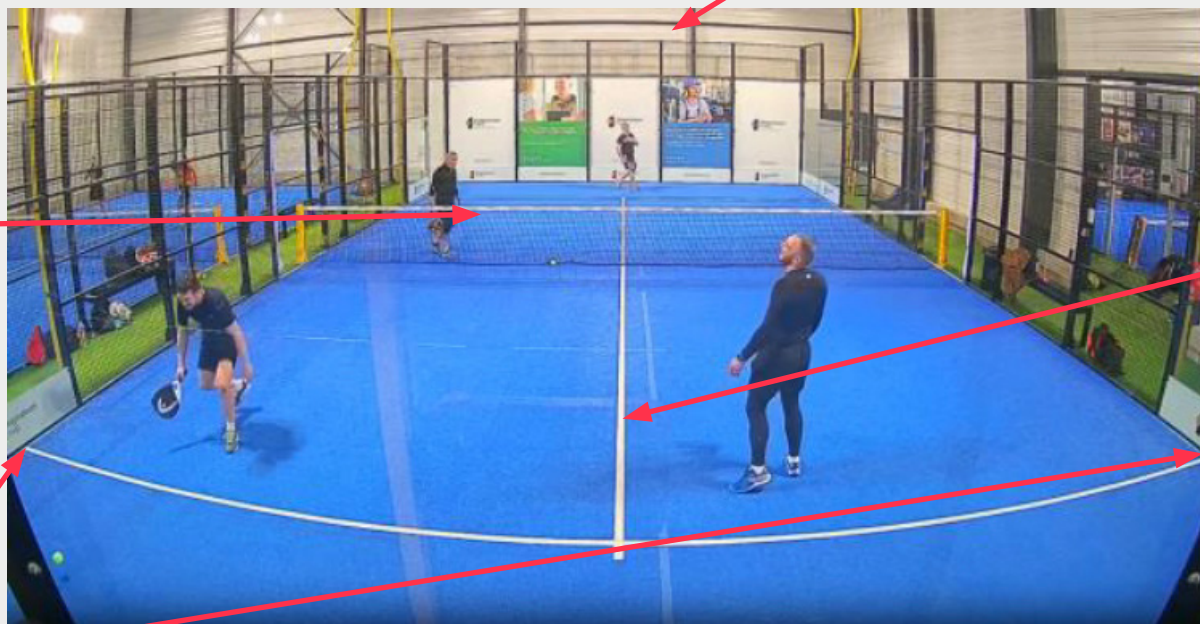
CAMERAS ACCESSOIRES



Adjusting the camera angle

Adjust the base so that the net is horizontal Place the centre line.

Adjust the angle a little above the grid.



in the middle of the image, trying to be as vertical as possible.

Centre the lens so that it is the same distance left and right 55.

ACCESSOIRES

BUZZERS



ACCESSOIRES BUZZERS



Fixing the buzzers

1

Fix the buttons behind the grid at the service line using the self-drilling screws supplied

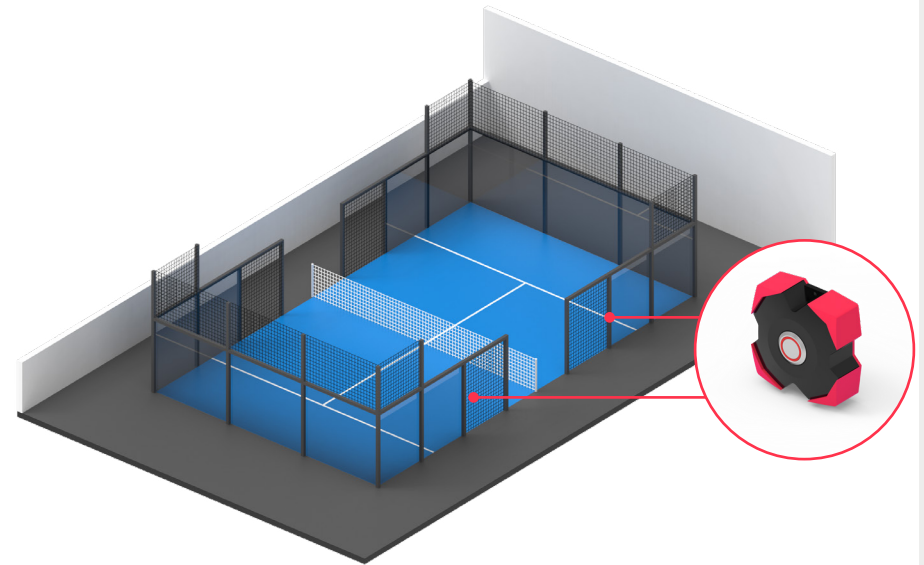


Old version

- Use the fixing holes provided.
- Buzzers can be fixed to poles using clamps.

2

The position of the button can be changed as required



NB: the buzzer works with the wifi propagated by the player box.

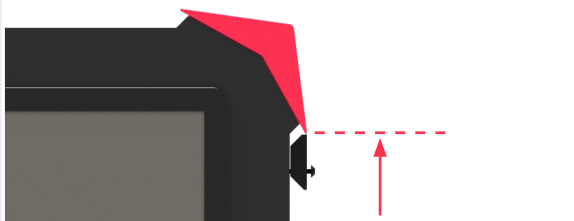
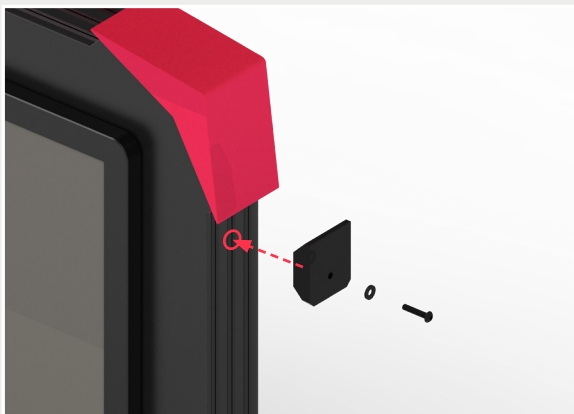
ACCESSOIRES
CAP



Fixing the PLAYER BOX cap

1

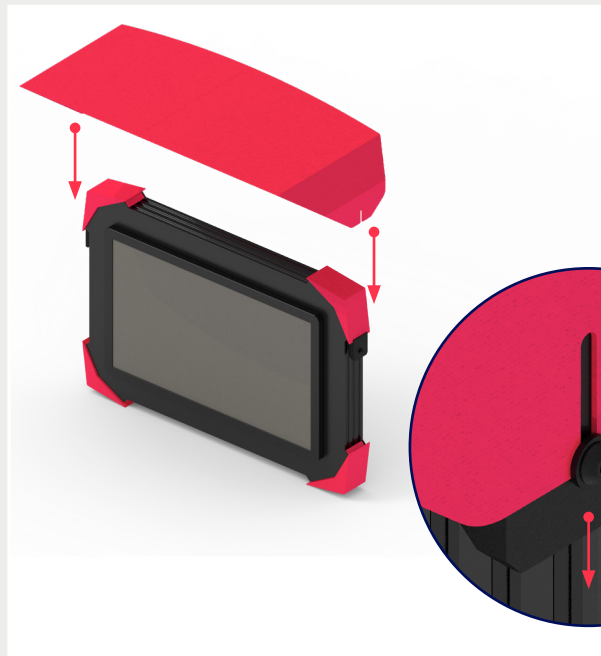
Screw the spacers on both sides



- Do not screw all the way in, leave a gap of +/-5 mm.
- The spacers must be fixed against the pink angles.

2

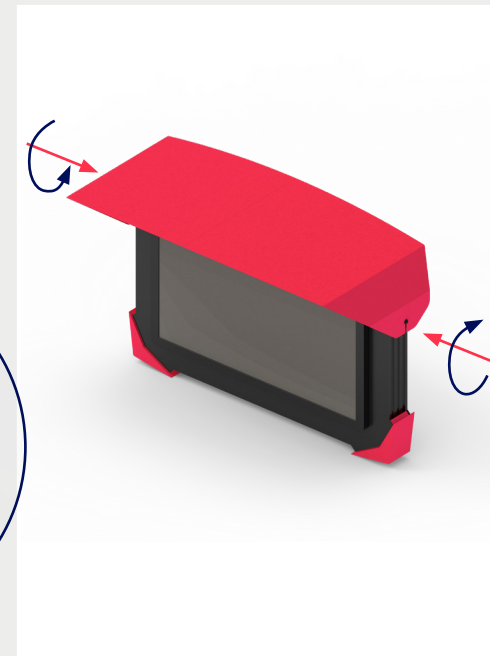
The button's position can be changed to suit your requirements



- Fit the cap by sliding the slots through the screws in the spacers.

2

The button's position can be changed to suit your requirements



- Fit the cap by sliding the slots through the screws in the spacers.

ACCESSOIRES

WIFI AP



ACCESSOIRES WIFI AP



If you do not have a PLAYER BOX in your package and you wish to use SPASH buzzers, you will need a SPASH wifi accessory. The equipment will be added to your order.

Position the equipment as close as possible to the equipped SPASH courts.

Use a Recorder BOX or Switch BOX to power the equipment via POE.



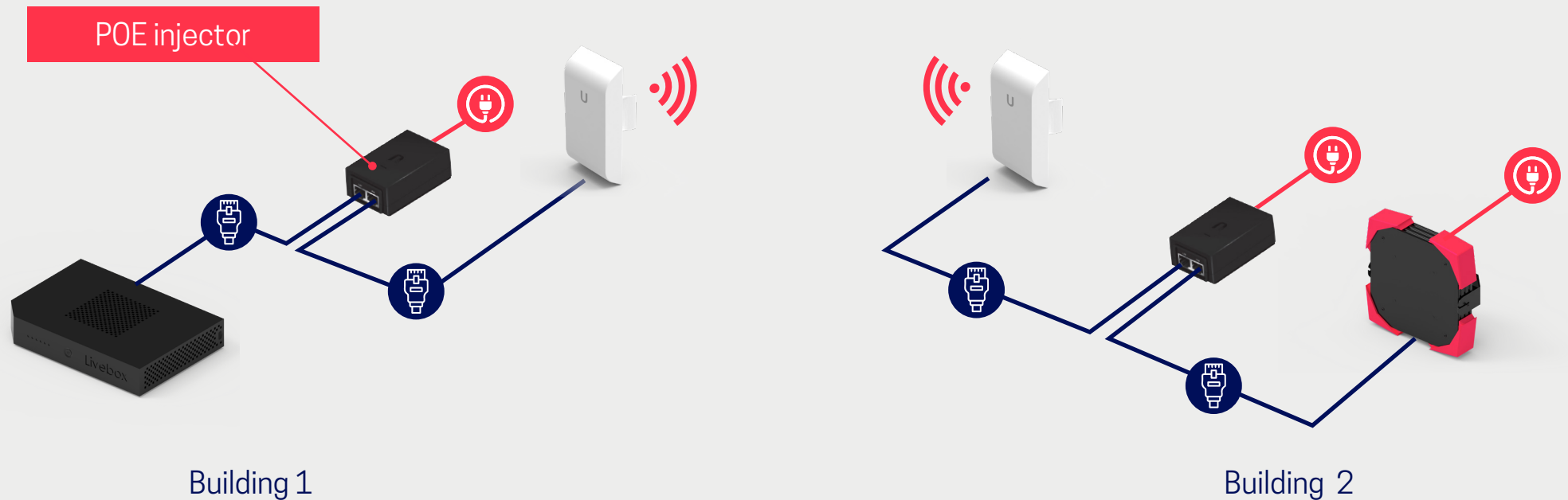
ACCESSOIRES
BRIGDE




ACCESSOIRES BRIDGE



If your pitches are not in the same building as your internet access, rather than installing a taut cable or digging a trench, we recommend that you install a wifi bridge between the two buildings to link them together. The equipment works according to the principle below.



 Ethernet network cable (cat 6a min)

 Requires an electrical socket

POST MATCHES

Post Match TV



Equipment included

x1



MINI PC

x1



WIRELESS MOUSE

x1



NETWORK PATCH CABLE

x1



HDMI CABLE

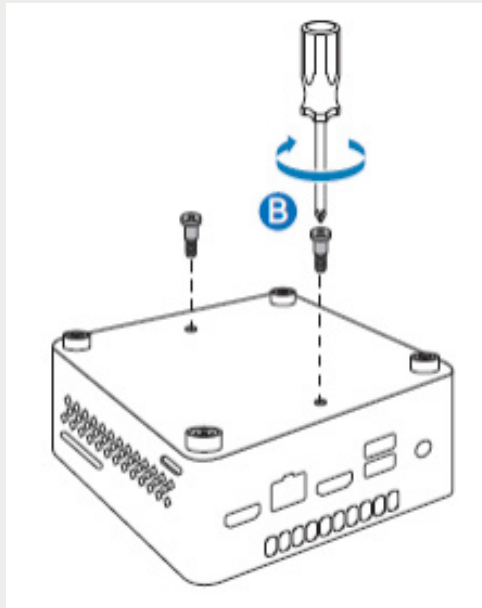
POSTS MATCHES Post Match TV



Mini PC mounting

1

Install the 2 screws on the PC chassis



2

Mount the bracket on the wall

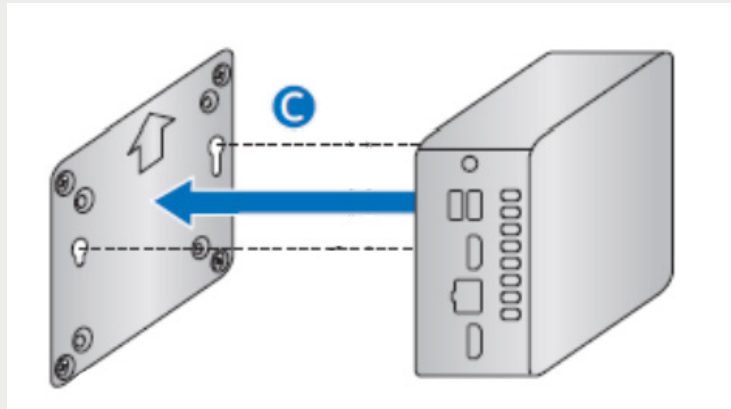


- Align the bracket with the arrow pointing upwards, then secure the bracket using 4 screws.

Mini PC mounting

3

Attach the mini PC to the bracket



- Slide the two screws into the keyhole slots, then lower the assembly to lock the mini PC in place

4

Connect the cables

- Connect the network cable
- Connect the HDMI cable between the mini PC and the TV
- Connect the USB dongle for the wireless mouse
- Connect the power cable to the mini PC When the mini PC is powered up, it should start up automatically and open the configured page.

POST MATCHES

Tactile Post-Match



POST MATCHES Tactile Post Match



Equipment included

x1



PLAYER BOX

x1



TV WALL MOUNT

x1



NETWORK PATCH CABLE

x1



POWER CABLE

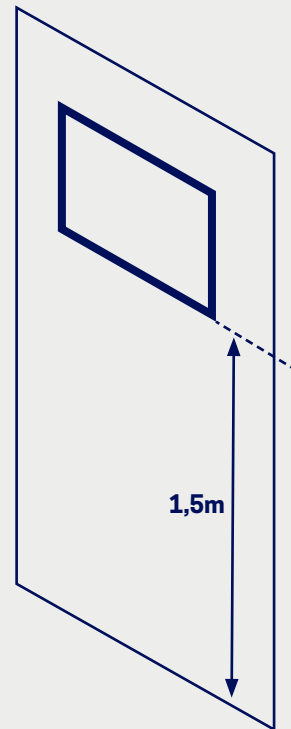
POST MATCHES Tactile Post Match



Mounting the screen

1

Install the supplied VESA TV bracket at a height of 1.5m



▪ For assembly: refer to the instructions in the packaging.

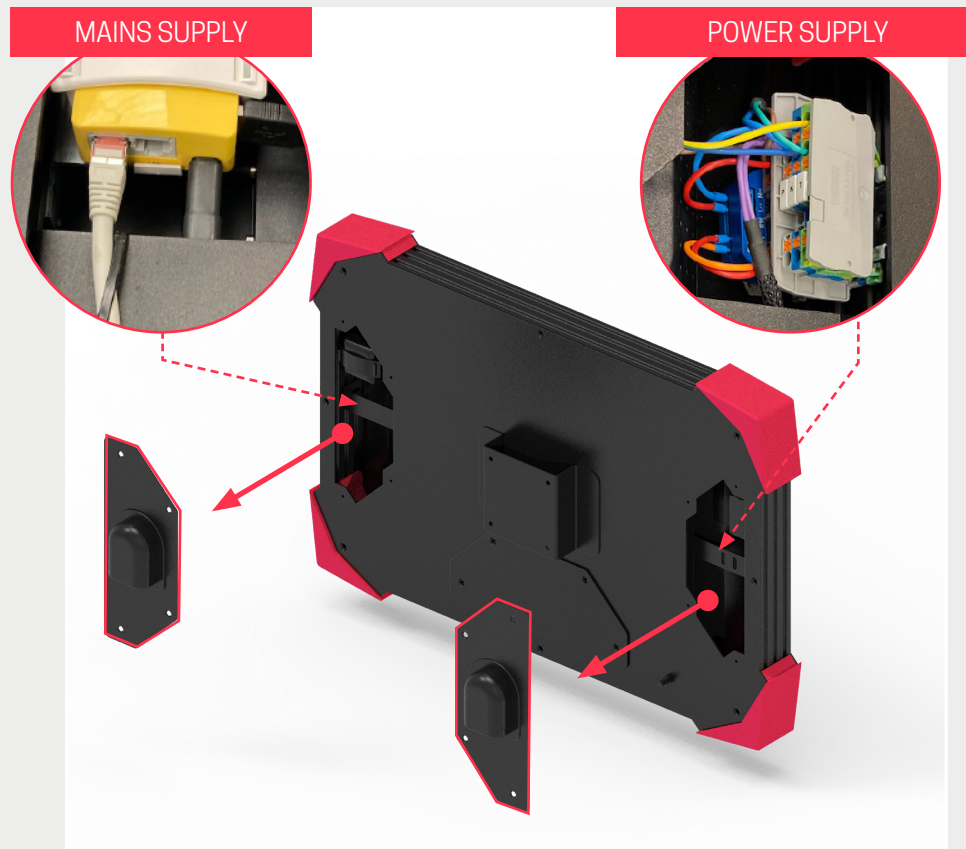
POST MATCHES Tactile Post Match



Mounting the screen

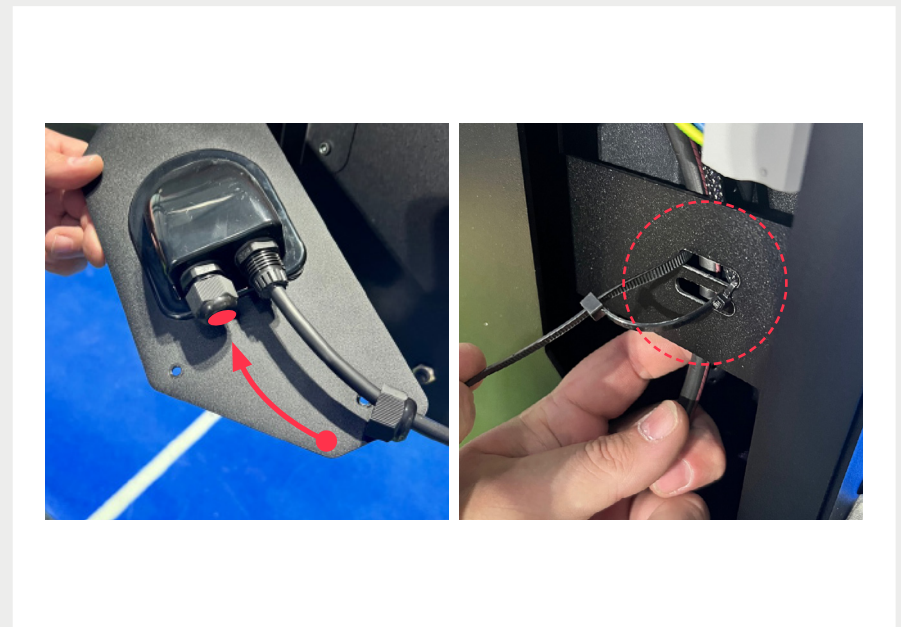
2

Remove the access covers from the PLAYER BOX



3

Pass the cables through the cable glands



- Unscrew the cable glands and route the necessary cables.
- Secure the cables with cable ties in the oblongs provided.

POST MATCHES Tactile Post Match



Mounting the screen

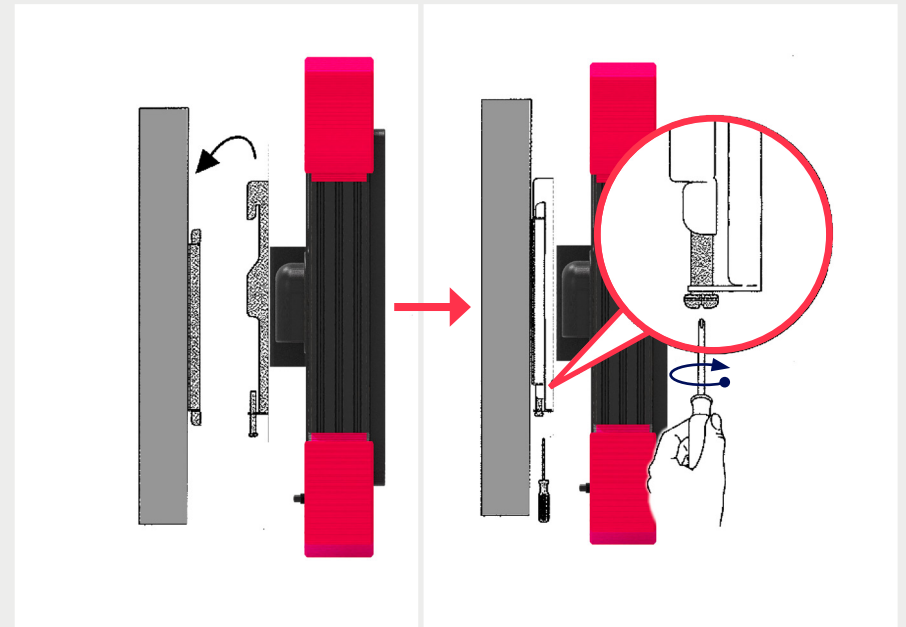
4

Remove the access covers from the PLAYER BOX



5

Install the PLAYER BOX on the VESA mount



- Attach the screen support to the rear of the PLAYER BOX.
- Slide the assembly onto the wall mount and lock by tightening the locking screw.

SPASH TV



Equipment included

x1



SPASH TV

x1



TV WALL MOUNT

x1



NETWORK PATCH CABLE

x1

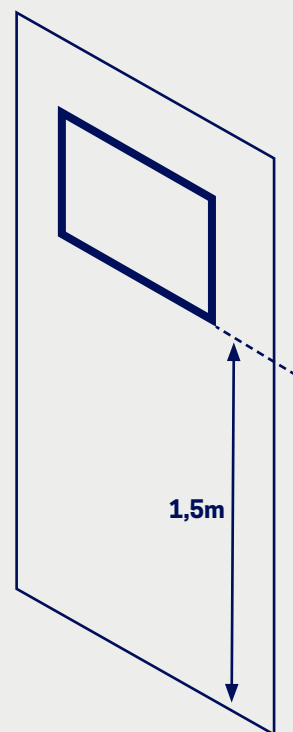
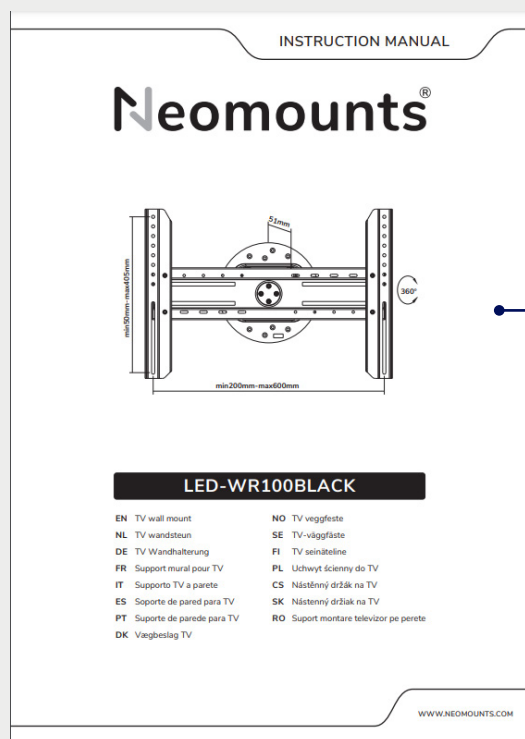


POWER CABLE

Mounting the screen

1

Install the supplied VESA TV bracket at a height of 1.5m

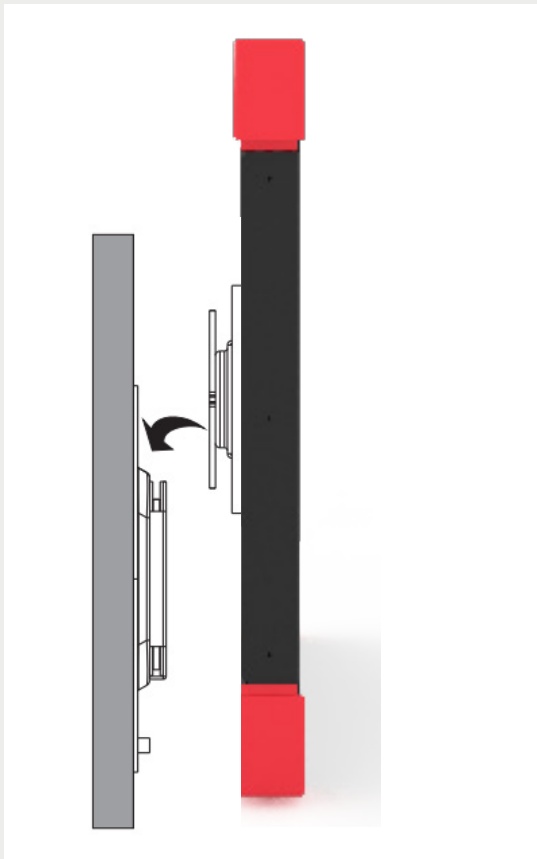


- For assembly: refer to the instructions in the packaging.

Mounting the screen

2

Position the screen in its stand



3

Connect the cables



- Connect the power cable and the network cable
SPASH TV turns on automatically when the power is on and the application is loaded directly.

COMMISSIONNING

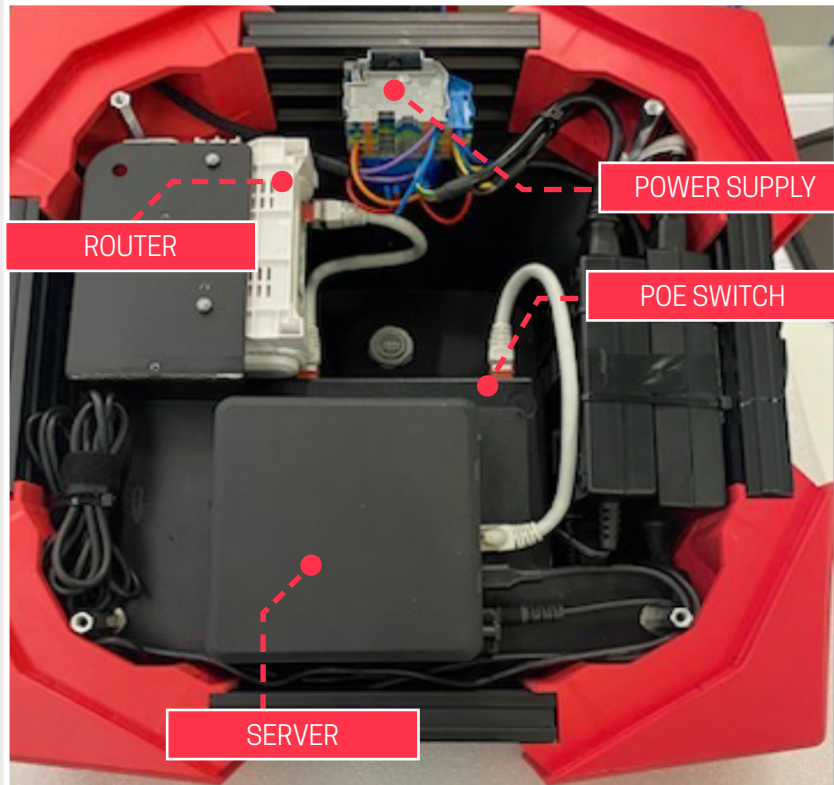
CHECKING THE SYSTEM



COMMISSIONNING

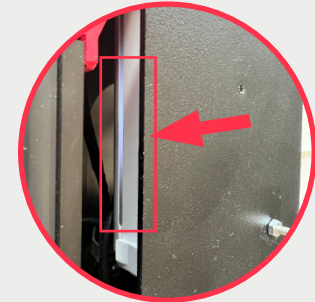


Checking the RECORDER BOX



1

The light must be white and remain on continuously
The cable from your internet box must be on the WAN port



2

The switch LED must be lit



3

The server LED must be lit



4

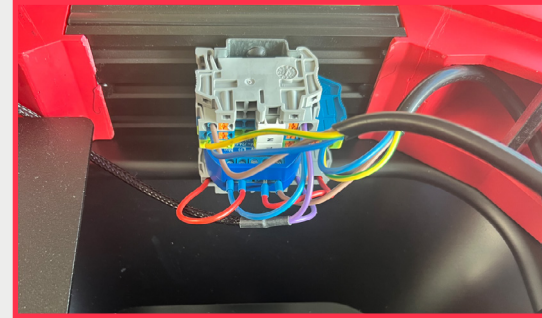
The wifi with the name SPASH_XXX must be visible on your smartphone

COMMISSIONNING



Checking the Switch Box

- 1 Connect the switch box to the mains
- 2 Check that the switch is working
- 3 Check that the LEDs are flashing for each port connected



COMMISSIONNING



Checking the Switch Box

- 1 Connect the Player Box to the mains



- 2 When you connect the mains, the screen lights up and the software starts up.



If you see a blank page, this means that the screen is not connected to the Recorder box.

COMMISSIONNING



Checking the Player Box

- 3 Start a session
- 4 The session will start up. If it does not, check that the cameras are properly connected.



Click on the instant replay tab



Use the live view to adjust the camera angle 81

Checking buzzers

- 1 Launch a session
- 2 Once the session has been started, if you press the buzzer, the screen should display:



System check

- Internet access must be available
- The RECORDER BOX must be switched on
- The switch box, if present, must be switched on
- The player box must be switched on
- Camera(s) must be connected to the recorder box or switch box

You can call the SPASH hotline on **+33 4 81 69 47 33**
to control the system