



CONTENTS



★ Overview	3
★ Prerequisites	9
★ Specification sheets	11
★ Packs :	
	Starter Pack 16
	Coach Pack 18
	Coach Plus Pack 20
★ Installation instructions :	
	Recorder Box / Switch Box 22
	Player Box 28
★ Accessories :	
	Camera 33
	Buzzer 40
	Cap (optional) 42
	Wifi AP (optional) 44
	Bridge (optional) 46
★ Posts Matches	48
★ SPASH TV	57
★ Commissioning	61

OVERVIEW



GOOD TO KNOW



We strongly recommend that you hire a professional with the necessary qualifications to install electrical and network equipment.

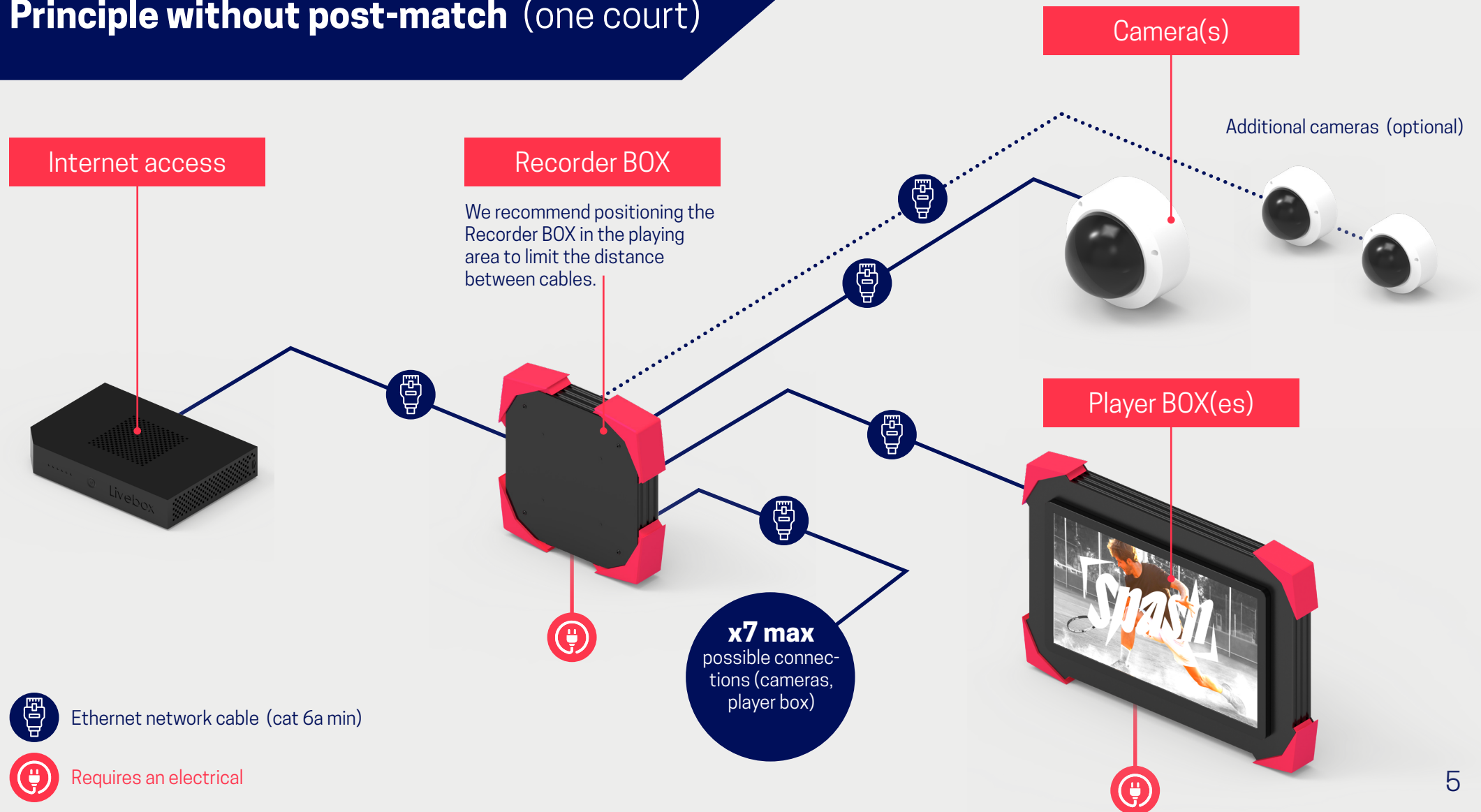
Inspect the packages to check that no equipment is missing or damaged. If this is not the case, call technical support on **+33 4 81 69 47 33**.

SPASH equipment operates on a local subnetwork broadcast by the Recorder BOX. Any equipment outside this network will not work.

OVERVIEW



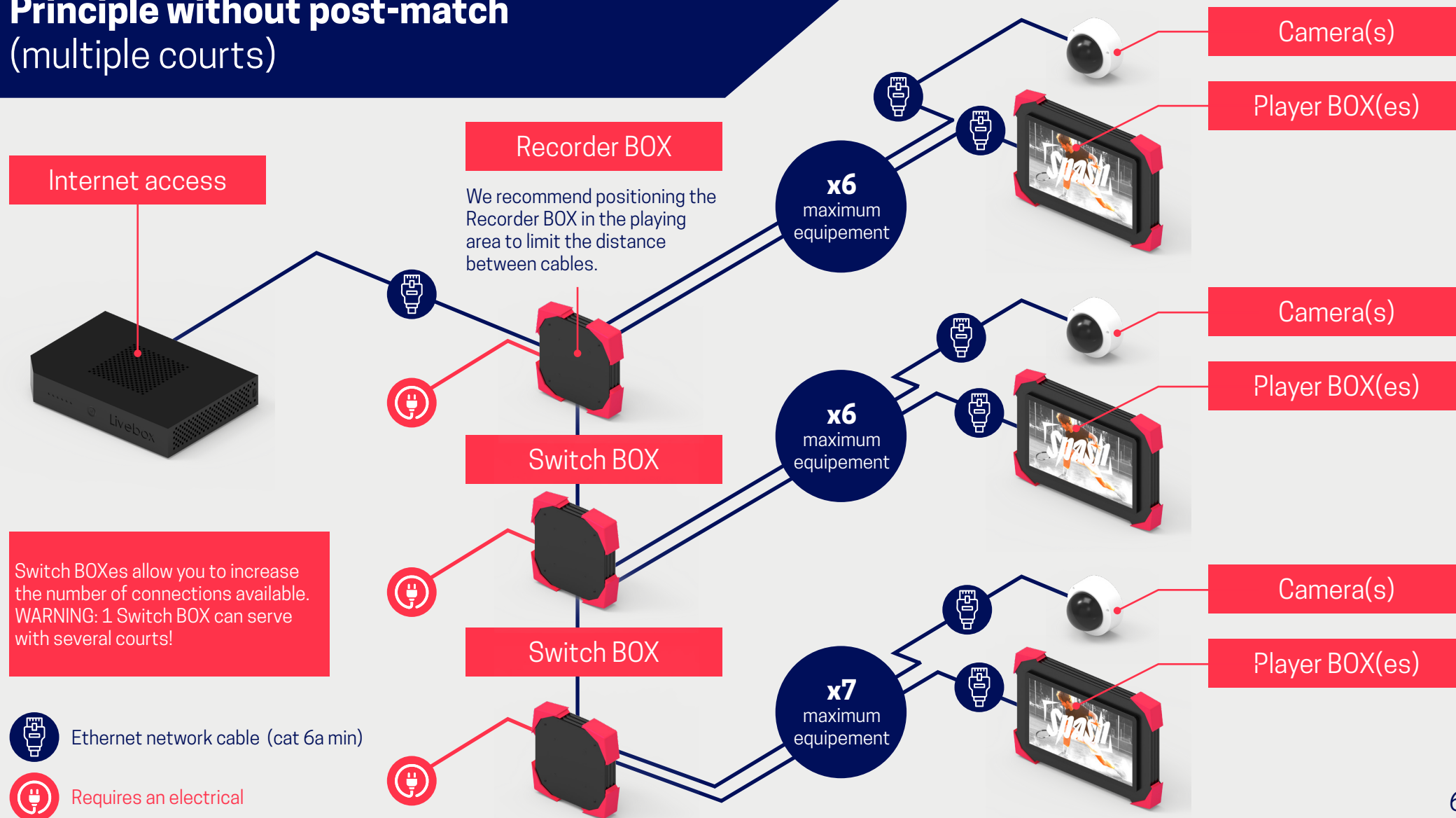
Principle without post-match (one court)



OVERVIEW



Principle without post-match (multiple courts)



Principle with post match

Clubhouse area / Bar



Playing area / Fields



Ethernet network cable (cat 6a min)



Requires an electrical socket

Principle with launch terminal

Recorder BOX

We recommend positioning the Recorder BOX in the playing area to limit the distance between cables.

Wifi AP

It enables the buzzer to operate


Camera(s)

Additional cameras (optional)

Player BOX(es) Launch terminal

Allows you to control several courts at the same time

 Ethernet network cable (cat 6a min)

 Requires an electrical socket

Internet access



PREREQUISITES



PREREQUISITES



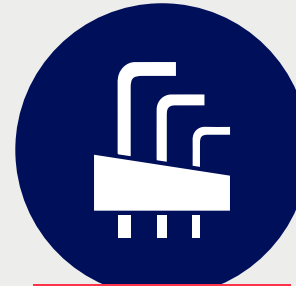
Equipment required for installation



DRILL



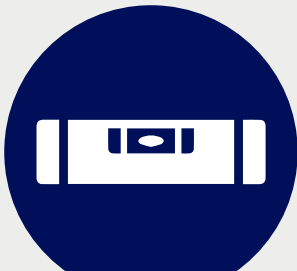
ELECTRIC



ALLEN KEYS



SCREWDRIVER



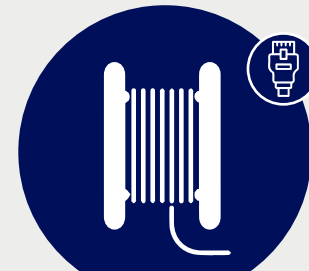
SPIRIT LEVEL



SCREWS AND PLUGS



ELECTRIC CABLE



NETWORK CABLE

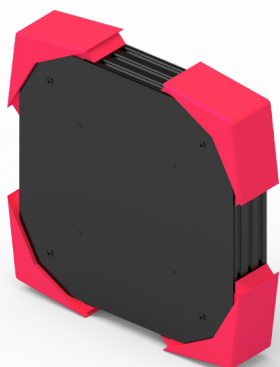
SPECIFICATION SHEET



SPECIFICATION SHEET



Recorder BOX



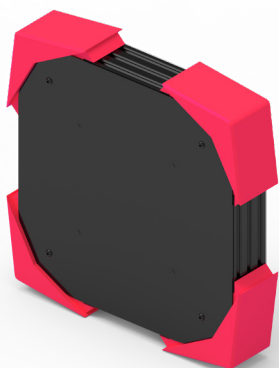
BOX RECORDER

Interface	
Ethernet interface	1 WAN Port 10/100/1000 Mbps
Wifi interface	2.4 Ghz - 5 Ghz, 300 Mbps (2.4Ghz), 867 Mbps (5Ghz)
Switch interface	8 Ports POE LAN 10/100/1000 Mbps, 30W / port, 62W Total
Reset	Hardware button
General	
Power	Connections via terminals 110-240V 50-60Hz Power consumption <55W, max 110W
Dimensions	373.4 x 373.4 x 161 mm
Weight	8.2 Kgs
Environmental conditions	
Working temperature	0°C - 50°C
Humidity level	10% - 80 %
Storage temperature	-5°C - 60 °C
Storage humidity	0% - 70%
Altitude	Below 5000m
Certifications	
Protection	IP54
Standards	CE, FCC, ROHS

SPECIFICATION SHEET



Switch BOX



SWITCH BOX

Interface	
Switch interface	8 Ports POE LAN 10/100/1000 Mbps, 30W / port, 62W Total
Reset	Hardware button
General	
Power	Connections via terminals 110-240V 50-60Hz Power consumption <30W, max 62W
Dimensions	373.4 x 373.4 x 161 mm
Weight	6.2 Kgs
Environmental conditions	
Working temperature	0°C - 50°C
Humidity level	10% - 80 %
Storage temperature	-5°C - 60 °C
Storage humidity	0% - 70%
Altitude	Below 5000m
Certifications	
Protection	IP54
Standards	CE, FCC, ROHS

SPECIFICATION SHEET



Player BOX



PLAYER BOX

Interface	
Ethernet interface	1 LAN Port 100/100 Mbps
Wifi interface	2.4Ghz, 300Mbps
Audio	8 ohms 5W
Reset	Hardware button
General	
Power	Connections via terminals 110-240V 50-60Hz Power consumption 45W
Dimensions	802.4 x 541.9 x 125 mm
Weight	23 Kgs
Environmental conditions	
Working temperature	0°C - 50°C
Humidity level	10% - 80 %
Storage temperature	-5°C - 60 °C
Storage humidity	0% - 70%
Altitude	Below 5000m
Certifications	
Protection	IP54
Standards	CE, FCC, ROHS

SPECIFICATION SHEET



SPASH TV



SPASH TV

Interface	
Ethernet interface	1 LAN Port 100/100 Mbps
Wifi interface	2.4Ghz, 300Mbps
Audio	8 ohms 5W
Reset	Hardware button
General	
Power	Connections via terminals 110-240V 50-60Hz Power consumption 45W
Dimensions	1315 x 844 x 75 mm
Weight	35 kgs
Environmental conditions	
Working temperature	0°C - 50°C
Humidity level	10% - 80 %
Storage temperature	-5°C - 60 °C
Storage humidity	0% - 70%
Altitude	Below 5000m
Certifications	
Protection	IP54
Standards	CE,FCC,ROHS

PACKS

STARTER PACK



PACKS STARTER PACK

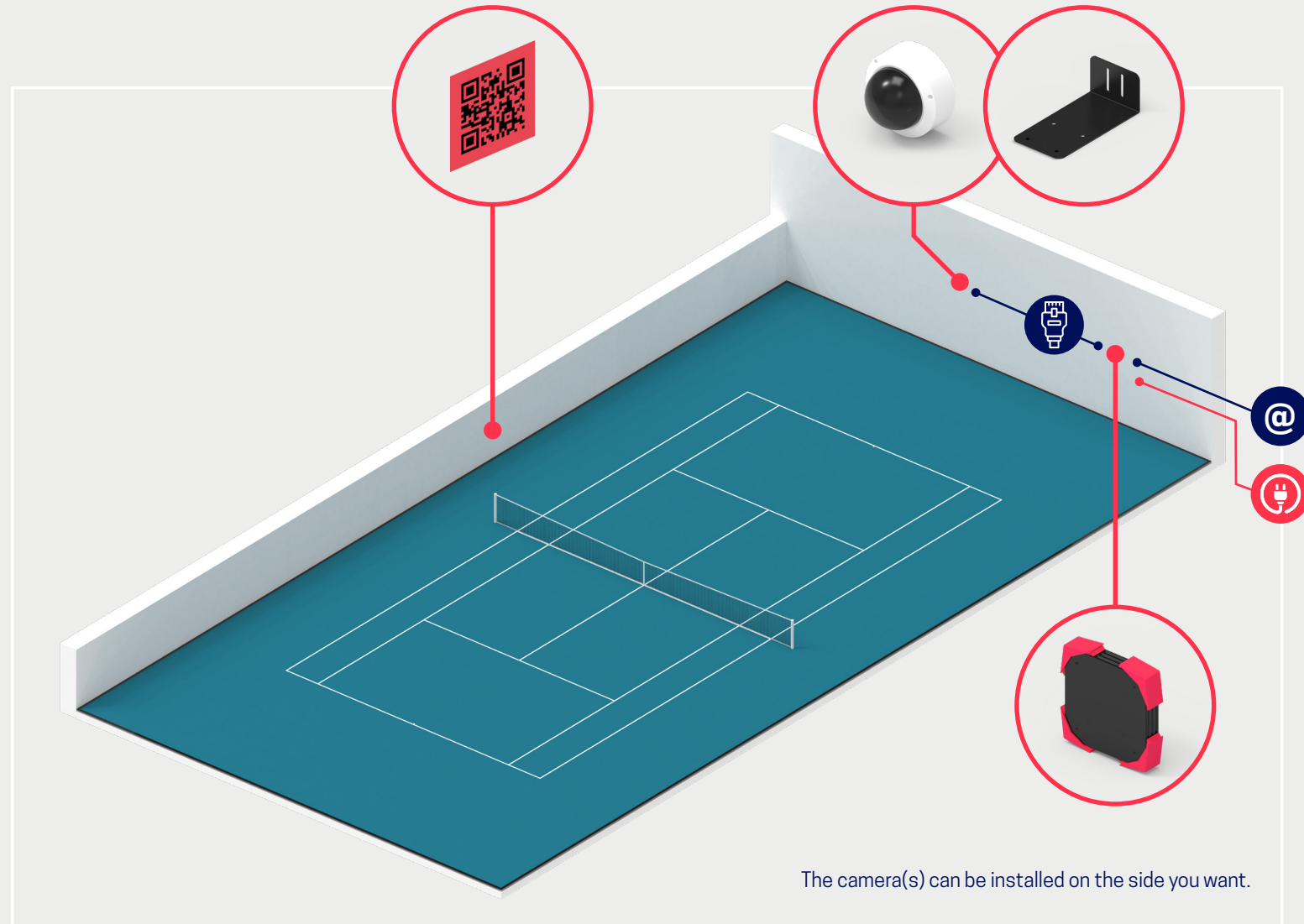


STARTER PACK equipment :

- x1 **RECORDER BOX**
- x1 **PTZ camera**
- x1 **camera support (L type)**
- x1 **QR code holder**

Options :

- Buzzers
- Additional cameras



PACKS

COACH PACK



PACKS COACH PACK

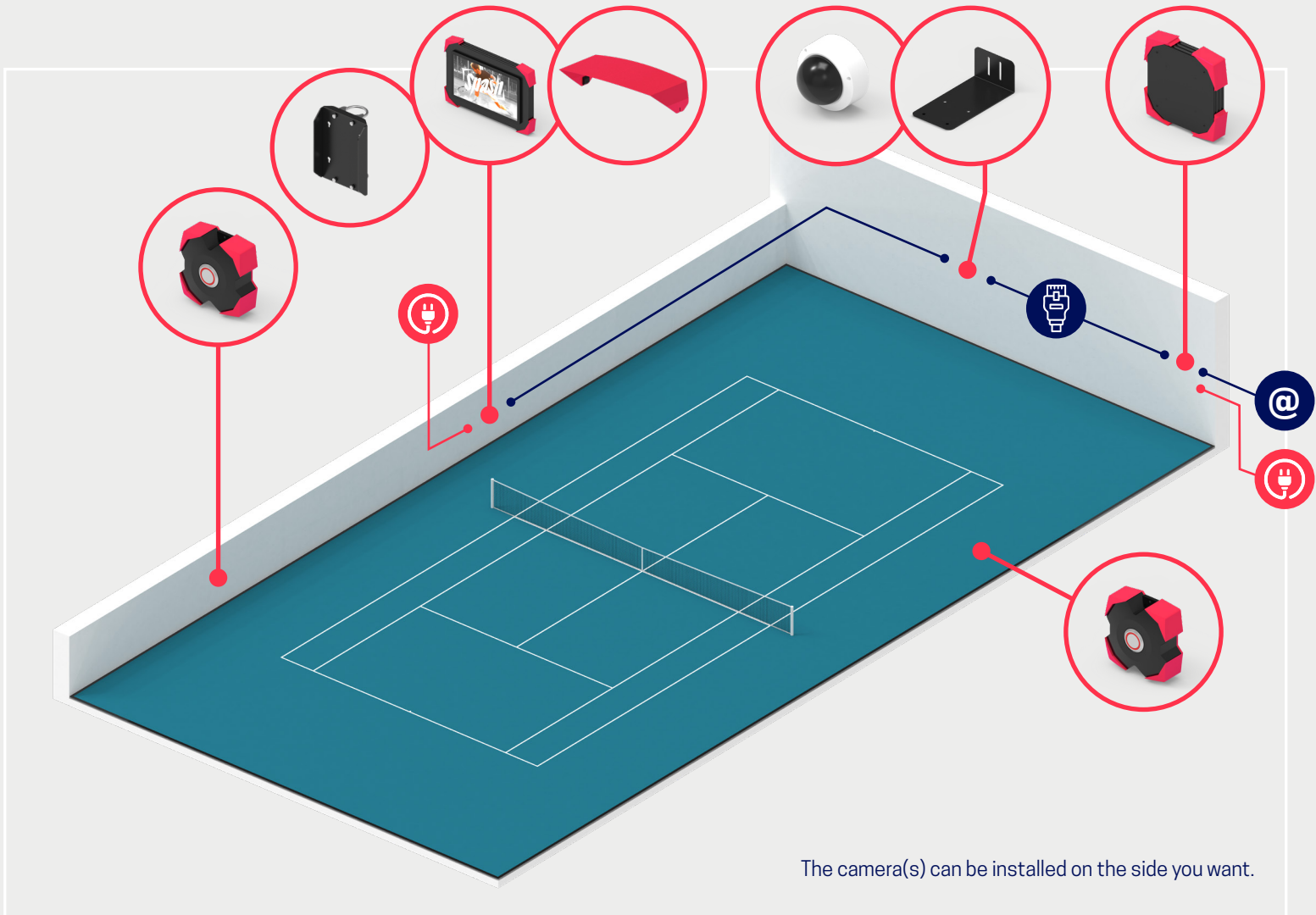


COACH PACK equipment:

- x1 **RECORDER BOX**
- x1 **PTZ camera**
- x1 **camera support** (L type)
- x1 **PLAYER BOX**
- x1 **PLAYER BOX support**
- x2 **buzzers**
- x1 **BP cap** (if outdoor)

Options:

- Additional cameras



The camera(s) can be installed on the side you want.

PACKS

COACH PLUS PACK



PACKS COACH PACK PLUS

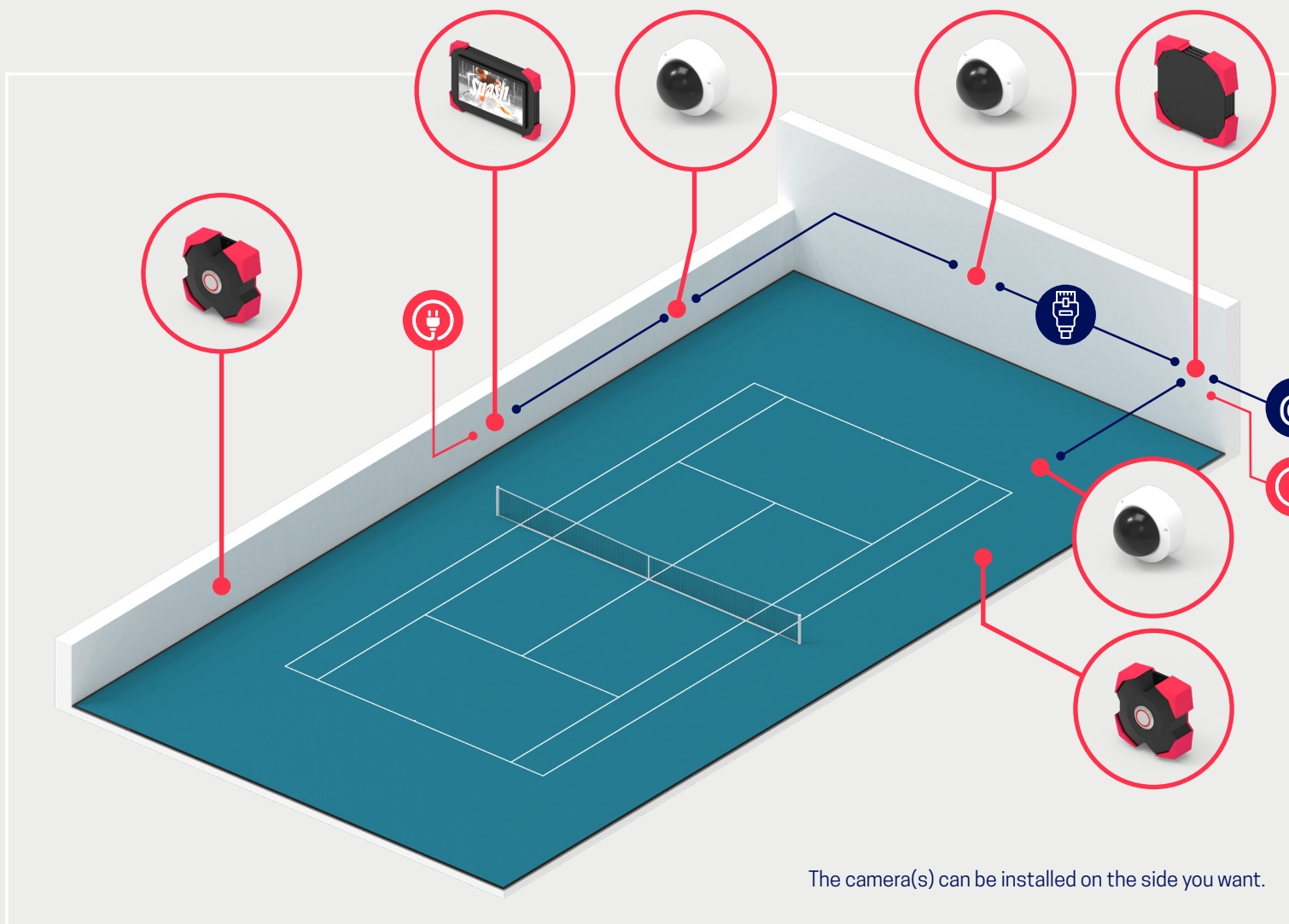


COACH PLUS PACK equipment:

- x1 **RECORDER BOX**
- x3 **PTZ camera**
- x3 **camera support** (L type)
- x1 **PLAYER BOX**
- x1 **PLAYER BOX support**
- x2 **buzzers**
- x1 **BP cap** (if outdoor)

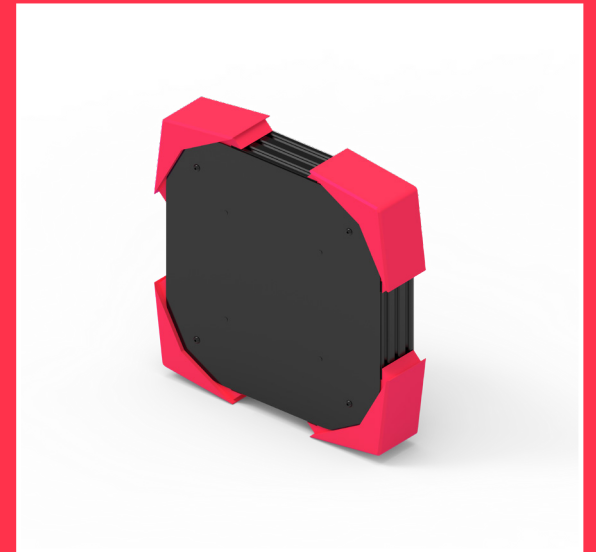
Options:

- Additional cameras



INSTALLATION INSTRUCTIONS

RECORDER BOX / SWITCH BOX



INSTALLATION INSTRUCTIONS RECORDER / SWITCH BOX



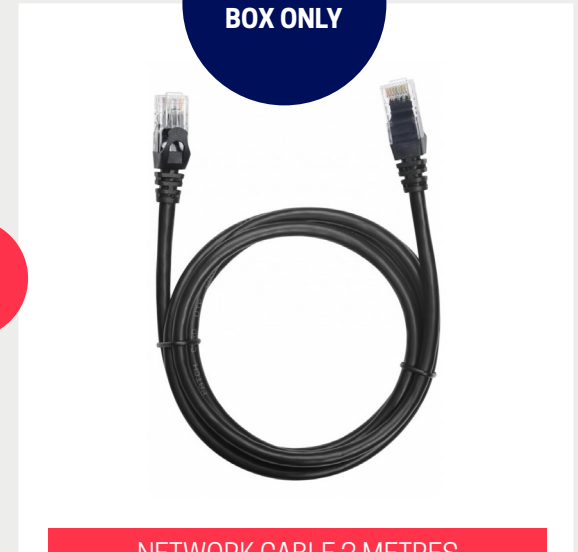
Equipment included in the box (depending on version)



RECORDER BOX + WALL MOUNT



POWER CABLE



NETWORK CABLE 2 METRES

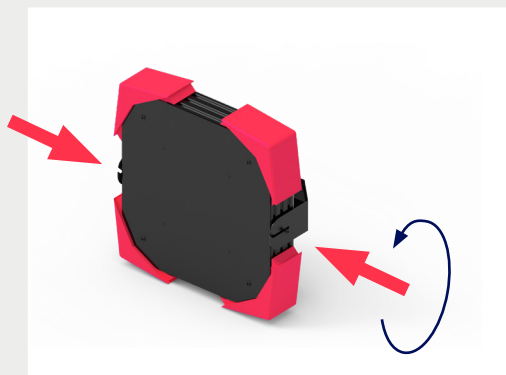
RECORDER
BOX ONLY

NOTICE DE MONTAGE BOX RECORDER / SWITCH

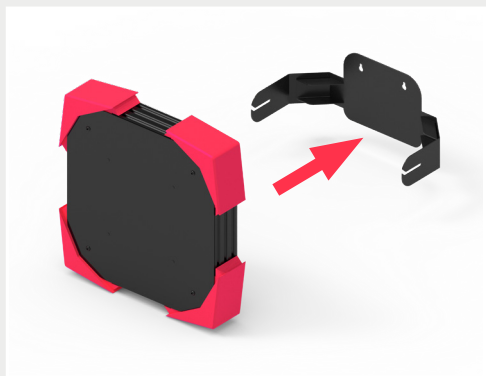


1

Preparation



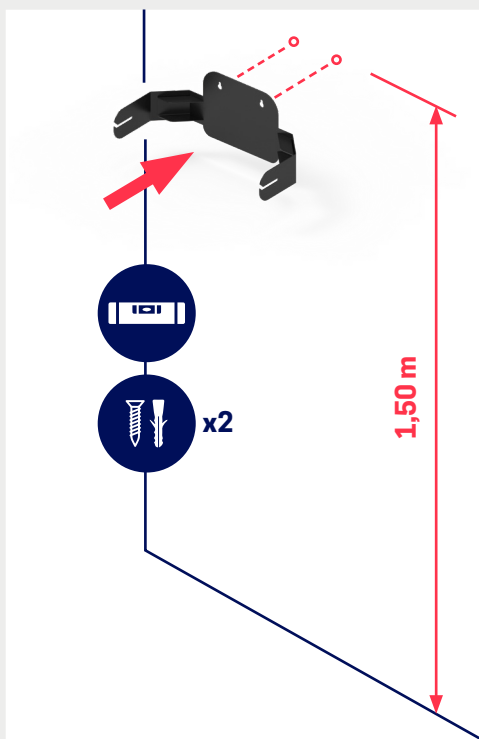
- Slightly unscrew the two screws on each side.



- Remove the wall mount.

2

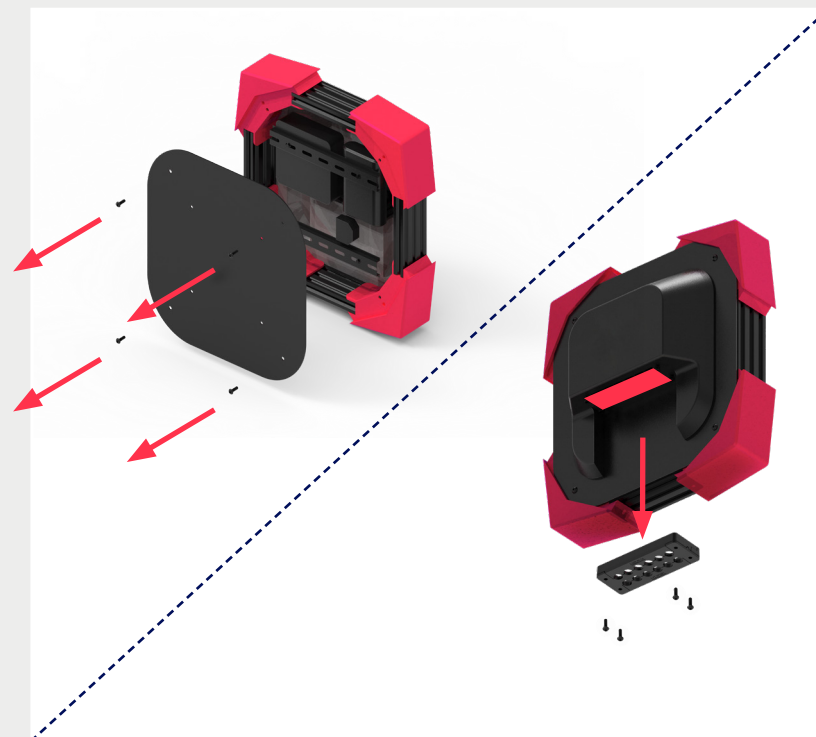
Fixing the wall



- Fix the mount to the wall using a spirit level.
- We recommend a height of 1.50 metres to enable you to work properly.
- This box must be accessible for maintenance.

3

Dismantling before wiring



- Loosen the screws on the front cover
- Remove the cable panel screws and then the two parts of the panel

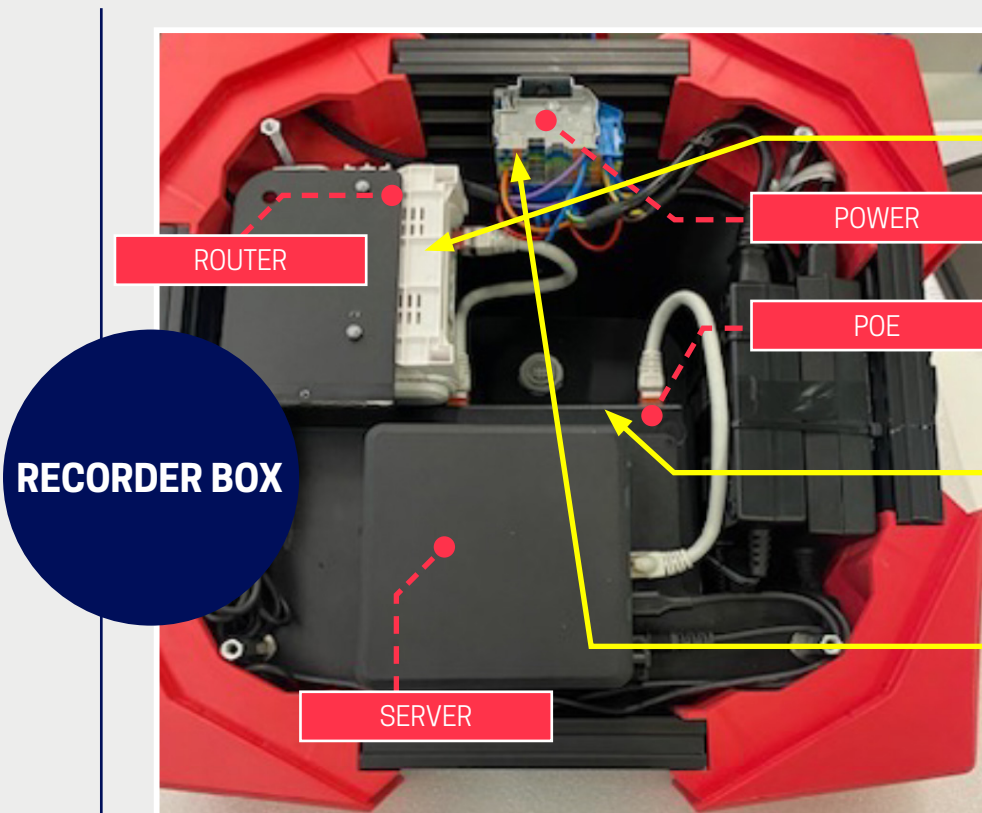
INSTALLATION INSTRUCTIONS RECORDER / SWITCH BOX



4.1

Wiring and power supply

RECORDER BOX



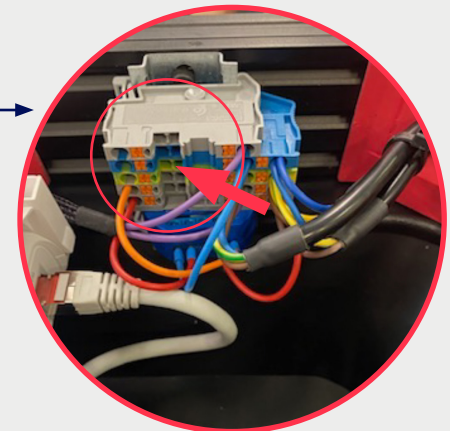
1

- Connect your Internet access to the router on the WAN port.



2

- Connect the other SPASH equipment to the PoE switch ports



3

- Connect the power supply to the terminal block (phase / earth / neutral)

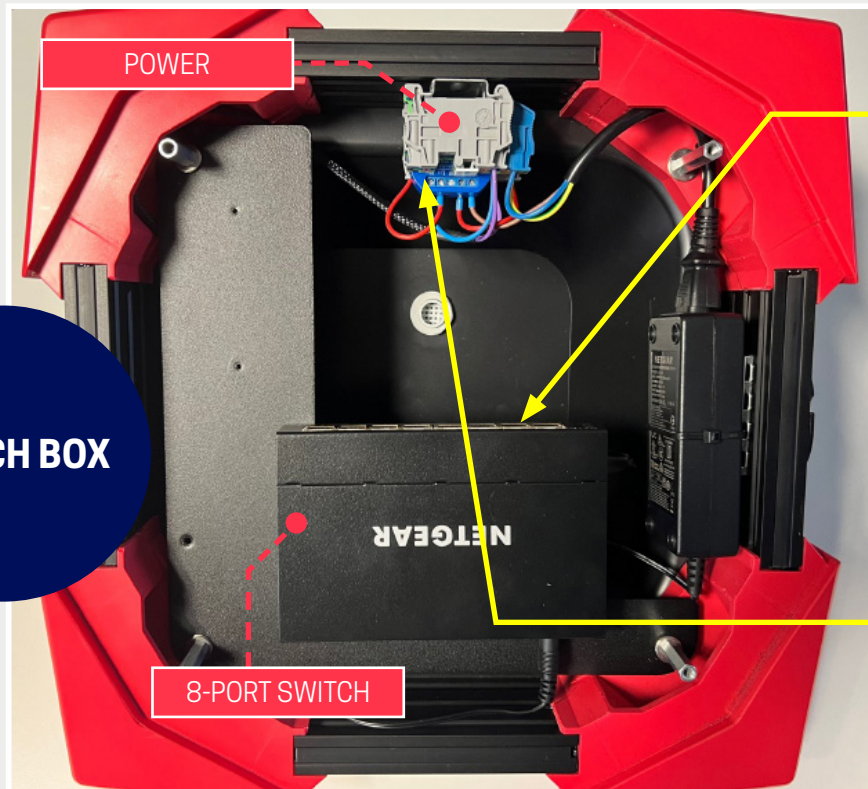
INSTALLATION INSTRUCTIONS RECORDER / SWITCH BOX



4.2

Wiring and power supply

SWITCH BOX



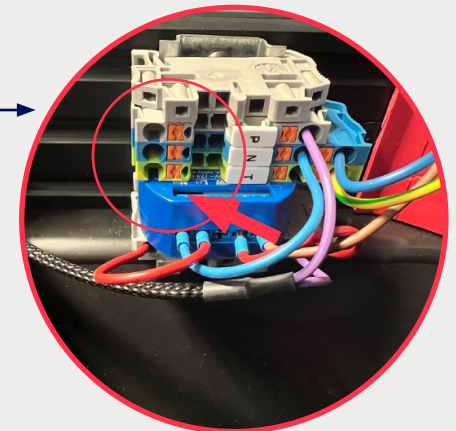
1

- Connect the other SPASH equipment to the switch ports.



2

- Connect the power supply to the terminal block (phase / earth / neutral)

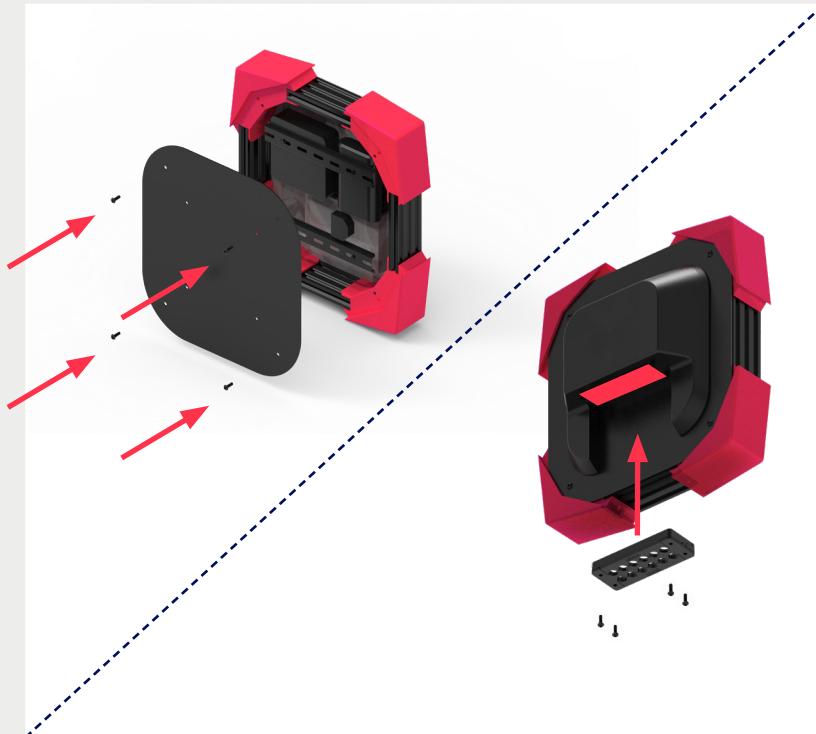


INSTALLATION INSTRUCTIONS RECORDER / SWITCH BOX



5

Reassembly after wiring



- Tighten screws on the front cover
- Insert the two parts of the cable panel and screw them back together.

6

Mounting BOX on wall bracket



- Engage the screws in the groove in the bracket then tighten the 4 screws.

INSTALLATION INSTRUCTIONS

PLAYER BOX



INSTALLATION INSTRUCTIONS PLAYER BOX



Equipment included in the box (depending on version)

x1



PLAYER BOX

x1



TV WALL MOUNT

x1



POWER CABLE

x1



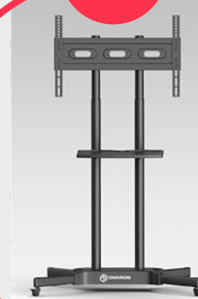
NETWORK PATCH CABLE

x1



CAP (optional)

x1



MOBILE TV SUPPORT
(optional)

INSTALLATION INSTRUCTIONS PLAYER BOX



Mounting the screen

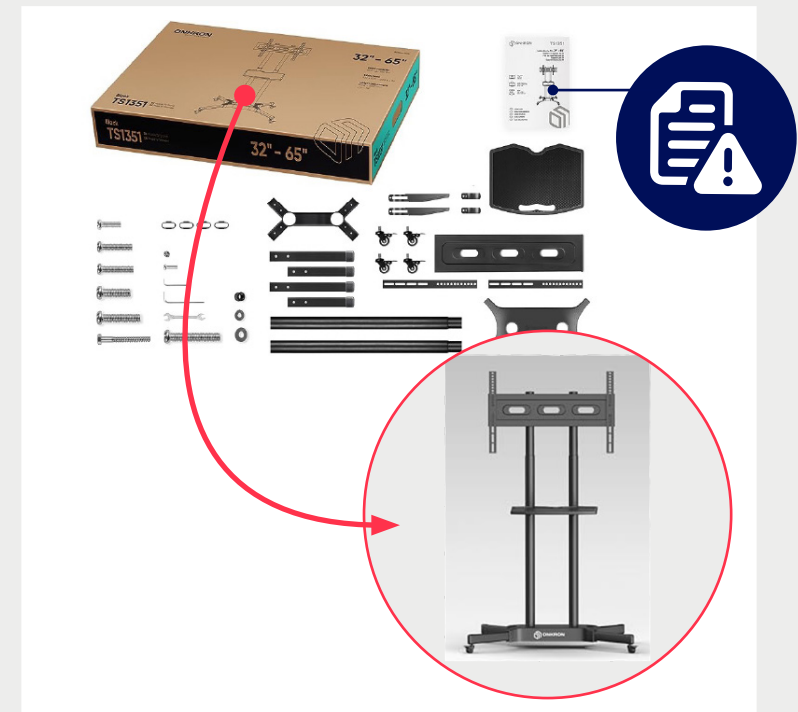
1

Install the supplied VESA TV bracket at a height of 1.5m



▪ For assembly : refer to the instructions in the packaging

Mobile VESA support option :



▪ For assembly : refer to the instructions in the packaging.

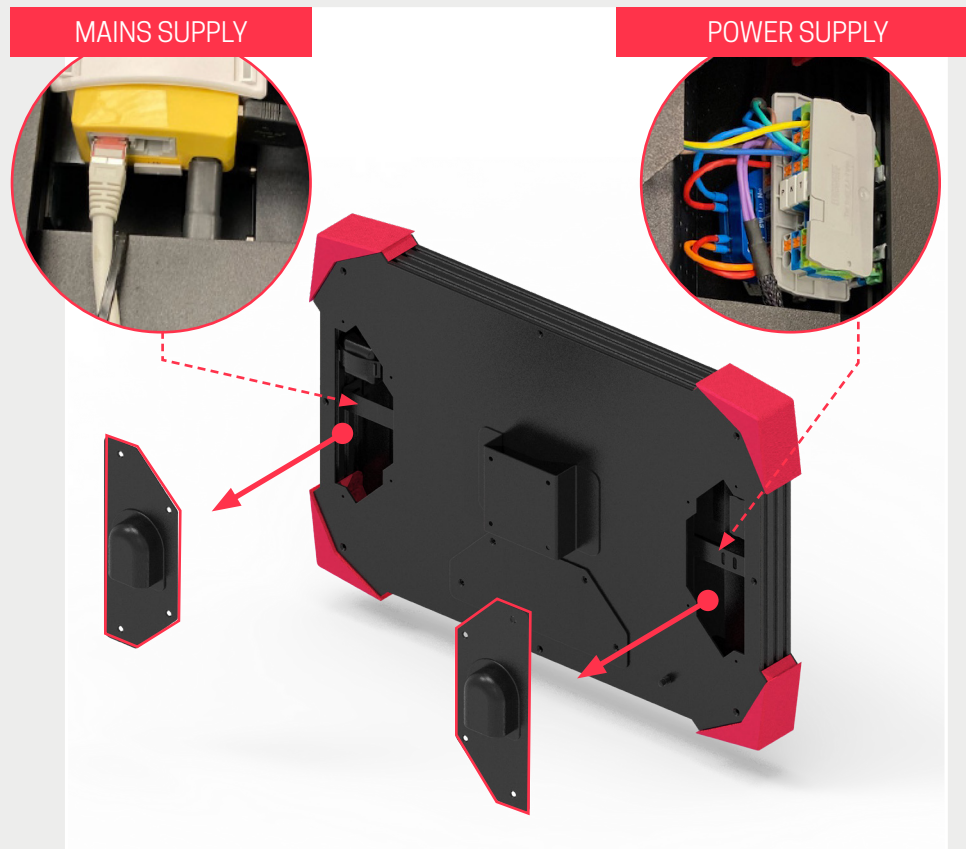
INSTALLATION INSTRUCTIONS PLAYER BOX



Mounting the screen

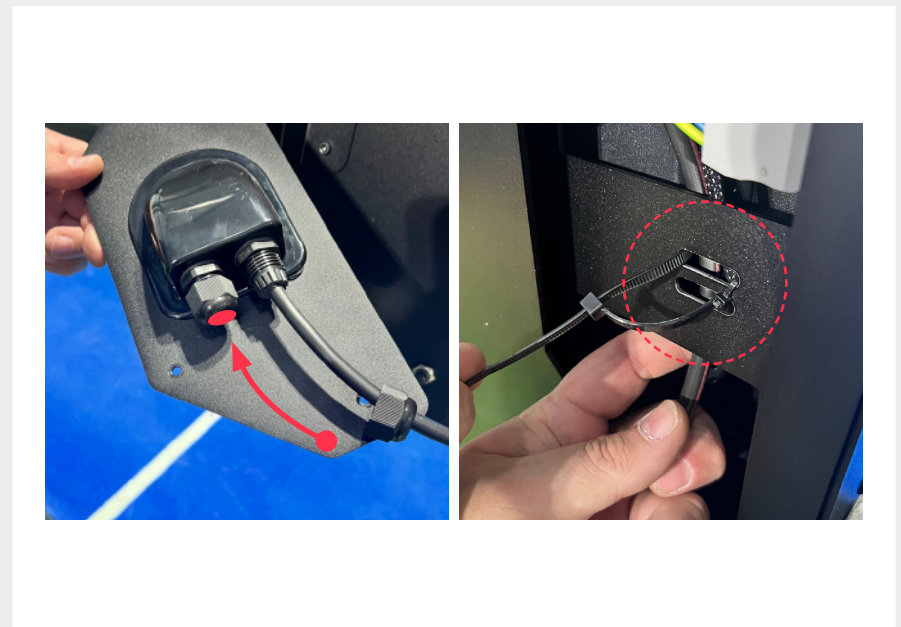
2

Remove the access covers from the BOX PLAYER



3

Pass the cables through the cable glands



- Unscrew the cable glands and route the necessary cables
- Secure the cables with cable ties in the oblongs provided.

INSTALLATION INSTRUCTIONS PLAYER BOX



Mounting the screen

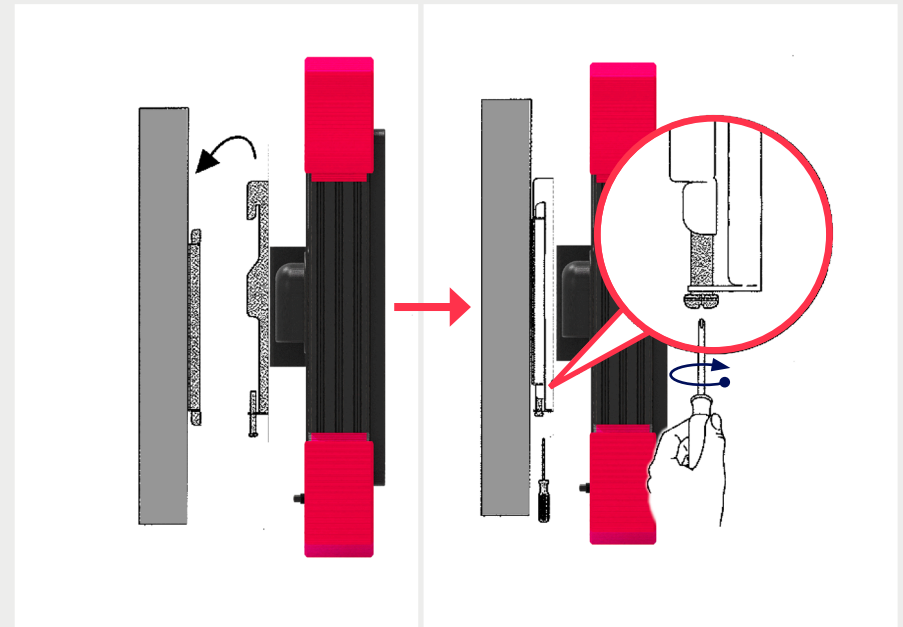
4

Remove the access covers from the PLAYER BOX



5

Install the PLAYER BOX on the VESA mount



- Attach the screen support to the rear of the PLAYER BOX
- Slide the assembly onto the wall mount and lock by tightening the locking screw

ACCESSORIES

CAMERAS



ACCESSORIES CAMERAS



Equipment included for the camera

x1



CAMERA SUPPORT

x1



CAMERA

ACCESSORIES CAMERAS



Camera mounting

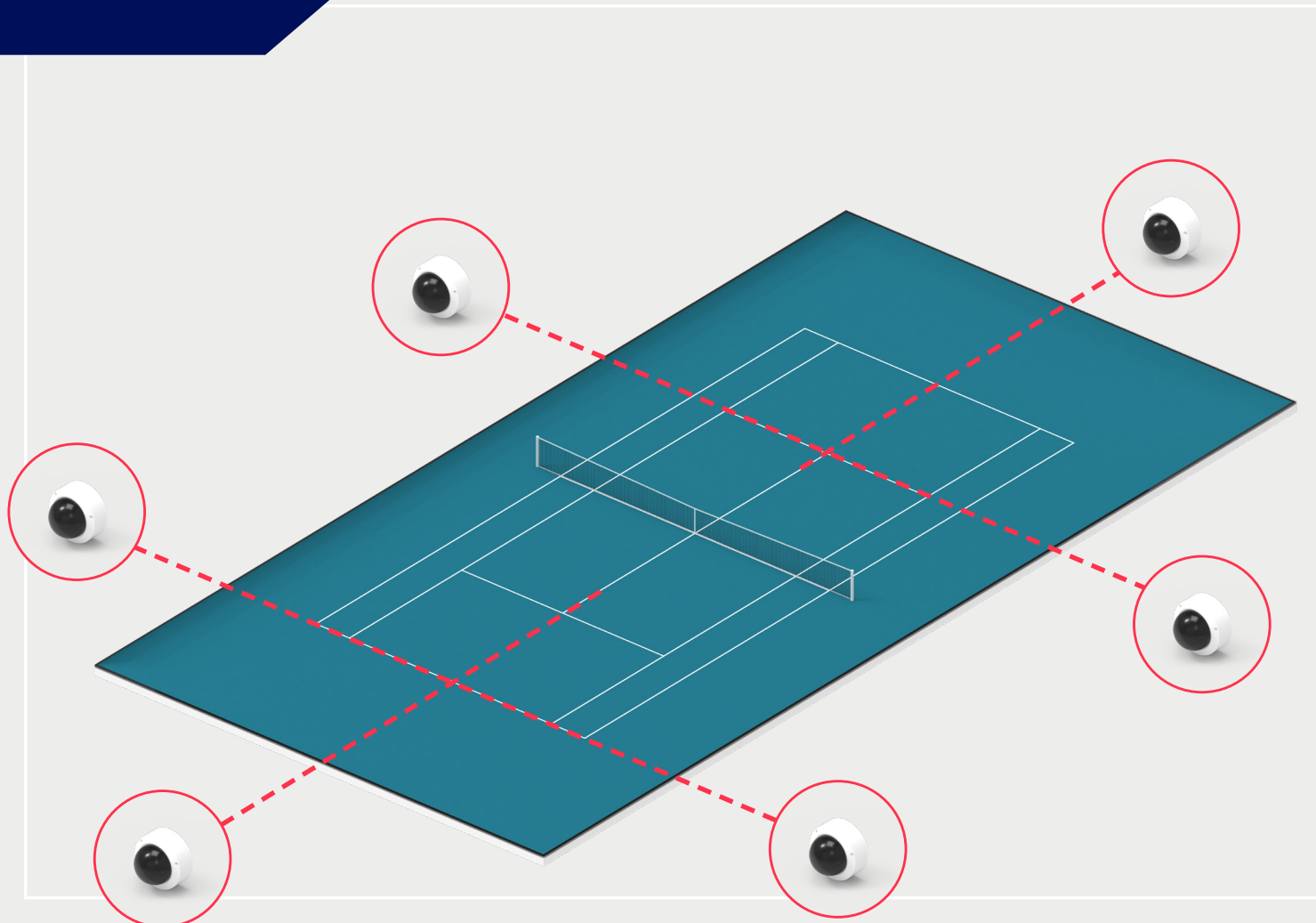
- The pack consists of **1 to 3 cameras**. We recommend that the central camera is positioned in line with the service tee at a height of about 3 metres.

- For the other two cameras, position them according to the supports you have available.

- We recommend the back of the court between 2 and 3 metres,

- The camera lenses can be remotely adjusted for angle and zoom by our support department.

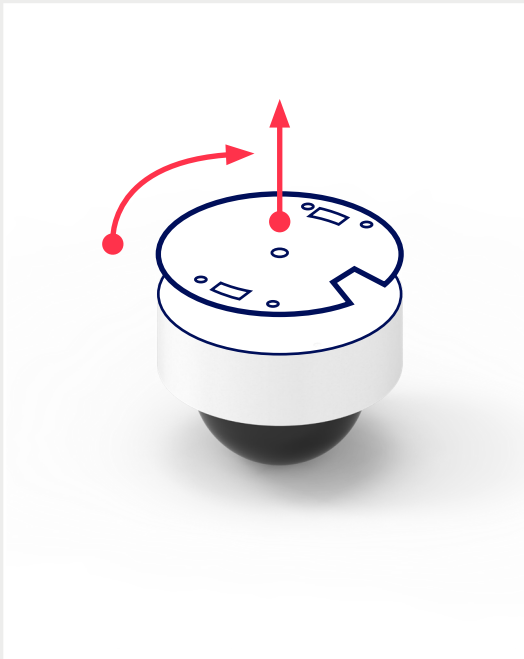
- **It is necessary to fix the camera on its support, otherwise it cannot be properly adjusted**



Camera mounting

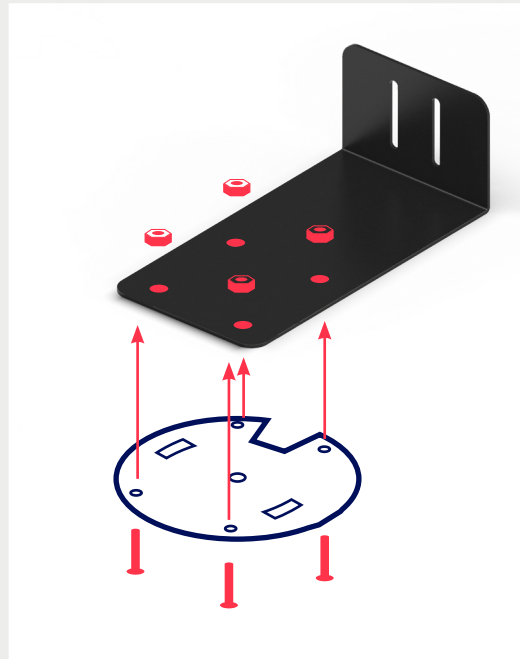
1

Remove the support from the camera by turning it a quarter turn



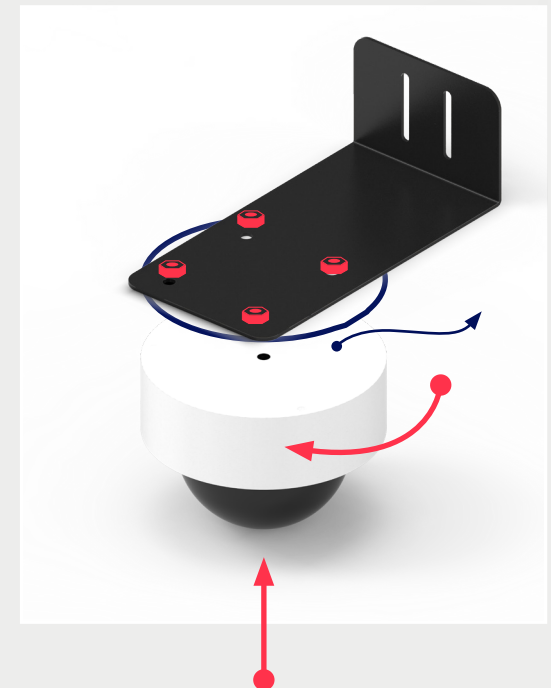
2

Fix the support to the bracket using the M4 screws and lock nuts supplied.



3

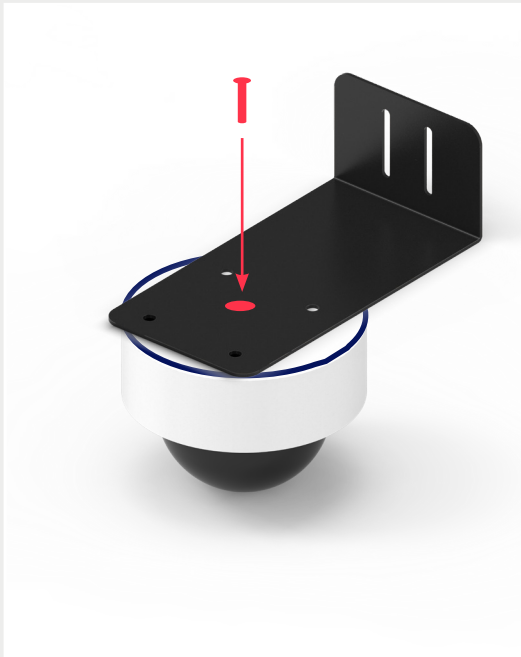
Secure the camera to the support by a quarter turn. Orient the cable towards the rear of the support



Camera mounting

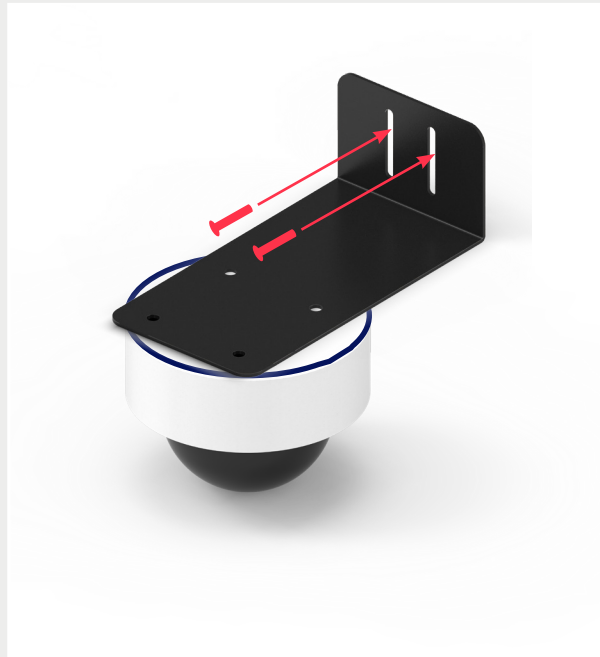
4

Secure the camera with the locking screw



5

Fix the bracket to the support of your choice using the drill holes



- Widen the holes if necessary
- The bracket can be fixed to poles using clamps

ACCESSORIES CAMERAS



Connecting the camera

The camera is wired and has an RJ45 connector. **For outdoor installation, you will need to seal the connection using a standard PLEXO box (not supplied).**

It is advisable to make a drip loop with the cable and to make the passages through the underside of the box to avoid water infiltration.

Otherwise, refer to the camera manual.



ACCESSORIES CAMERAS



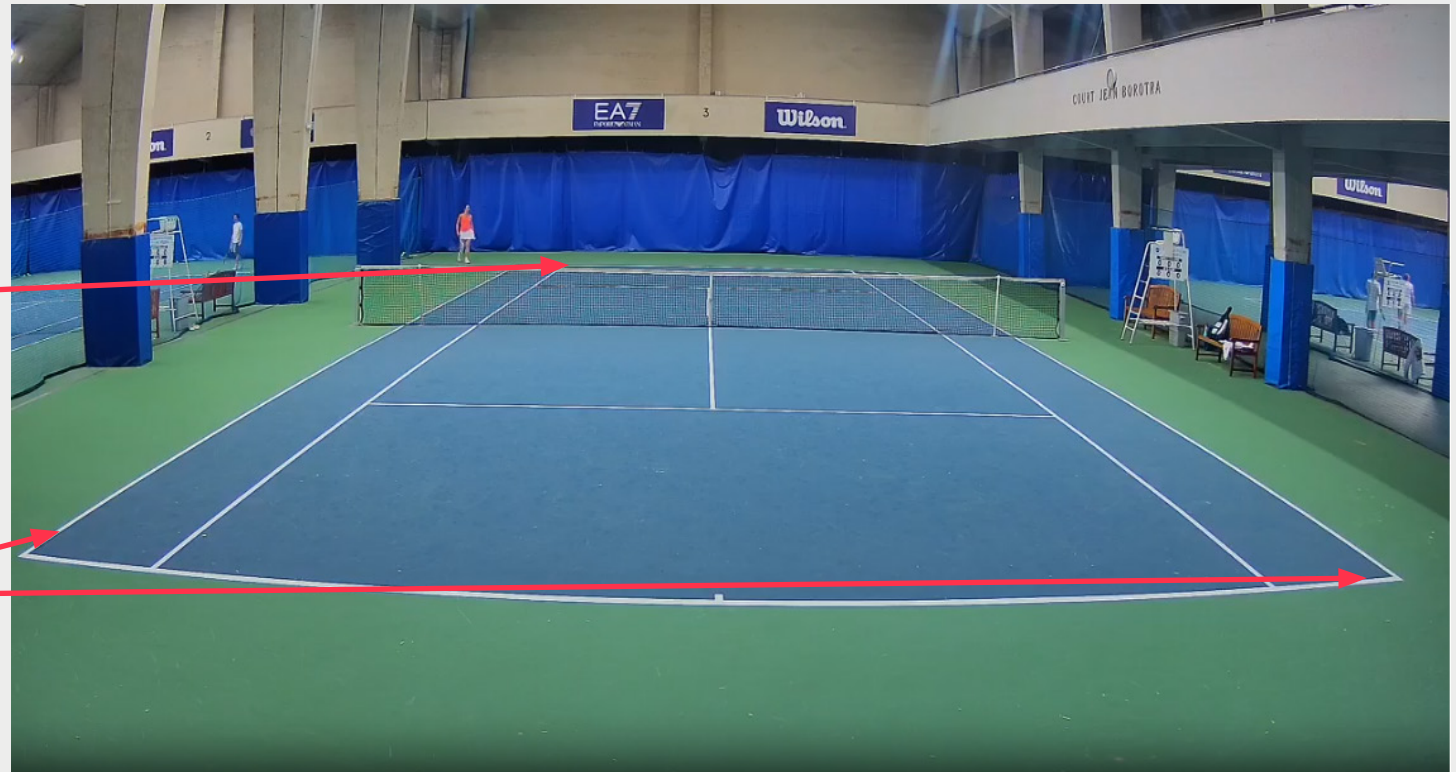
Adjusting the camera angle

Our teams can remotely adjust the cameras.

The angle settings are left and right, as is the zoom.

The net must be above the middle of the image.

Zoom the angle to have the pitch on the left and right of the image.



ACCESSORIES

BUZZERS



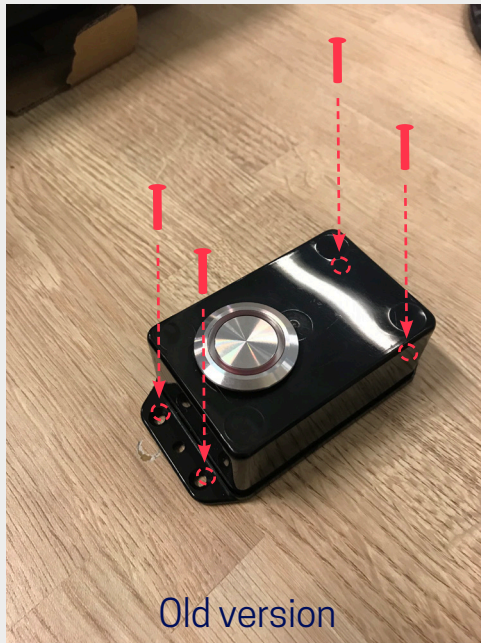
ACCESSORIES BUZZERS



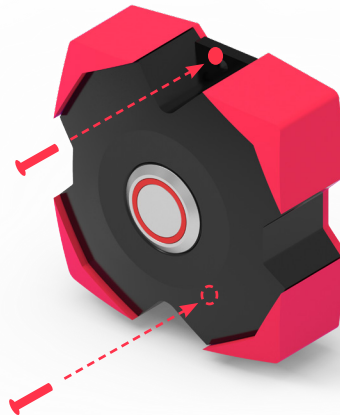
Fixing the buzzers

1

Attach the buzzers to the structures of your choice



- Use the fixing holes provided.
- Buzzers can be fixed to poles using clamps.



New version

2

The button's position can be changed to suit your requirements



ACCESSORIES

CAP



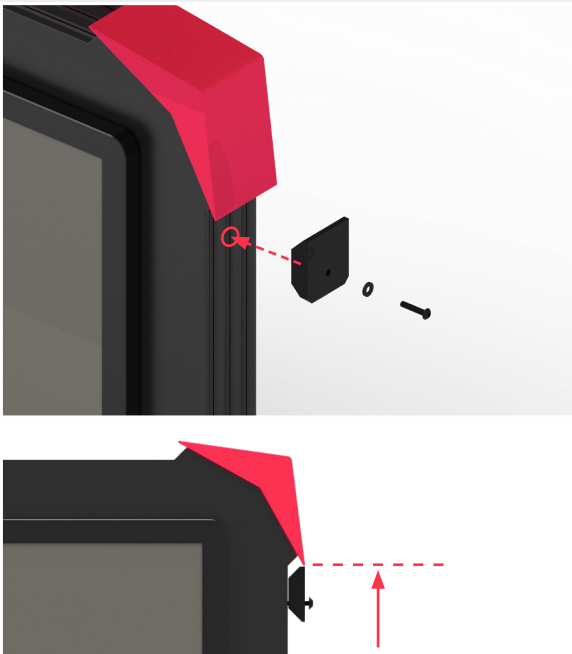
ACCESSORIES CAP



Fixing the PLAYER BOX cap

1

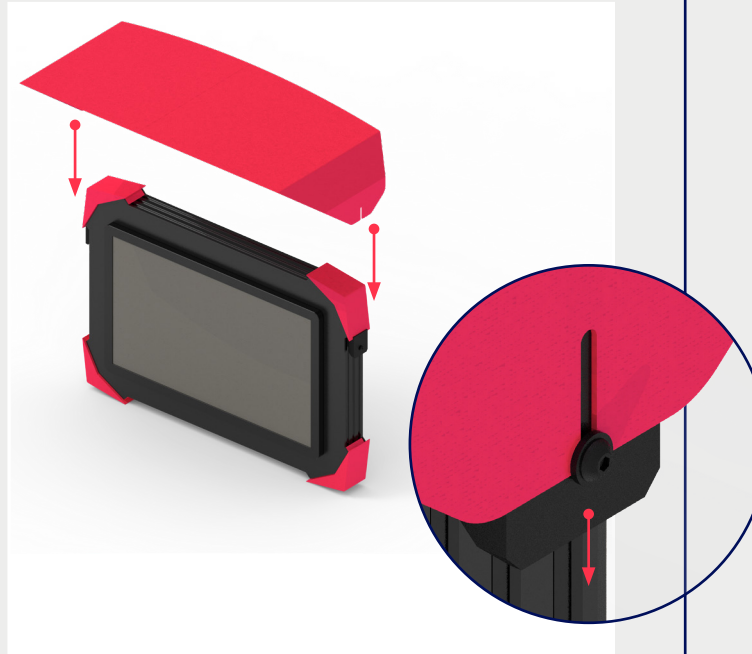
Screw the spacers on both sides



- Do not screw all the way in, leave a gap of +/-5 mm
- The spacers must be fixed against the pink angles

2

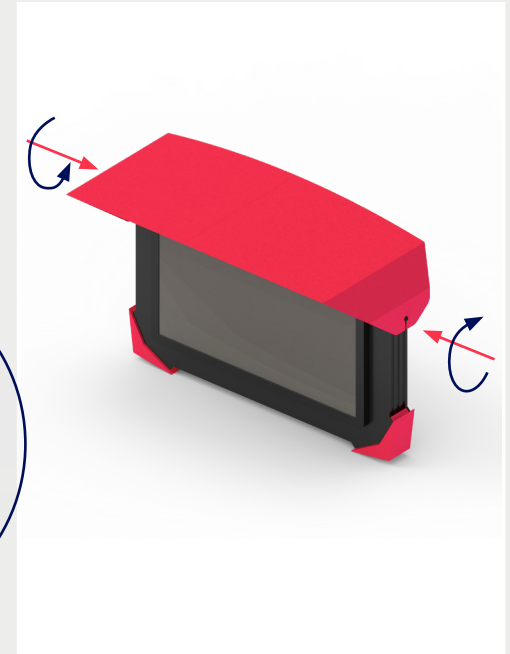
The button's position can be changed to suit your requirements



- Fit the cap by sliding the slots through the screws in the spacers.

3

The button's position can be changed to suit your requirements



- Finalise the installation by fully tightening the screws on the spacers.

ACCESSORIES

WIFI AP



ACCESSORIES WIFI AP



If you do not have a PLAYER BOX in your package and you wish to use SPASH buzzers, you will need a SPASH wifi accessory. The equipment will be added to your order.

Position the equipment as close as possible to the equipped SPASH courts.

Use a Recorder BOX or Switch BOX to power the equipment via POE.



ACCESSORIES

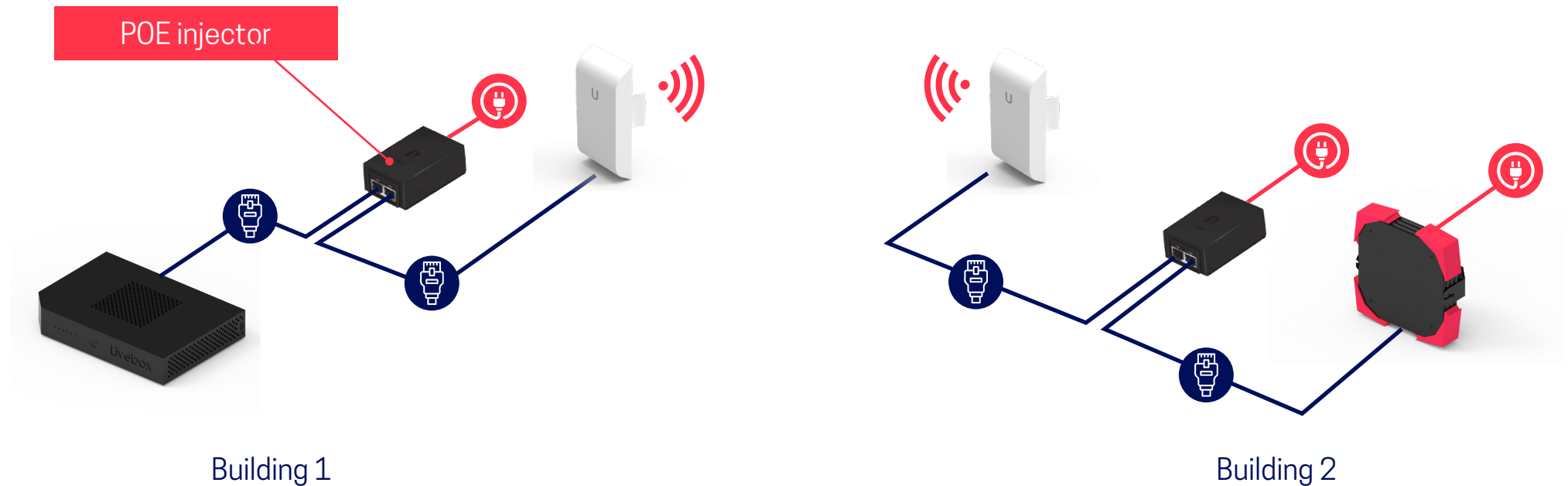
BRIGDE



ACCESSORIES BUZZERS



If your pitches are not in the same building as your internet access, rather than installing a taut cable or digging a trench, we recommend that you install a wifi bridge between the two buildings to link them together. The equipment works according to the principle below.



 Ethernet network cable (cat 6a min)

 Requires an electrical socket

POST MATCHES

Post Match TV



POST MATCHES Post Match TV



Equipment included

x1



MINI PC

x1



WIRELESS MOUSE

x1



NETWORK PATCH CABLE

x1



HDMI CABLE

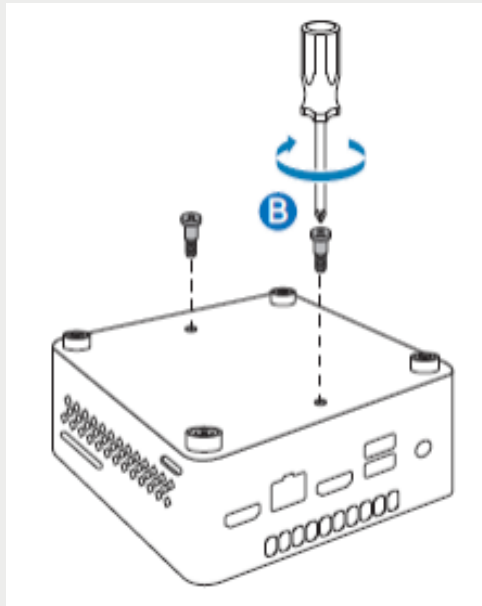
POST MATCHES Post Match TV



Mini PC mounting

1

Install the 2 screws on the PC chassis



2

Mount the bracket on the wall

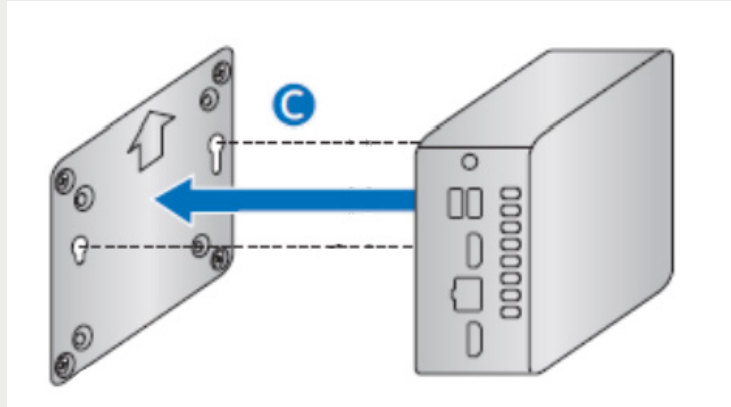


- Align the bracket with the arrow pointing upwards, then secure the bracket using 4 screws.

Mini PC mounting

3

Attach the mini PC to the



- Slide the two screws into the keyhole slots, then lower the assembly to lock the mini PC in place

4

Connect the cables

- Connect the network cable
- Connect the HDMI cable between the mini PC and the TV
- Connect the USB dongle for the wireless mouse
- Connect the power cable to the mini PC When the mini PC is powered up, it should start up automatically and open the configured page.

POST MATCHES

Tactile Post-Match



POST MATCHES Tactile Post Match



Equipment included

x1



PLAYER BOX

x1



TV WALL MOUNT

x1



NETWORK PATCH CABLE

x1



POWER CABLE

POST MATCHES Tactile Post Match



Mounting the screen

1

Install the supplied VESA TV bracket at a height of 1.5m



- For assembly : refer to the instructions in the packaging.

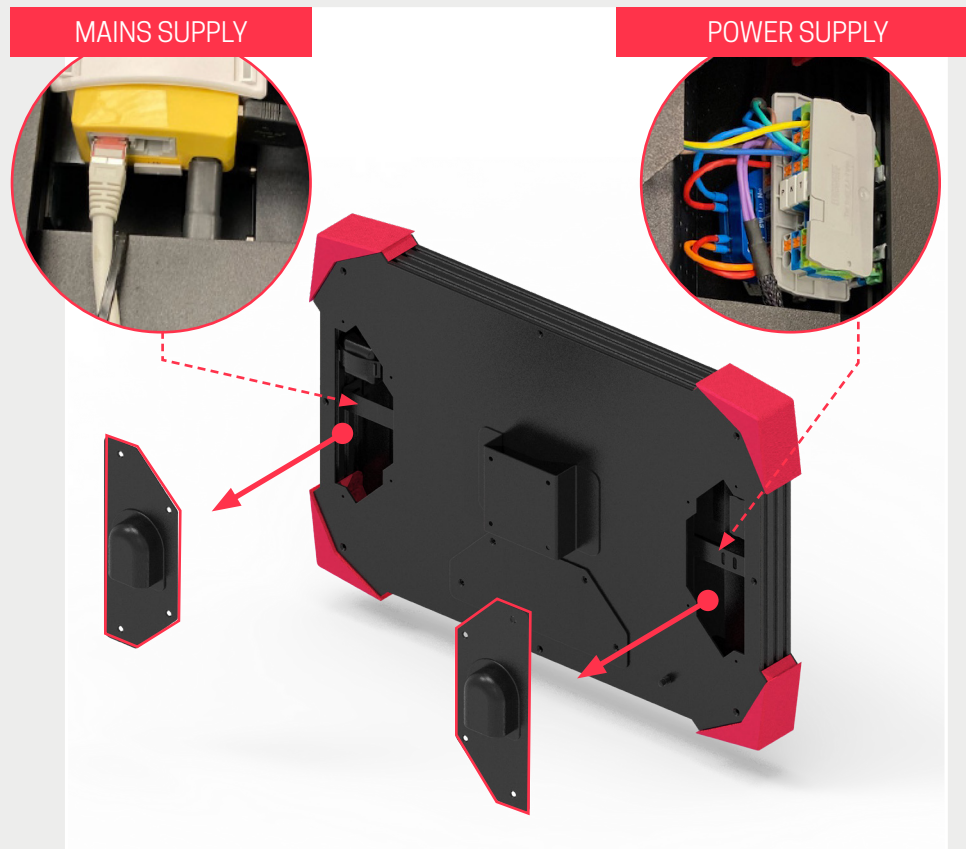
POST MATCHES Tactile Post Match



Mounting the screen

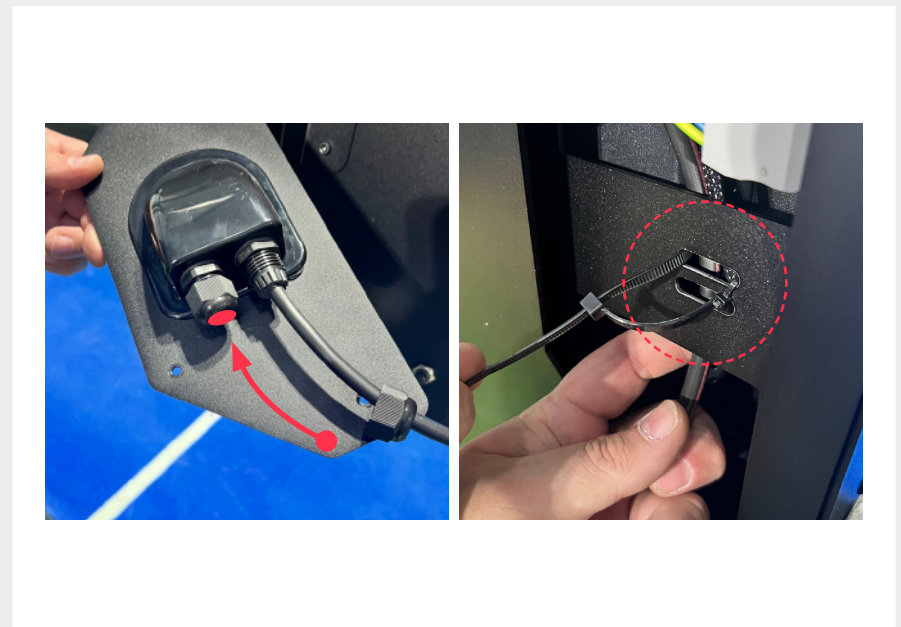
2

Remove the access covers from the PLAYER BOX



3

Pass the cables through the cable glands



- Unscrew the cable glands and route the necessary cables
- Secure the cables with cable ties in the oblongs provided.

POST MATCHES Tactile Post Match



Mounting the screen

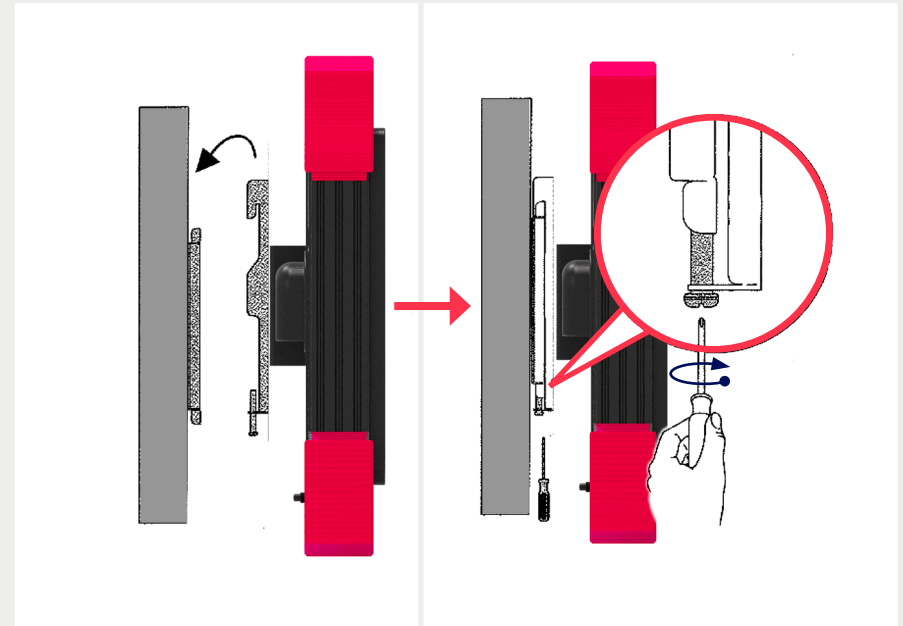
4

Remove the access covers from the PLAYER BOX



5

Install the PLAYER BOX on the VESA mount



- Attach the screen support to the rear of the PLAYER BOX
- Slide the assembly onto the wall mount and lock by tightening the locking screw

SPASH TV



Equipment included

x1



SPASH TV

x1



TV WALL MOUNT

x1



NETWORK PATCH CABLE

x1

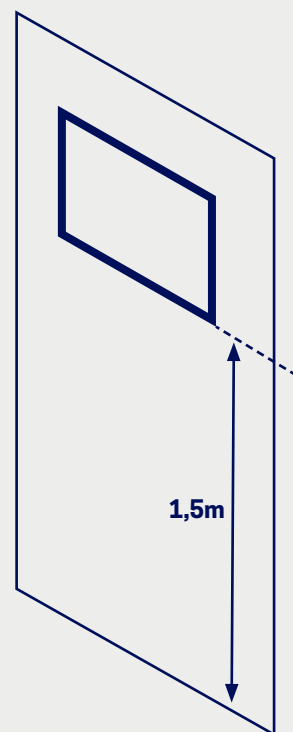
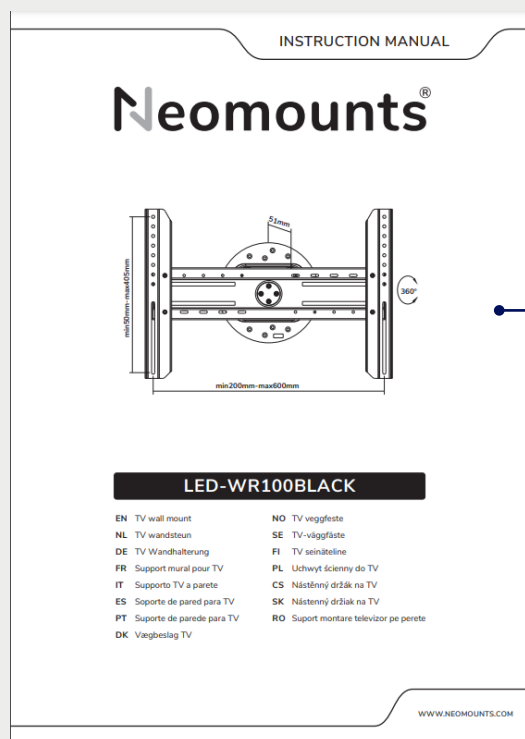


POWER CABLE

Mounting the screen

1

Install the supplied VESA TV bracket at a height of 1.5m

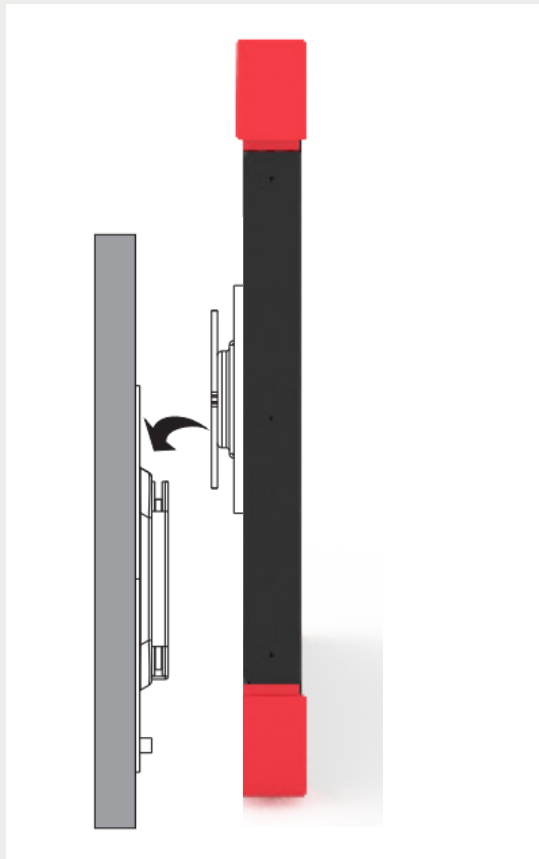


- For assembly: refer to the instructions in the packaging.

Mounting the screen

2

Position the screen in its stand



3

Connect the cables



- Connect the power cable and the network cable
SPASH TV turns on automatically when the power is on and the application is loaded directly.

COMMISSIONNING

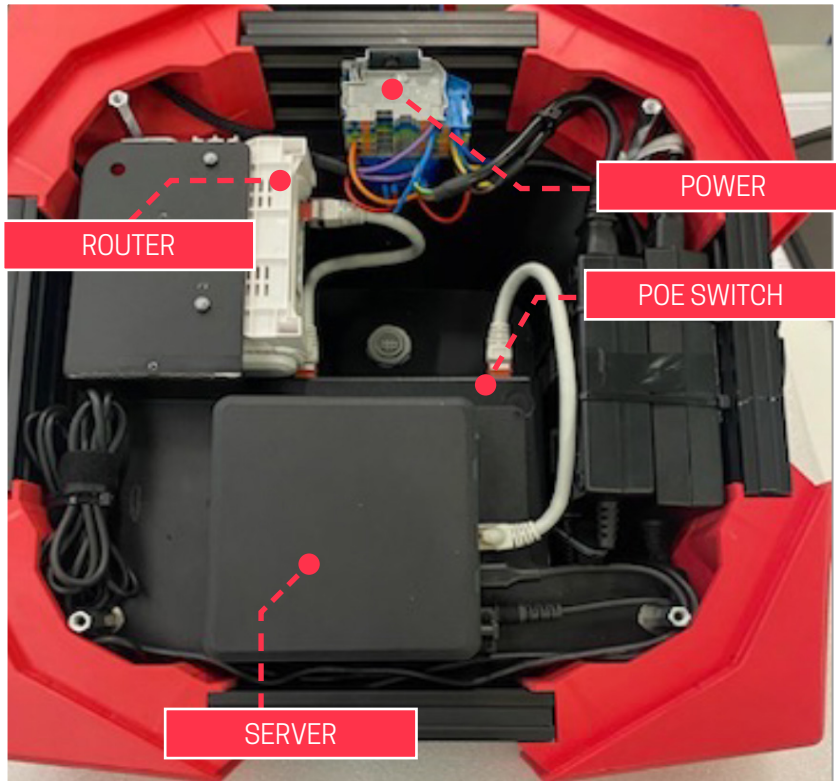
CHECKING THE SYSTEM



COMMISSIONNING

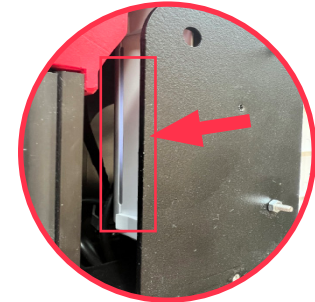


Checking the RECORDER BOX



1

The light must be white and remain on continuously. The cable from your internet box must be on the WAN port



2

The switch LED must be lit



3

The server LED must be lit



4

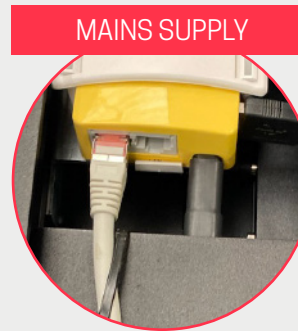
The wifi with the name SPASH_XXX must be visible on your smartphone

Checking the Switch Box

- 1 Connect the switch box to the mains
- 2 Connect the switch box to the mains
- 3 Check that the LEDs are flashing for each port connected

Checking the Player Box

- 1 Connect the Player Box to the mains



- 2 When you connect the mains, the screen lights up and the software starts up.



If you see a blank page, this means that the screen is not connected to the Recorder box.

COMMISSIONNING



Checking the Player Box

- 3 Start a session
- 4 The session will start up. If it does not, check that the cameras are properly connected.



Click on the instant replay tab



Use the live view to adjust the camera angle

Checking buzzers

- 1 Launch a session
- 2 Once the session has been started, if you press the buzzer, the screen should display :



System check

- Internet access must be available
- The RECORDER BOX must be switched on
- The switch box, if present, must be switched on
- The player box must be switched on
- Camera(s) must be connected to the recorder box or switch box

You can call the SPASH hotline on **+33 4 81 69 47 33**
to control the system