



CONTENTS



★ Overview	3
★ Prerequisites	9
★ Specification sheets	11
★ Packs :	
	Starter Pack 16
	Player Pack 18
★ Installation instructions :	
	Recorder Box / Switch Box 20
	Player Box 26
★ Accessoires :	
	Camea 33
	Buzzer (optional) 41
	Cap (optional) 43
	Wifi AP (optional) 45
	Bridge (optional) 47
★ Post Matches	49
★ SPASH TV	58
★ Commissioning	62

OVERVIEW



GOOD TO KNOW



We strongly recommend that you hire a professional with the necessary qualifications to install electrical and network equipment.

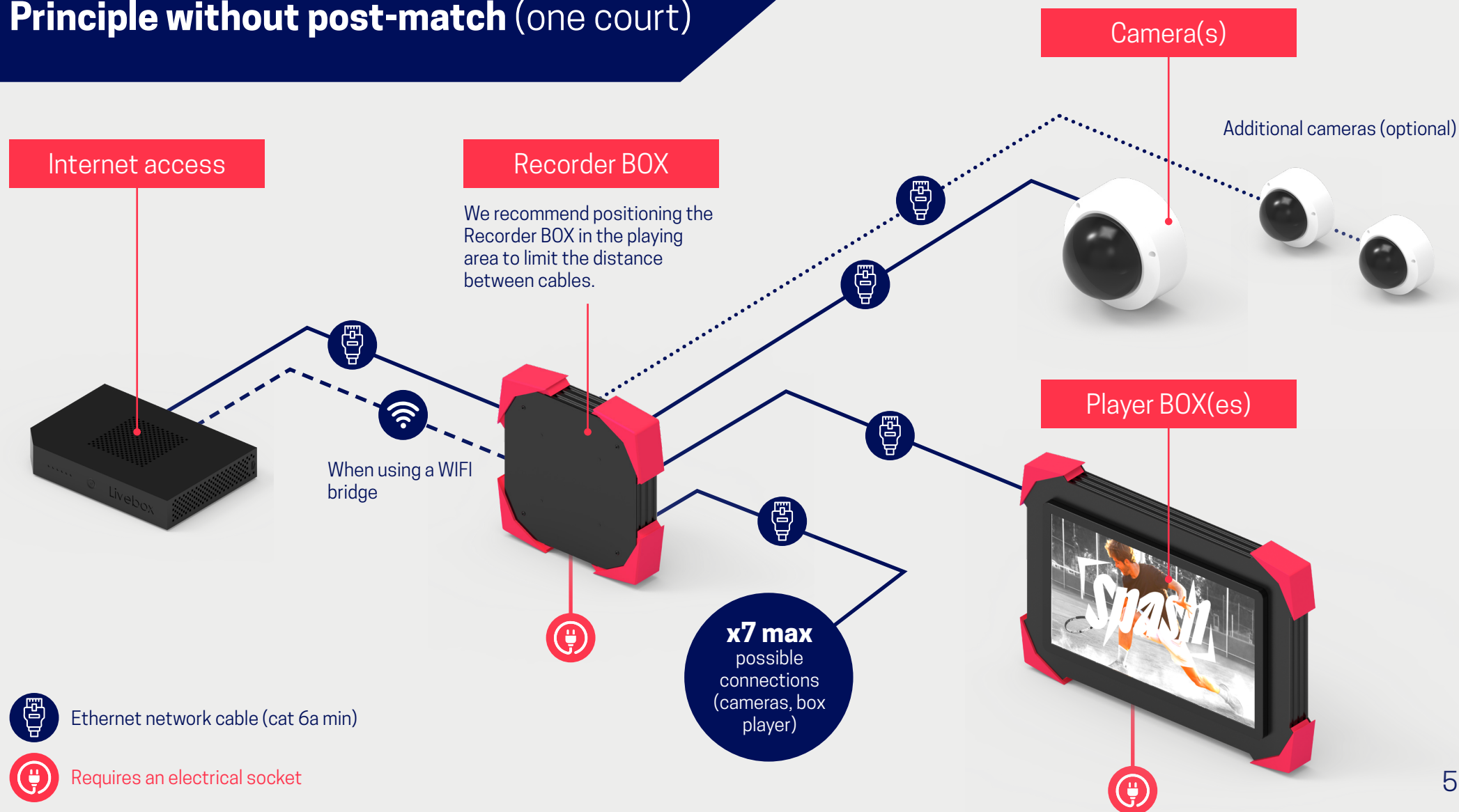
Inspect the packages to check that no equipment is missing or damaged. If this is not the case, call technical support on **+33 4 81 69 47 33**.

SPASH equipment operates on a local subnetwork broadcast by the Recorder BOX. Any equipment outside this network will not work.

OVERVIEW



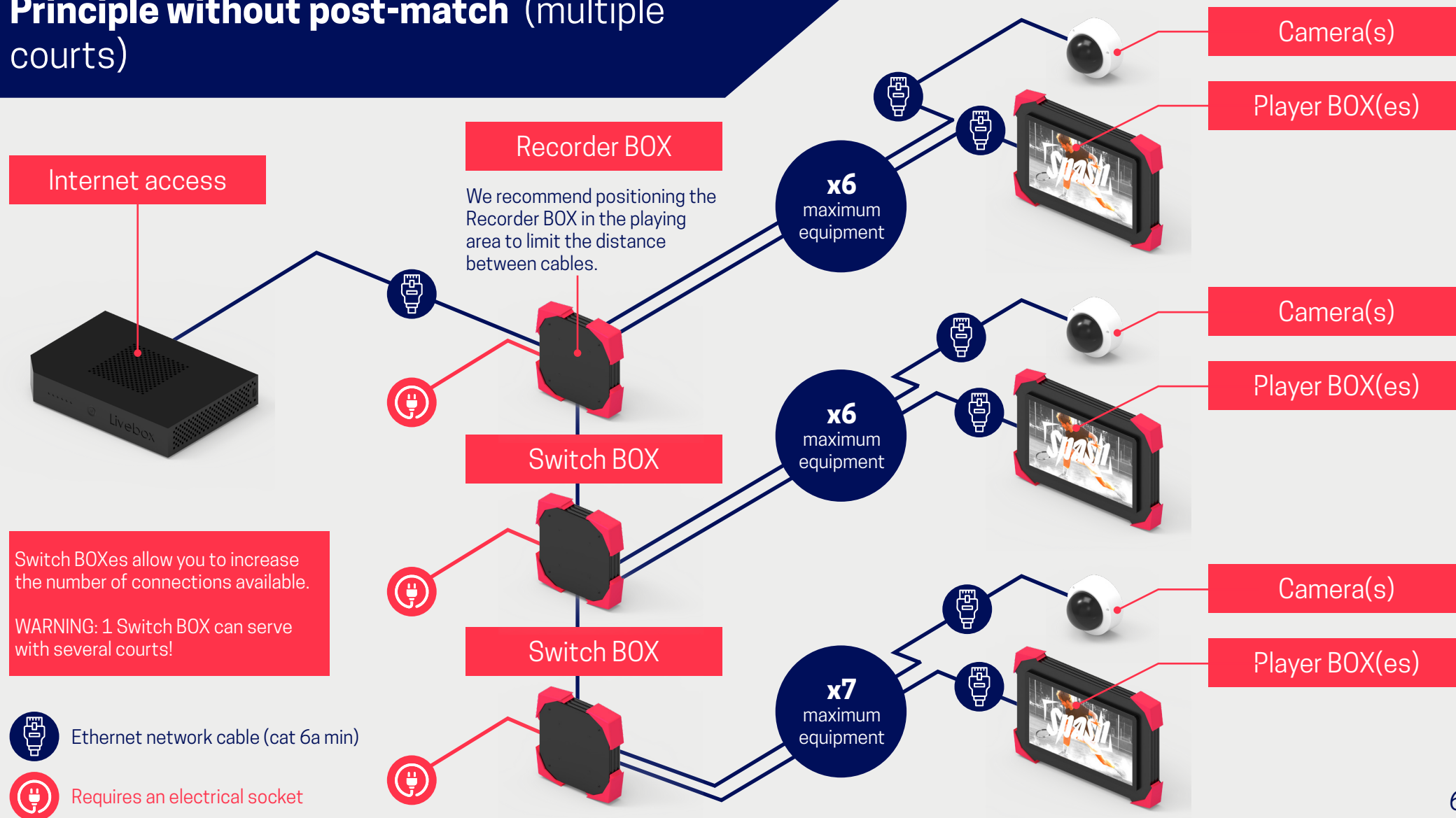
Principle without post-match (one court)



OVERVIEW



Principle without post-match (multiple courts)



OVERVIEW

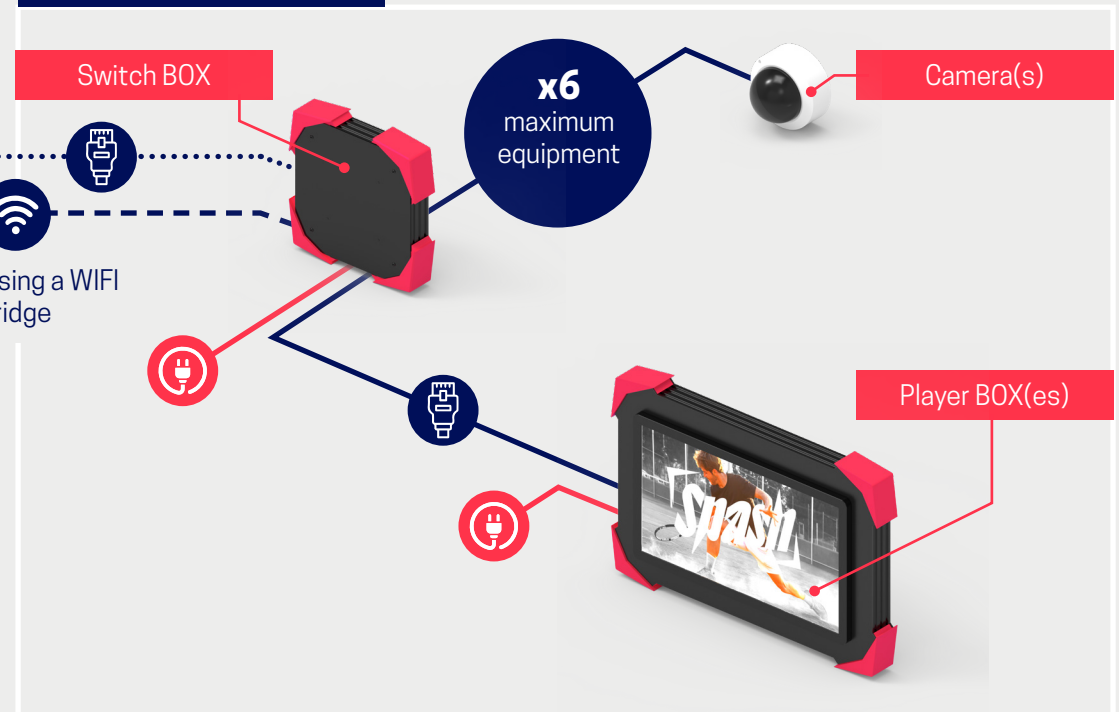


Principle with post match

Clubhouse area / Bar



Playing area / Fields



Ethernet network cable (cat 6a min)



Requires an electrical socket

Principle with launch terminal

Recorder BOX

We recommend positioning the Recorder BOX in the playing area to limit the distance between cables.

Wifi AP

It enables the buzzer to operate

Camera(s)

Additional cameras (optional)

Player BOX(es) Launch terminal

Allows you to control several courts at the same time

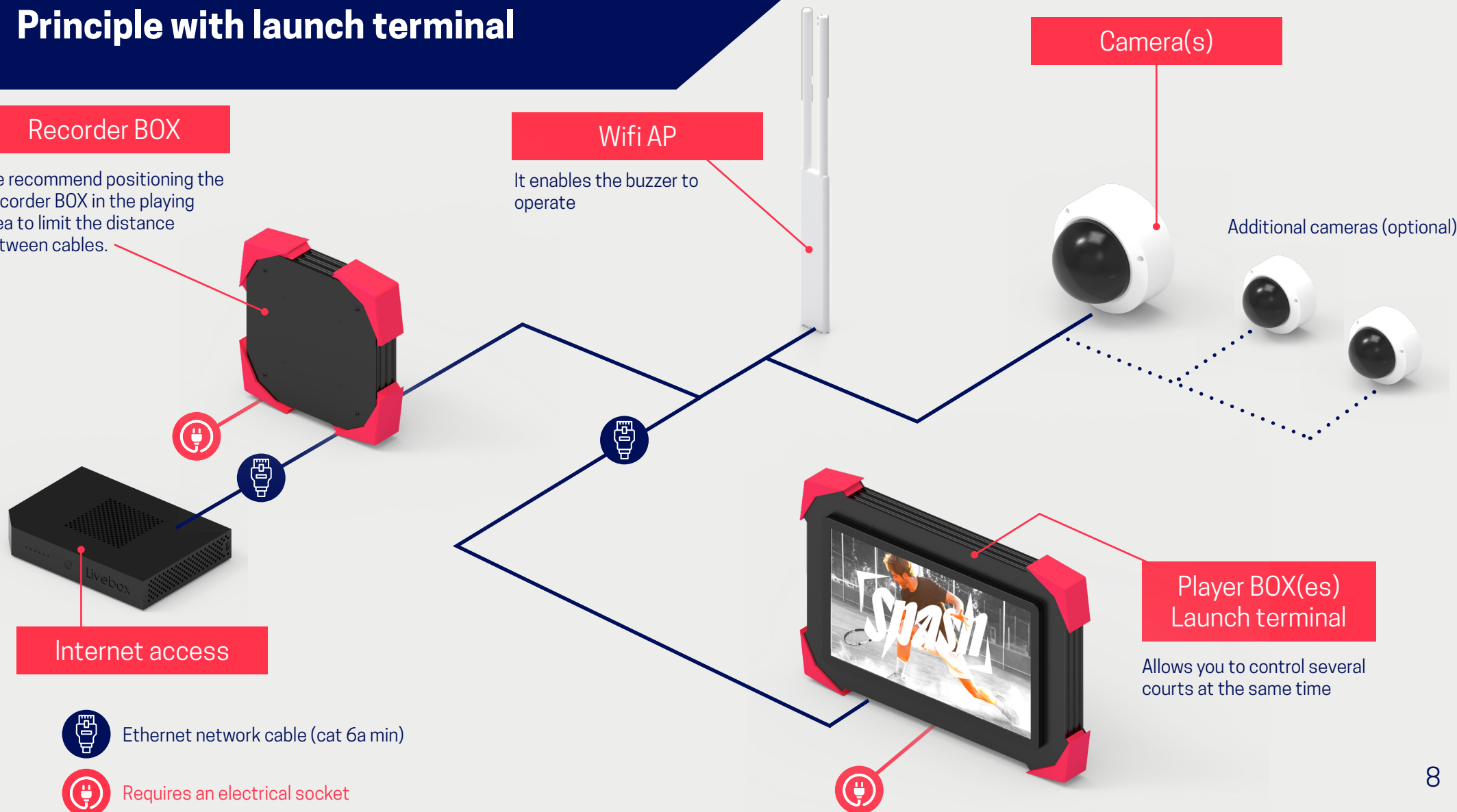
Internet access



Ethernet network cable (cat 6a min)



Requires an electrical socket



PREREQUISITES



PREREQUISITES



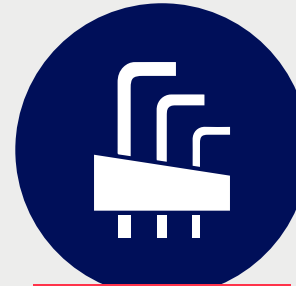
Equipment required for installation



DRILL



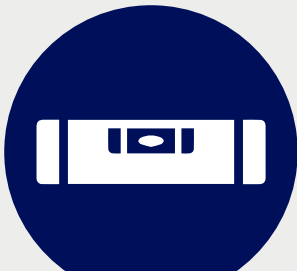
ELECTRIC SCREWDRIVER



ALLEN KEYS



SCREWDRIVER



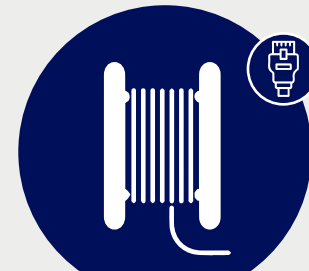
SPIRIT LEVEL



SCREWS AND PLUGS



ELECTRIC CABLE



NETWORK CABLE

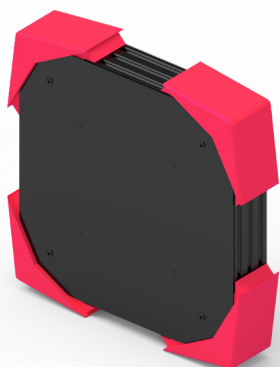
SPECIFICATION SHEET



SPECIFICATION SHEET



Recorder BOX



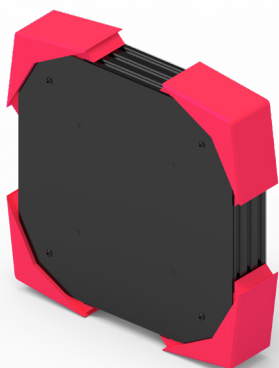
RECORDER BOX

Interface	
Ethernet interface	1 Port WAN 10/100/1000 Mbps
Wifi interface	2.4 Ghz - 5 Ghz, 300 Mbps (2.4Ghz), 867 Mbps (5Ghz)
Switch interface	8 Ports POE LAN 10/100/1000 Mbps, 30W /port, 62W Total
Reset	Hardware button
General	
Power	Connections via terminals 110-240V 50-60Hz Power consumption <55W, max 110W
Dimensions	373.4 x 373.4 x 161 mm
Weight	8.2 Kgs
Environmental conditions	
Working temperature	0°C - 50°C
Humidity level	10% - 80 %
Storage temperature	-5°C - 60 °C
Storage humidity	0% - 70%
Altitude	Below 5000m
Certifications	
Protection	IP54
Standards	CE, FCC, ROHS

SPECIFICATION SHEET



Switch BOX



BOX SWITCH

Interface	
Switch interface	8 Ports POE LAN 10/100/1000 Mbps, 30W /port, 62W Total
Reset	Hardware button
General	
Power	Connections via terminals 110-240V 50-60Hz Power consumption <30W, max 62W
Dimensions	373.4 x 373.4 x 161 mm
Weight	6.2 Kgs
Environmental conditions	
Working temperature	0°C - 50°C
Humidity level	10% - 80 %
Storage temperature	-5°C - 60 °C
Storage humidity	0% - 70%
Altitude	Below 5000m
Certifications	
Protection	IP54
Standards	CE, FCC, ROHS

SPECIFICATION SHEET



Player BOX



PLAYER BOX

Interface	
Ethernet interface	1 Port LAN 10/100 Mbps
Wifi interface	2.4Ghz, 300Mbps
Audio	8 ohms 5W
Reset	Hardware button
General	
Power	Connections via terminals 110-240V 50-60Hz Power consumption 45W
Dimensions	802.4 x 541.9 x 125 mm
Weight	23 Kgs
Environmental conditions	
Working temperature	0°C - 50°C
Humidity level	10% - 80 %
Storage temperature	-5°C - 60 °C
Storage humidity	0% - 70%
Altitude	Below 5000m
Certifications	
Protection	IP54
Standards	CE, FCC, ROHS

SPECIFICATION SHEET



SPASH TV



SPASH TV

Interface	
Ethernet interface	1 Port LAN 10/100 Mbps
Wifi interface	2.4Ghz, 300Mbps
Audio	8 ohms 5W
Reset	Hardware button
General	
Power	Connections via terminals 110-240V 50-60Hz Power consumption 45W
Dimensions	1315 x 844 x 75 mm
Weight	35 kgs
Environmental conditions	
Working temperature	0°C - 50°C
Humidity level	10% - 80 %
Storage temperature	-5°C - 60 °C
Storage humidity	0% - 70%
Altitude	Below 5000m
Certifications	
Protection	IP54
Standards	CE,FCC,ROHS

PACKS

STARTER PACK



PACKS STARTER PACK

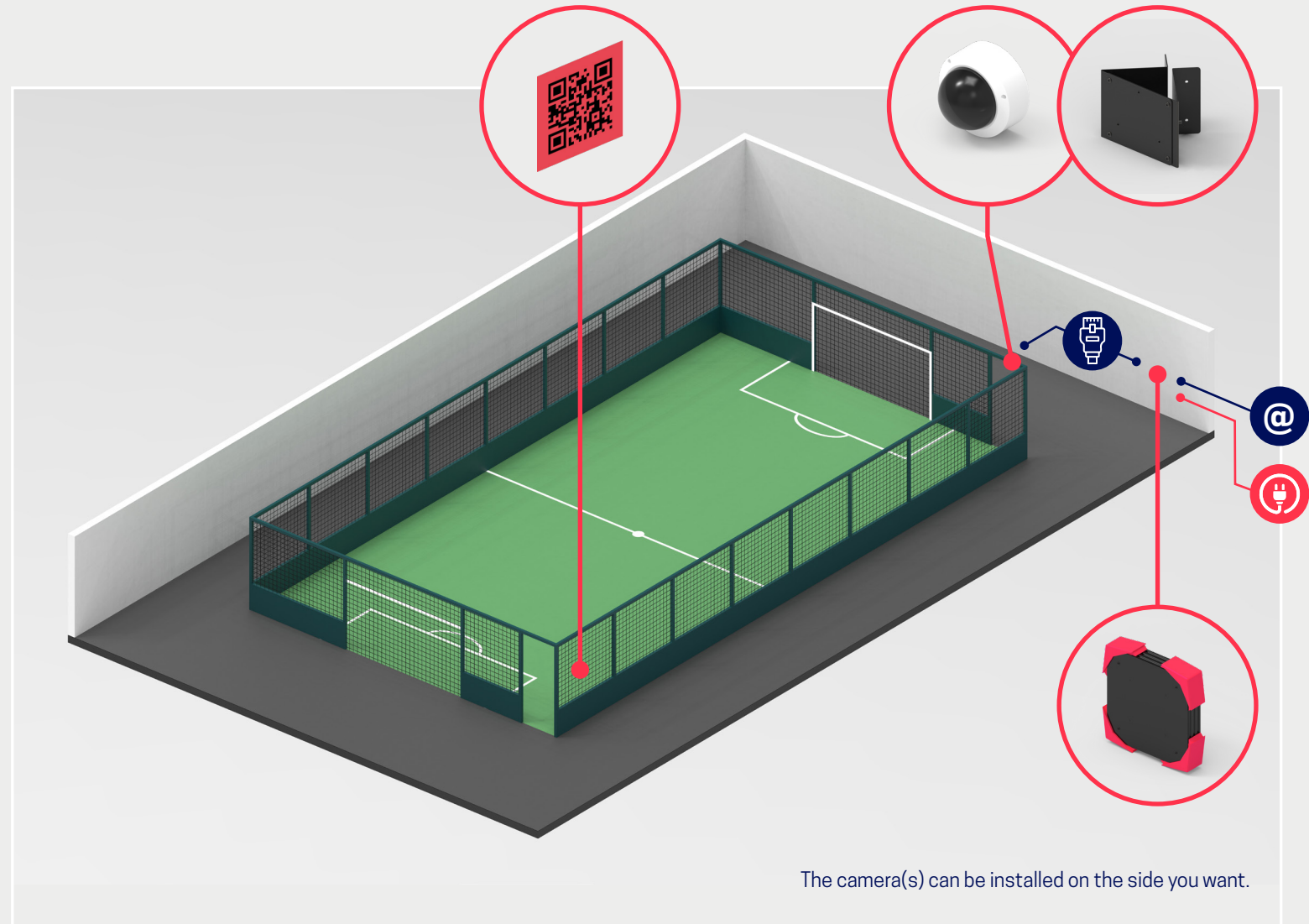


STARTER PACK equipment:

- x1 **RECORDER BOX**
- x1 **camera**
- x1 **camera support
(omega type)**
- x1 **QR code holder**

Options:

- Additional cameras
- Buzzers



PACKS

PACK PLAYER



PACKS PACK PLAYER

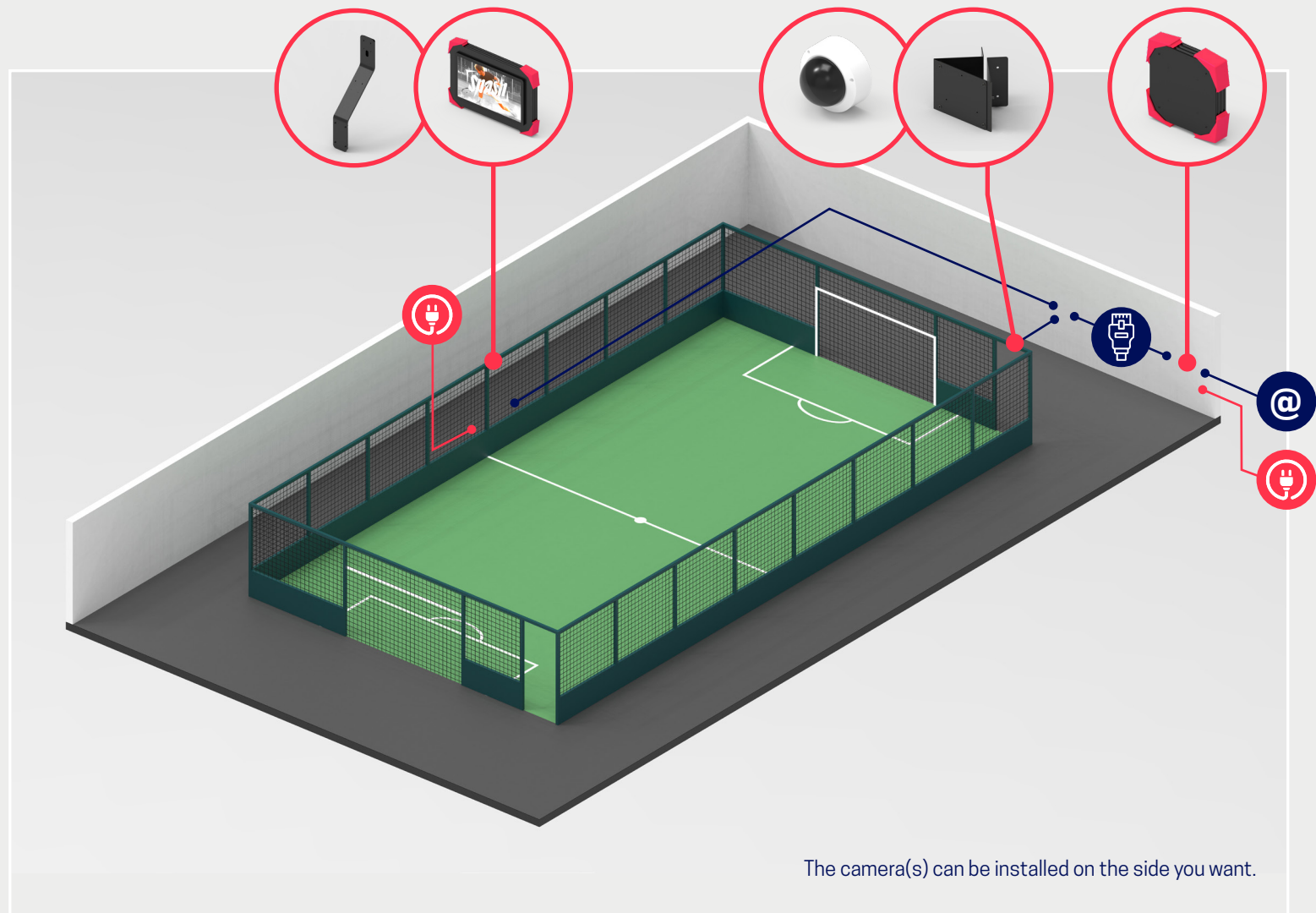


STARTER PACK equipment:

- x1 **RECORDER BOX**
- x1 **camera**
- x1 **camera support (omega type)**
- x1 **PLAYER BOX**
- x1 **BOX FOOT support**
- x1 **BP cap** (if outdoor)

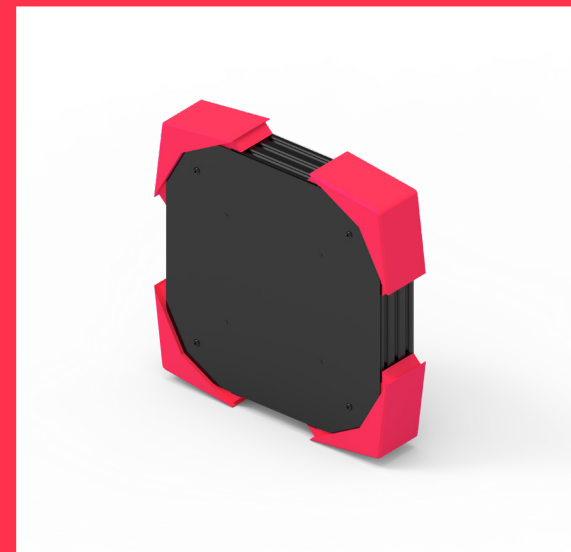
Options:

- Additional cameras
- Buzzers



INSTALLATION INSTRUCTION

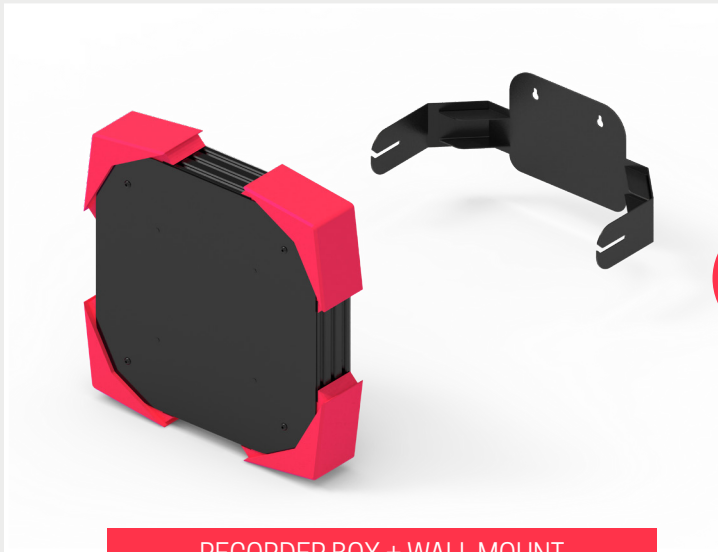
RECORDER BOX / SWITCH BOX



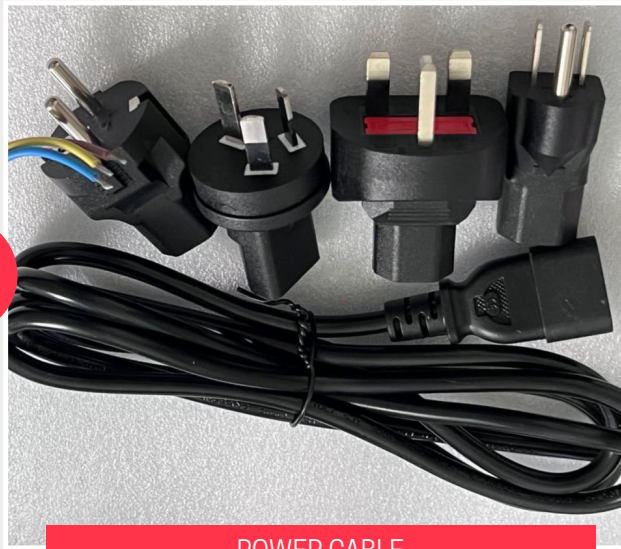
INSTALLATION INSTRUCTIONS RECORDER / SWITCH BOX



Equipment included in the box (depending on version)



RECORDER BOX + WALL MOUNT



POWER CABLE



NETWORK CABLE 2 METRES

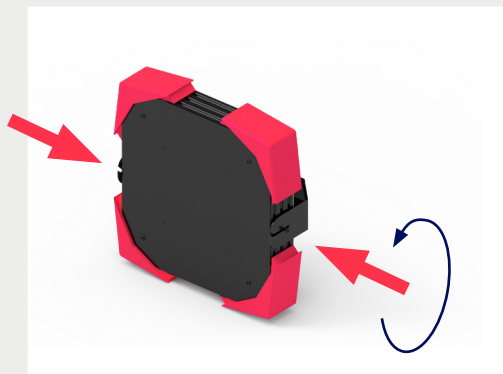


INSTALLATION INSTRUCTIONS RECORDER / SWITCH BOX

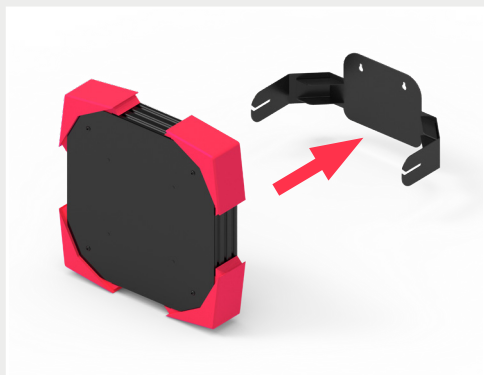


1

Preparation



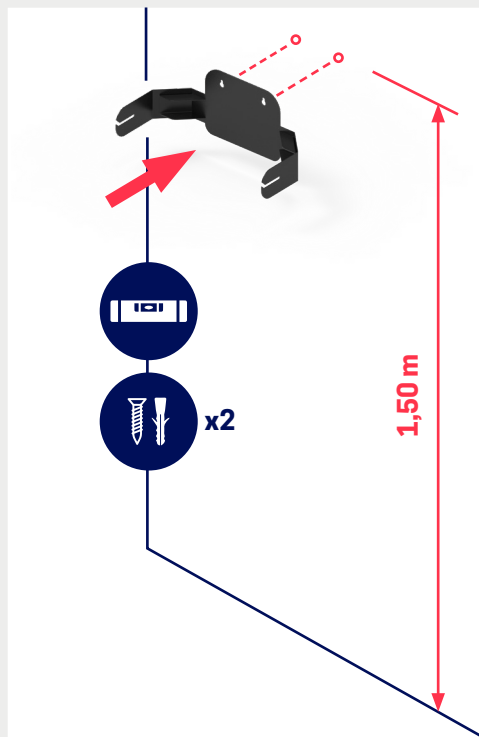
- Slightly unscrew the two screws on each side.



- Remove the wall mount.

2

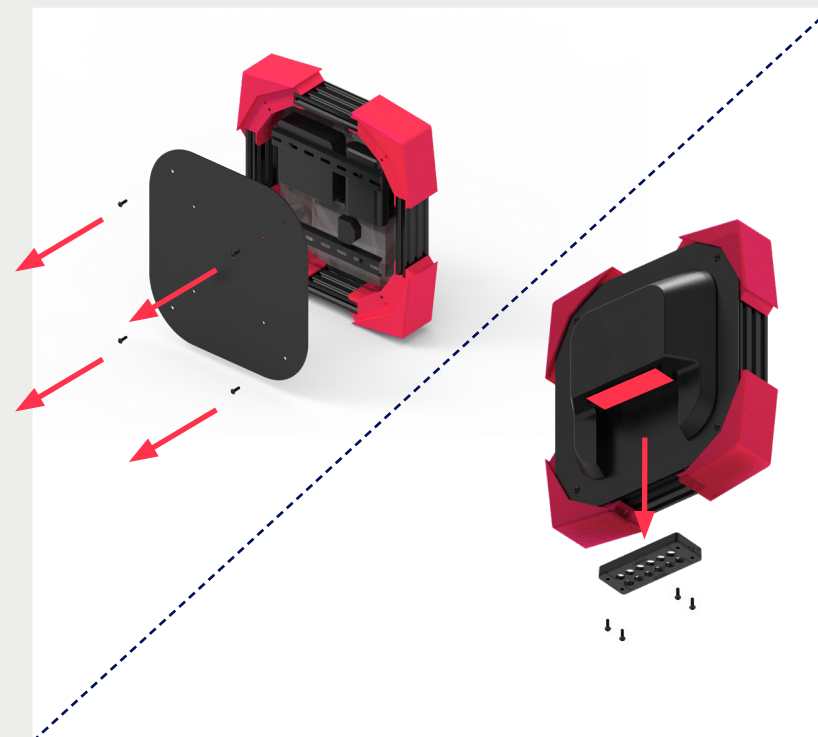
Fixing the wall



- Fix the mount to the wall using a spirit level.
- We recommend a height of 1.50 metres to enable you to work properly.
- This box must be accessible for maintenance.

3

Dismantling before wiring



- Loosen the screws on the front cover
- Remove the cable panel screws and then the two parts of the panel

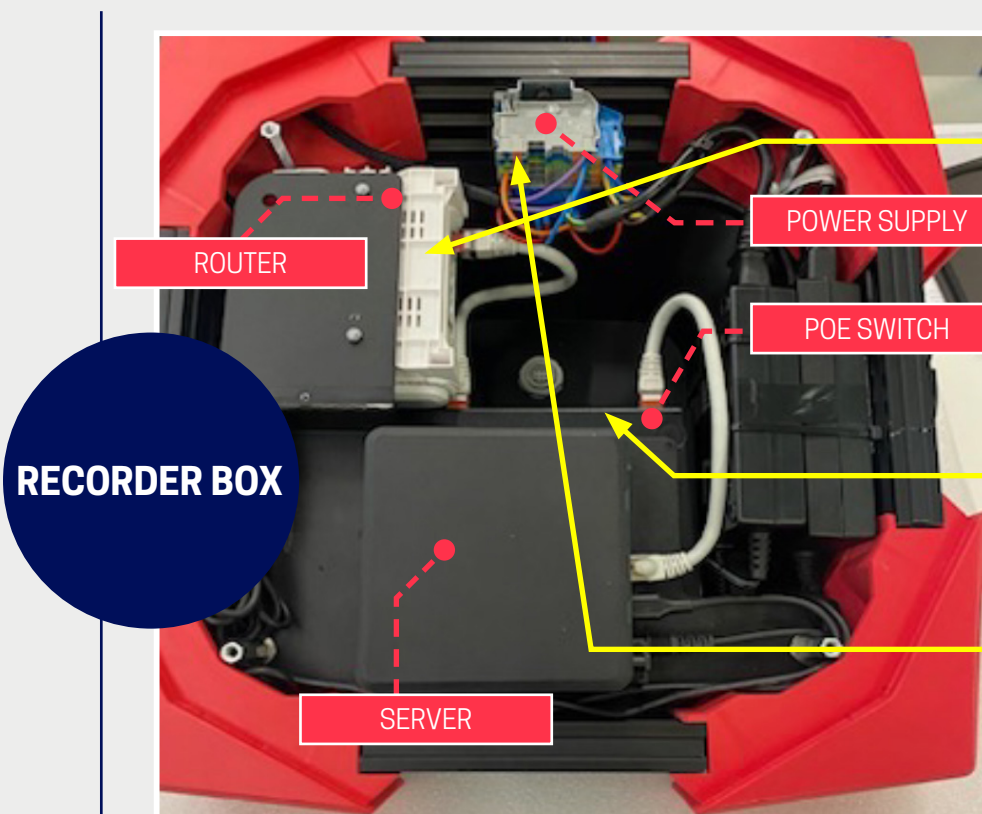
INSTALLATION INSTRUCTIONS RECORDER / SWITCH BOX



4.1

Wiring and power supply

RECORDER BOX



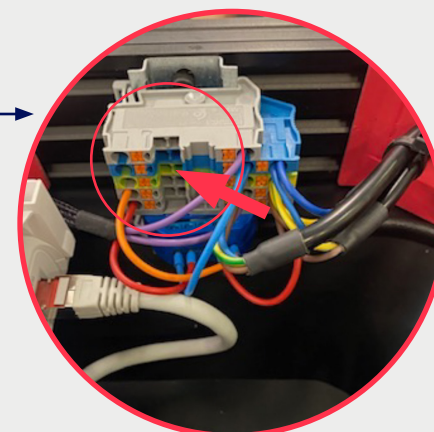
1

▪ Connect your Internet access to the router on the WAN port.



2

▪ Connect the other SPASH equipment to the POE switch ports



3

▪ Connect the power supply to the terminal block (phase / earth / neutral)

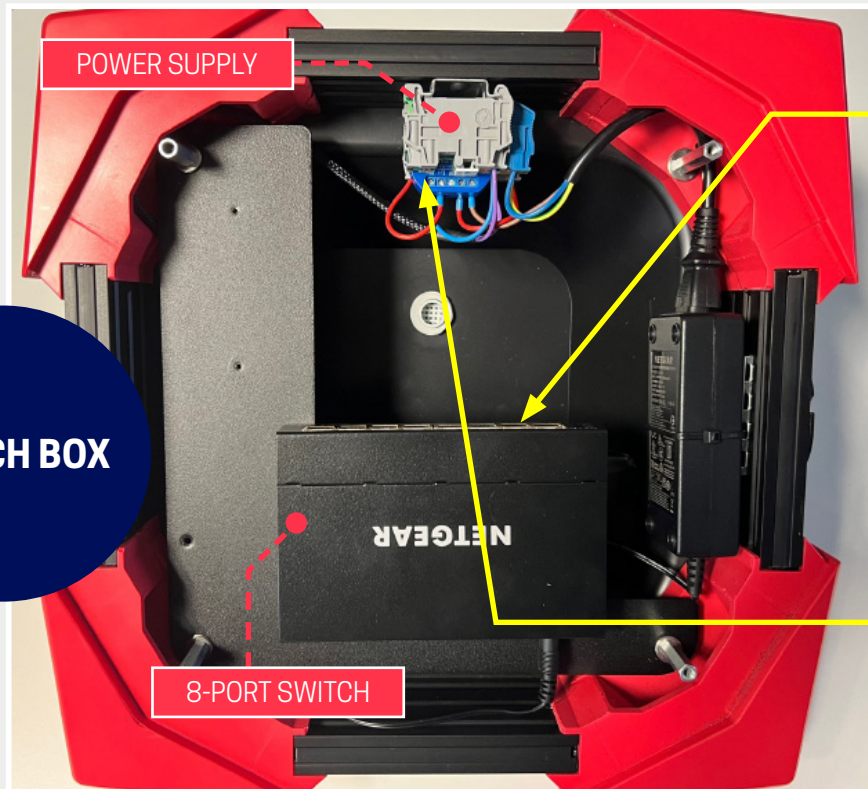
INSTALLATION INSTRUCTIONS RECORDER / SWITCH BOX



4.2

Wiring and power supply

SWITCH BOX



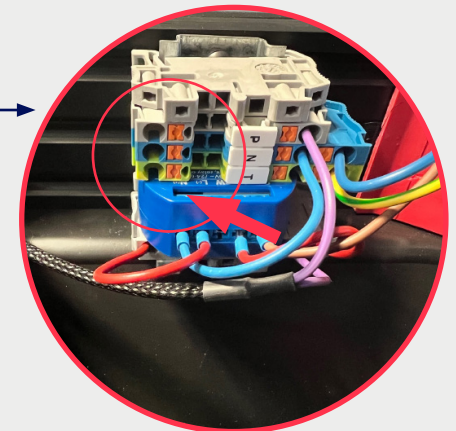
1

- Connect the other SPASH equipment to the switch ports.



2

- Connect the power supply to the terminal block (phase / earth / neutral)

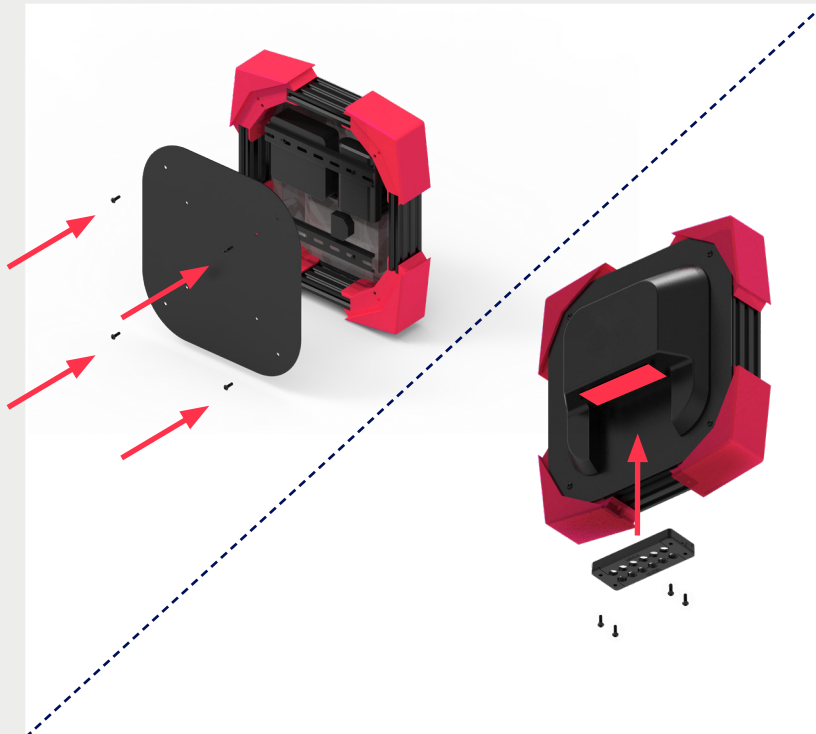


INSTALLATION INSTRUCTIONS RECORDER / SWITCH BOX



5

Reassembly after wiring



- Tighten screws on the front cover.
- Insert the two parts of the cable panel and screw them back together.

6

Mounting BOX on wall bracket



- Engage the screws in the groove in the bracket then tighten the 4 screws.

INSTALLATION INSTRUCTION

PLAYER BOX



INSTALLATION INSTRUCTIONS PLAYER BOX



Equipment included in the box (depending on version)



INSTALLATION INSTRUCTIONS PLAYER BOX



Fixing the FOOT BOX support

1

Choosing the position of the screen on the FOOT BOX support

We advise you to position the screen in the middle of the pitch 2 possible positions of the screen on the support:

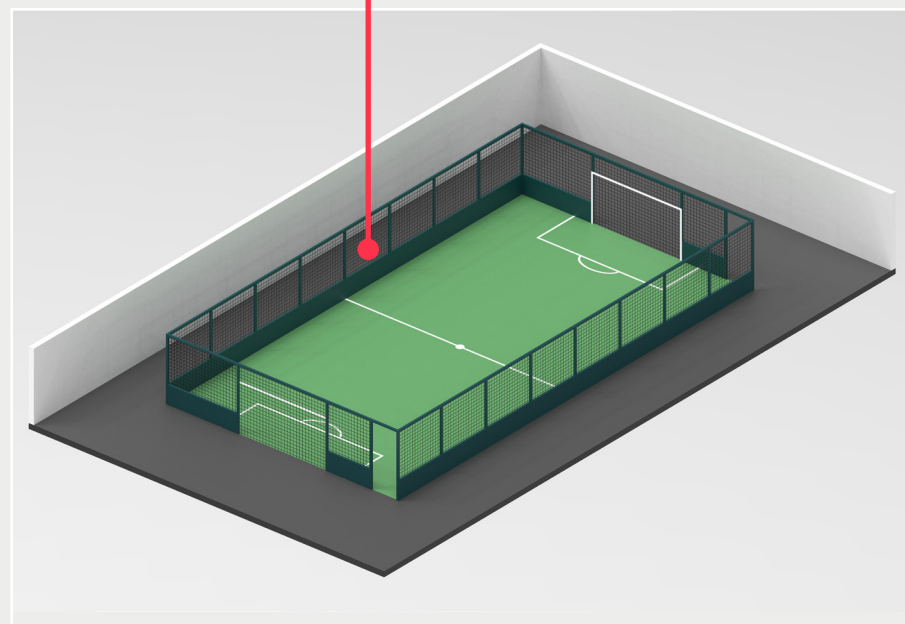
- **HIGH POSITION:** for a comfortable view and if the tension of your nets allows it
- **LOW POSITION:** to avoid impacts with a ball



HIGH POSITION



LOW POSITION



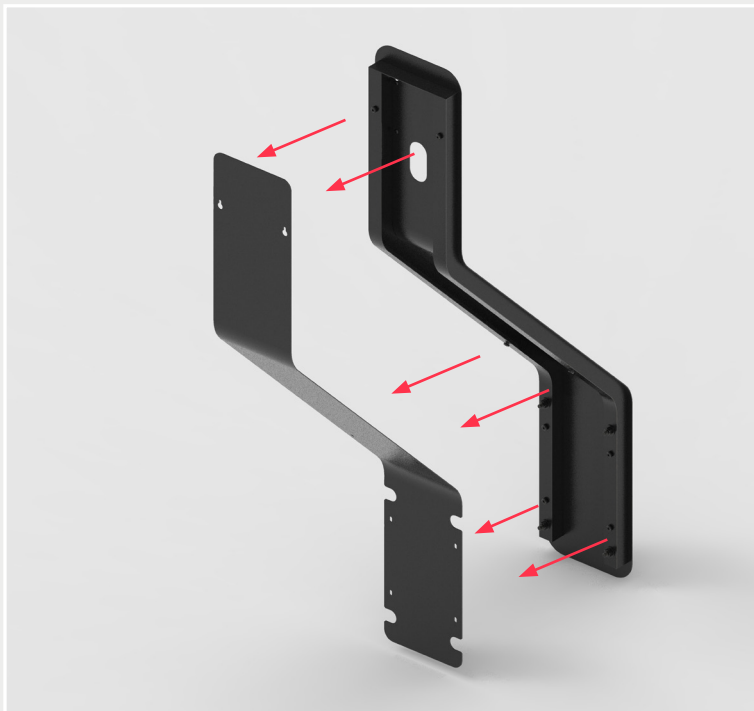
INSTALLATION INSTRUCTIONS PLAYER BOX



Fixing the FOOT BOX support

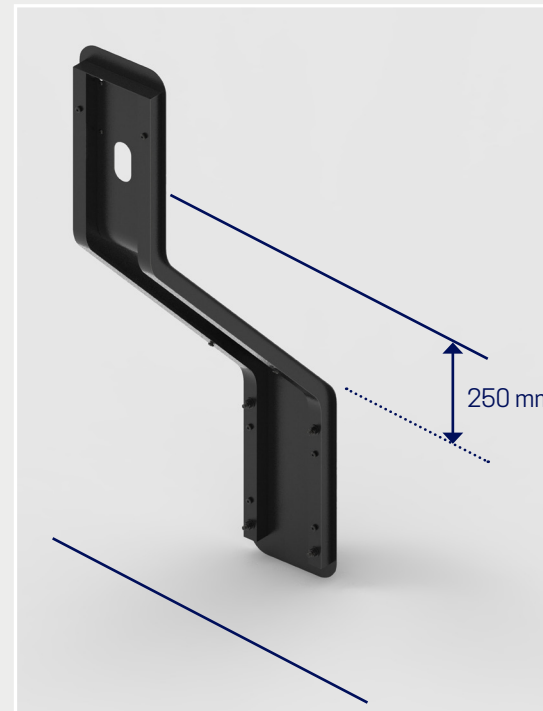
2

Unscrew the 6 screws to remove the cover



3

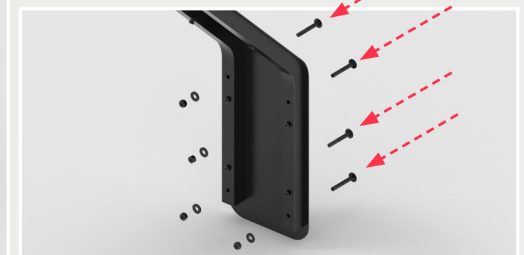
Fixing the support to the railing



▪ We recommend positioning the lower part of the support 250 mm from the top of the railing for a screen height of 1400 mm



▪ Mark the 4 drill holes and drill through the panel using a ø8mm drill bit



▪ Use the M8 screws and washers supplied and tighten the lock nuts

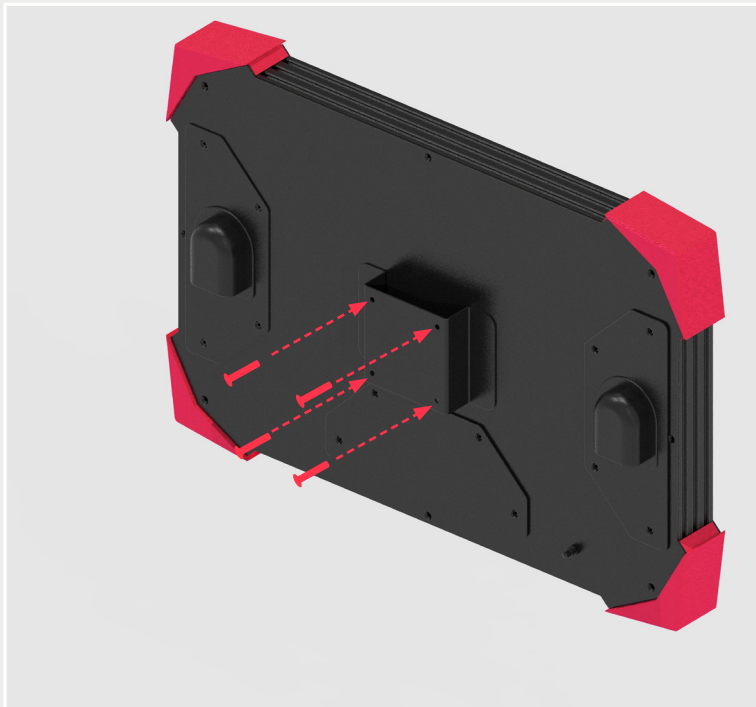
INSTALLATION INSTRUCTIONS PLAYER BOX



Fixing the FOOT BOX support

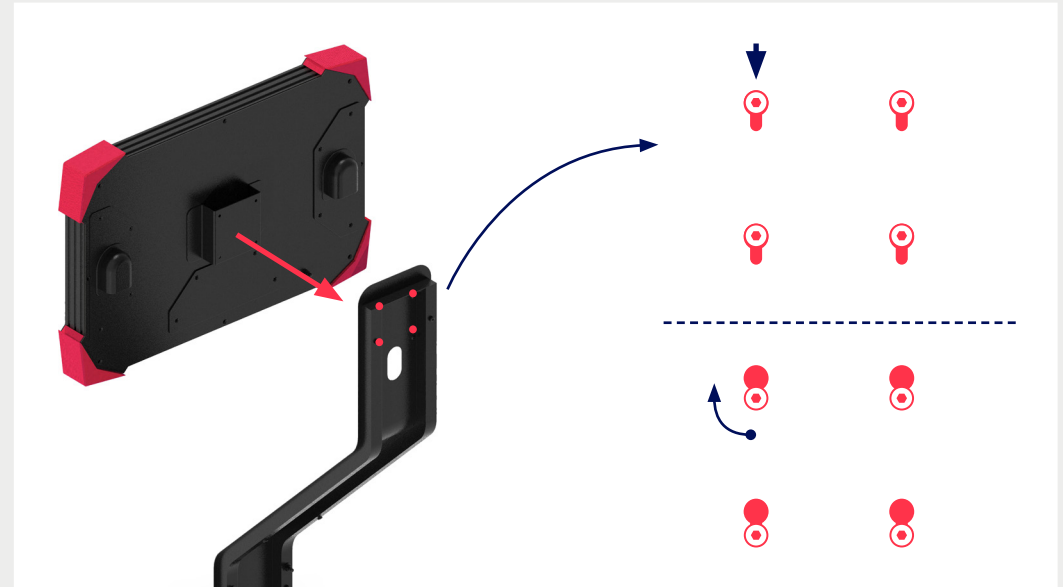
4

Screw the 4 M5 screws onto the rear support of the screen without tightening to the maximum (leave a gap of +/- 5mm)



5

Approach the screen so that the screw heads pass through the lock holes, then tighten the 4 screws fully.



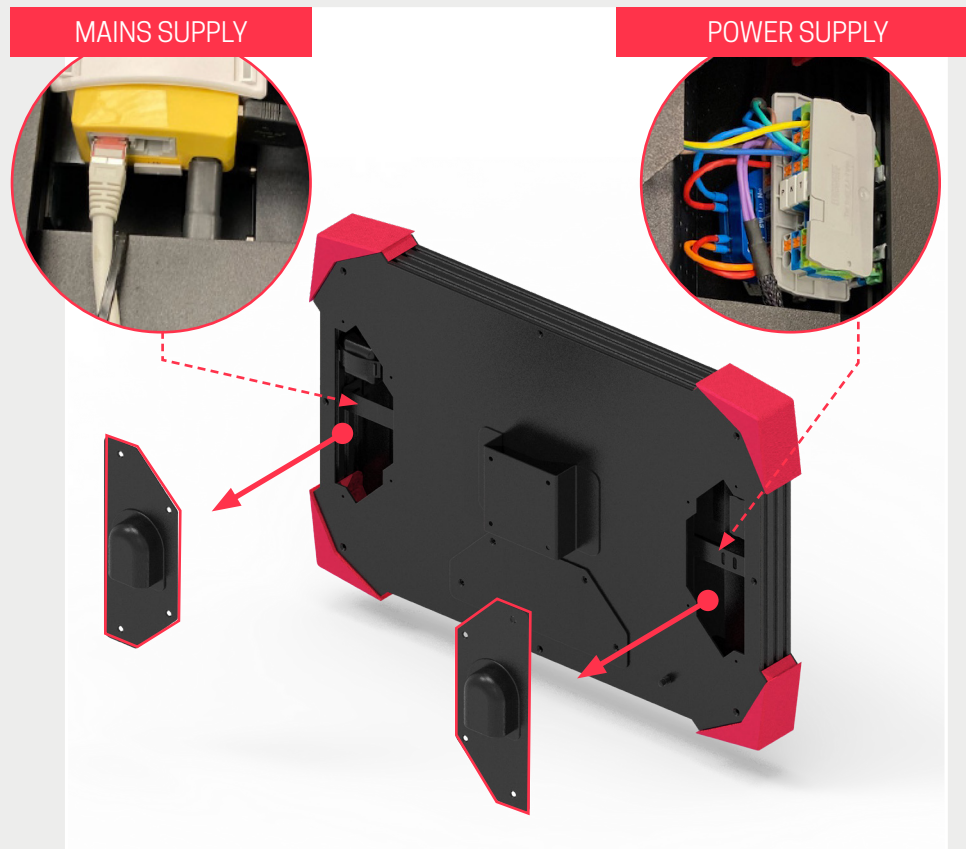
INSTALLATION INSTRUCTIONS PLAYER BOX



Fixing the FOOT BOX support

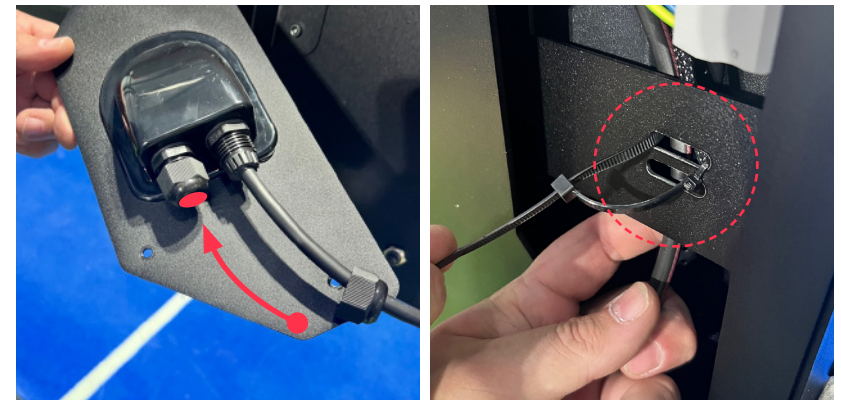
6

Open the hatches to let the cables through



7

Pass the cables through the cable glands



- Unscrew the cable glands and route the necessary cables
- Secure the cables with cable ties in the oblongs provided.

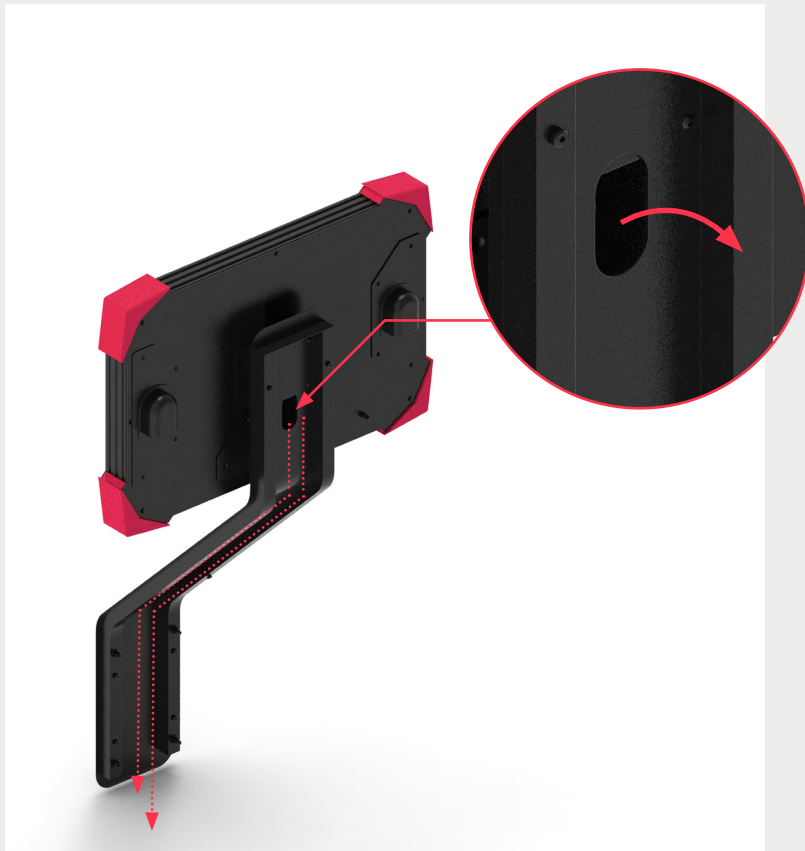
INSTALLATION INSTRUCTIONS PLAYER BOX



Fixing the FOOT BOX support

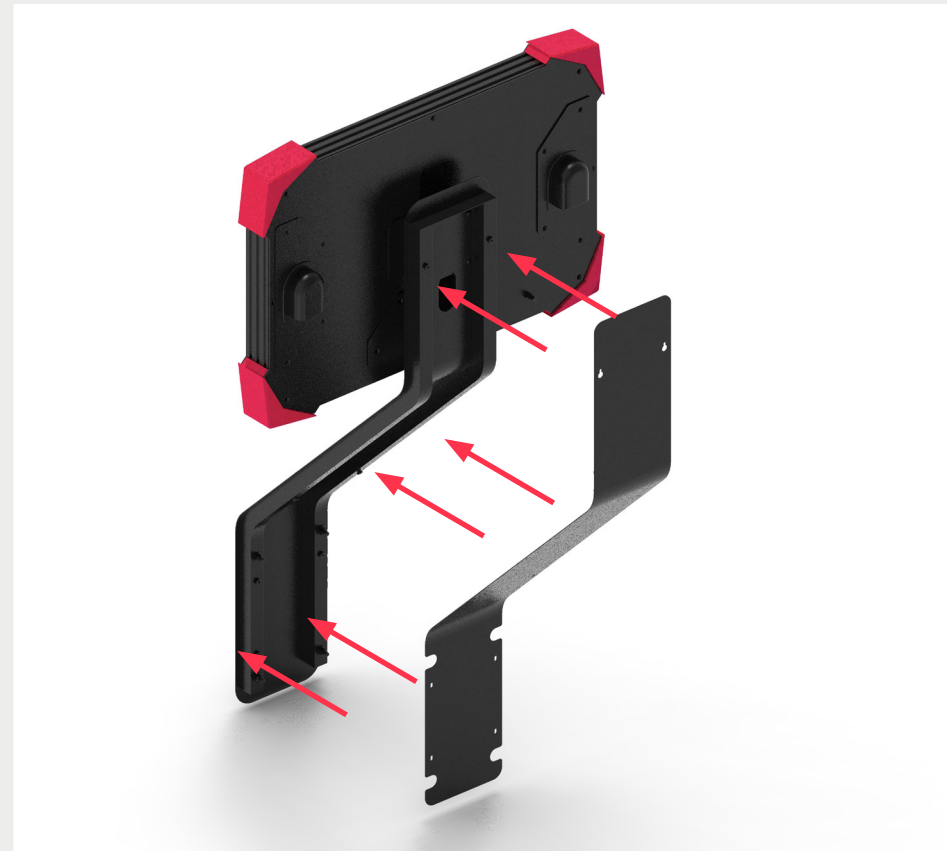
8

Route the cables inside the support



9

Close the support cover with the screws



ACCESSOIRES
CAMERAS



ACCESSOIRES CAMERAS



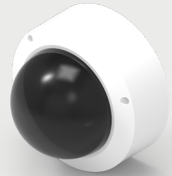
Equipment included for the camera

x1



CAMERA SUPPORT

x1



CAMERA

ACCESSOIRES CAMERAS



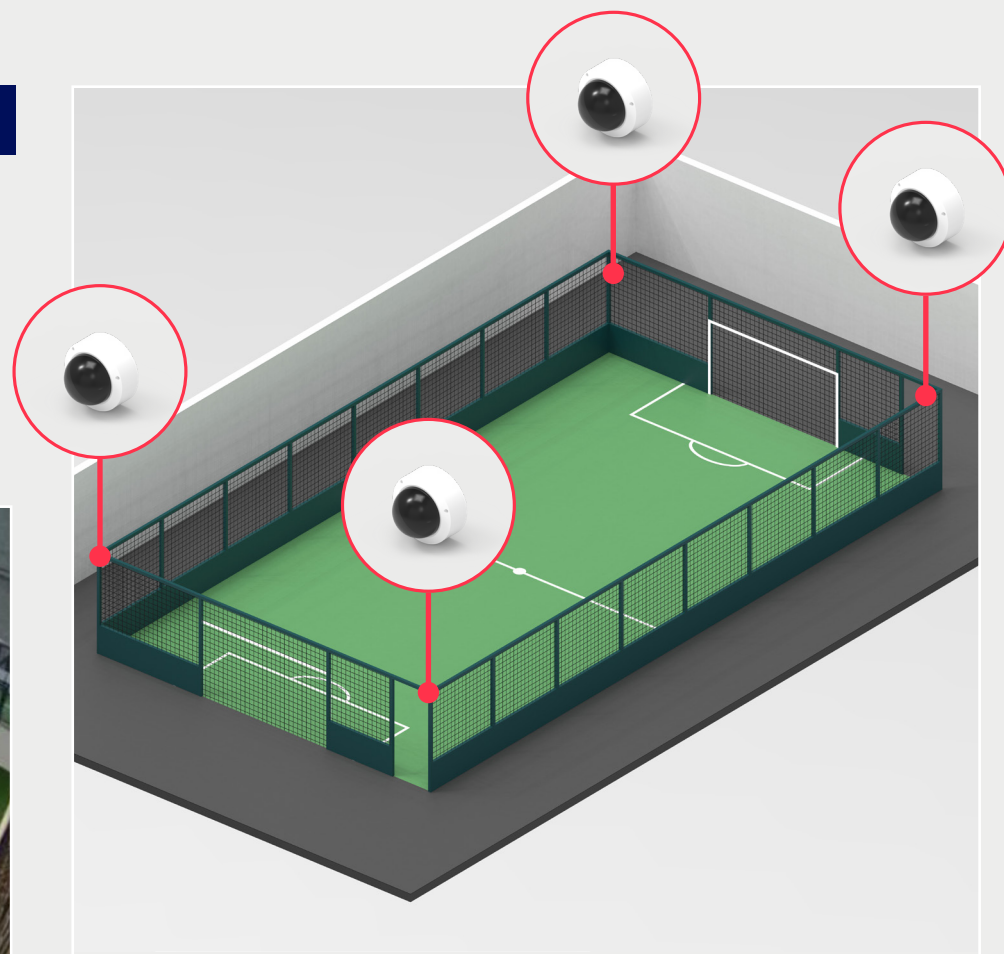
Camera mounting

1

Choosing the position of the camera(s)

The pack consists of 1 or more cameras, positioned in the corners

Once the camera has been installed, adjust the angle to obtain a view identical to the photo below:



ACCESSOIRES CAMERAS



Fixing the wall mount

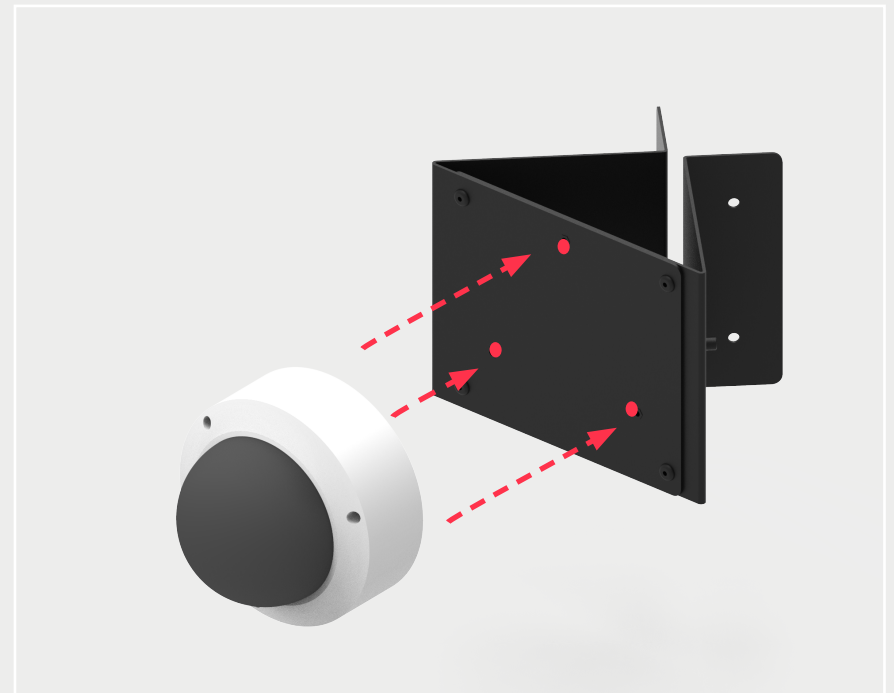
1

Remove the dome using the key



2

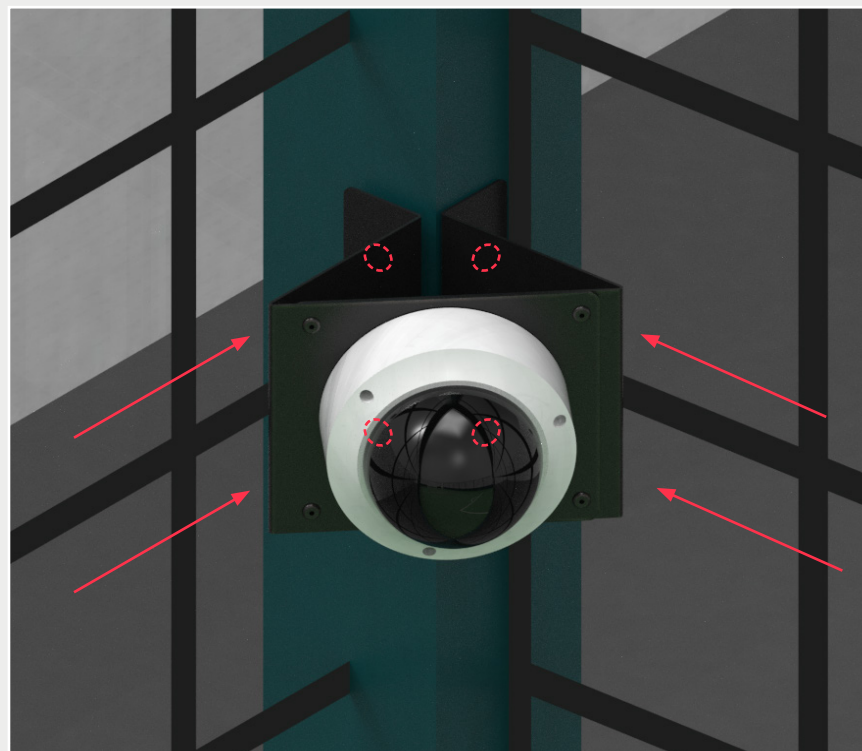
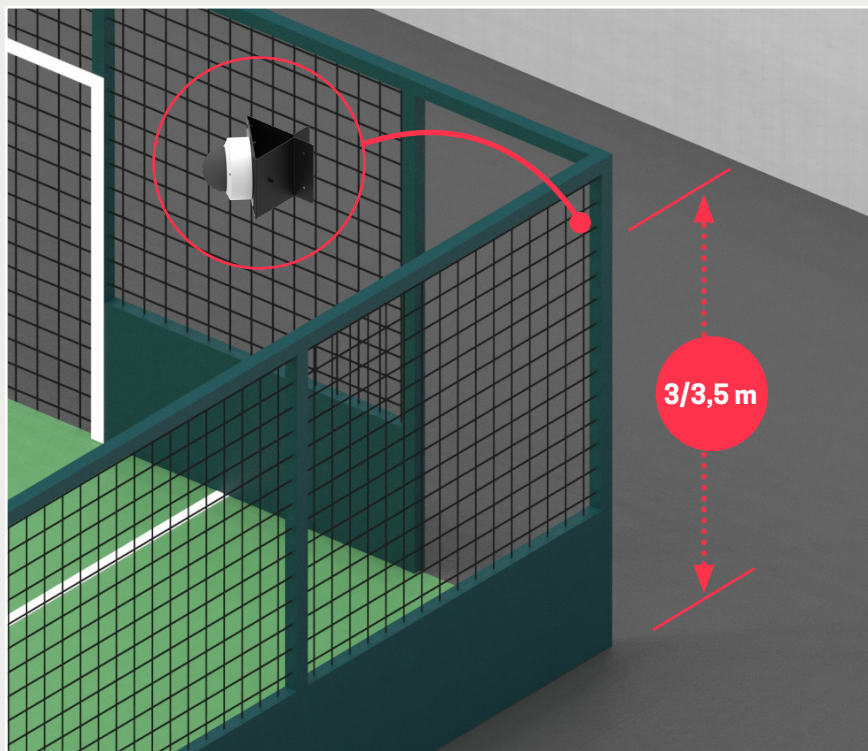
Screw the camera onto the omega support using the screws supplied



Fixing the wall mount

3

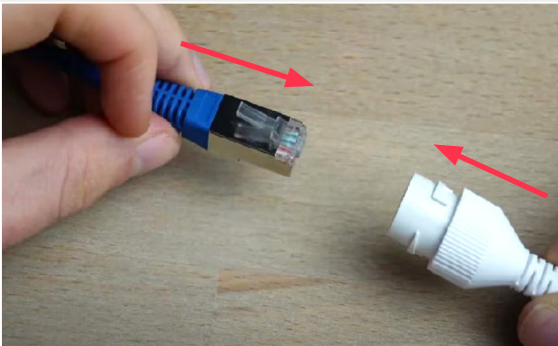
Screw the bracket to the pole. We recommend a height of 3 to 3.5 m to ensure a good viewing angle. We recommend fixing with 4 self-drilling screws (not supplied).



Mounting the bracket

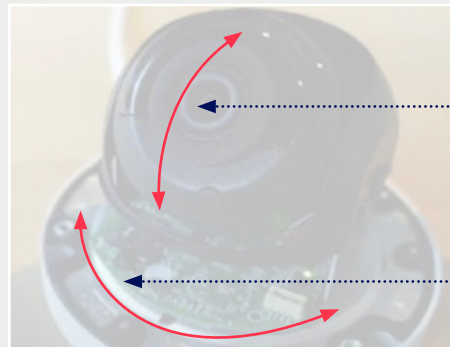
4

Connecting the camera



5

Adjusting the camera angle



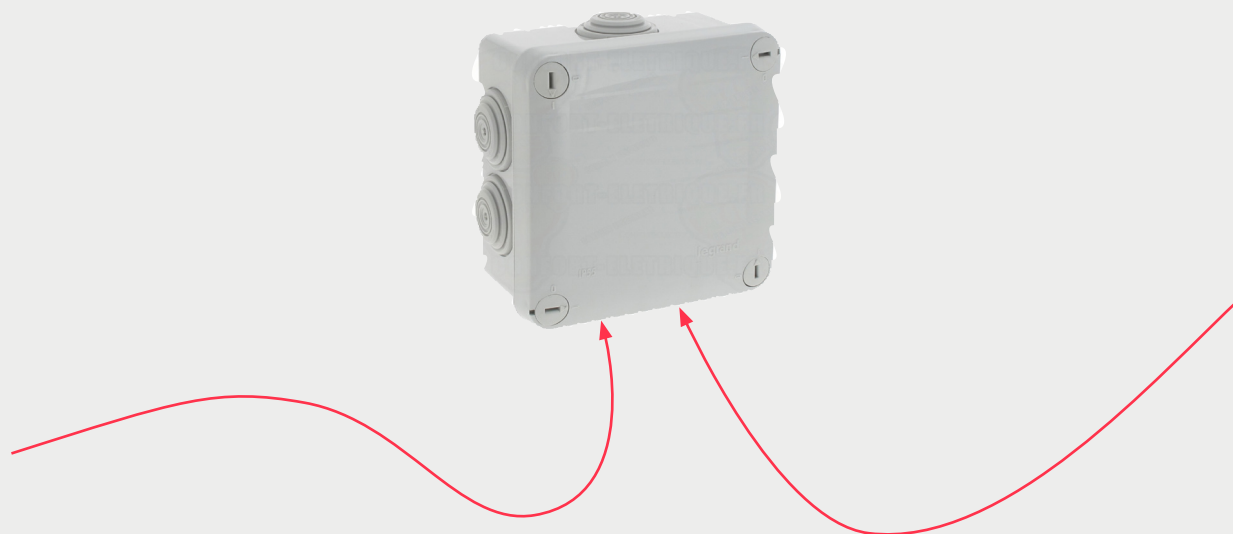
Vertical adjustment

Horizontal adjustment

Connecting the camera

The camera is wired and has an RJ45 connector. **For outdoor installation, you will need to seal the connection using a standard PLEXO box (not supplied).**

It is advisable to make a drip loop with the cable and to make the passages through the underside of the box to avoid water infiltration. Otherwise, refer to the camera manual.



ACCESSOIRES CAMERAS

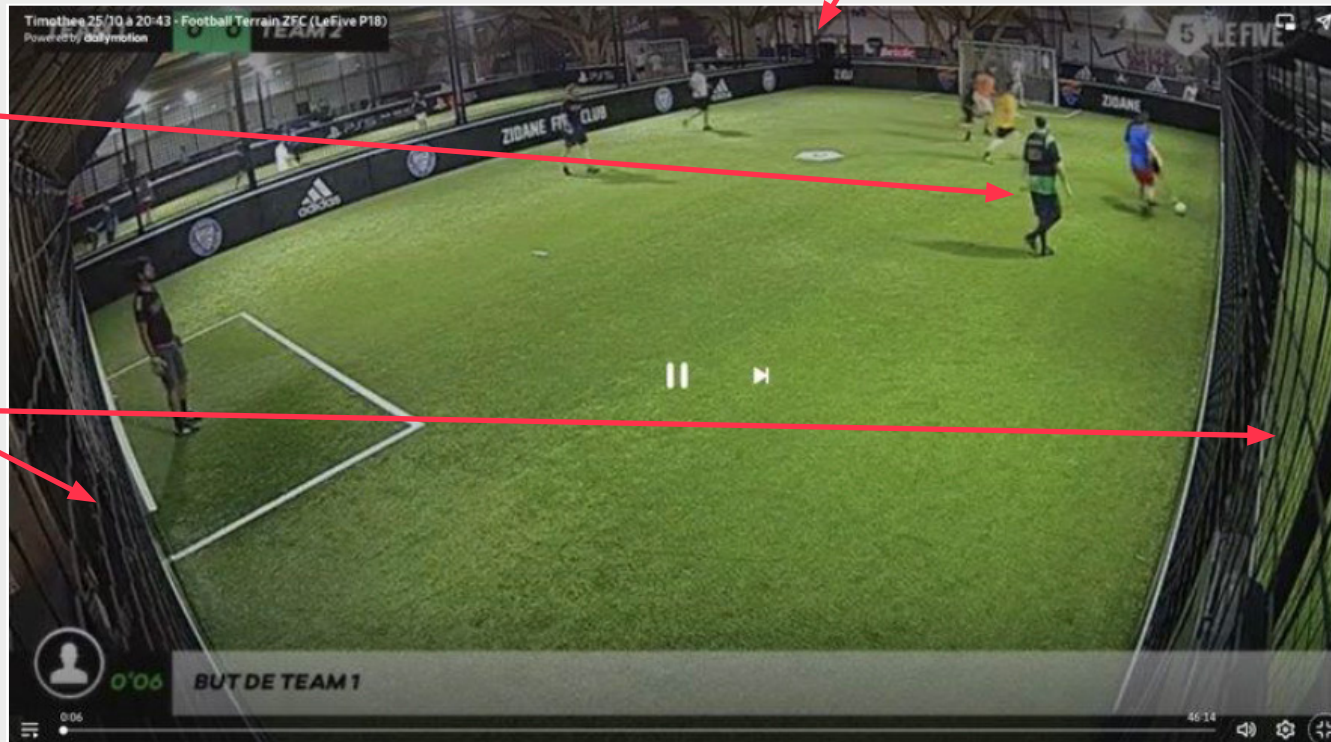


Adjusting the camera angle

Adjust the height of the camera so that you can see 2.5m into the opposite corner.

Adjust the camera angle so that a person in the centre of the image is straight upright.

Set the camera to have the same distance to the left and right.



ACCESSOIRES

BUZZERS



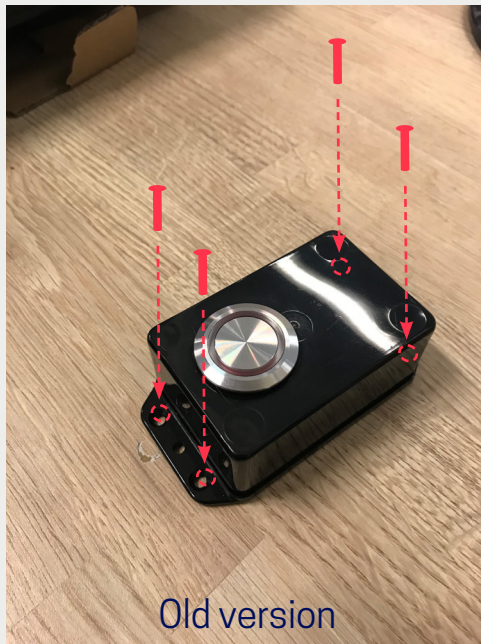
ACCESSOIRES BUZZERS



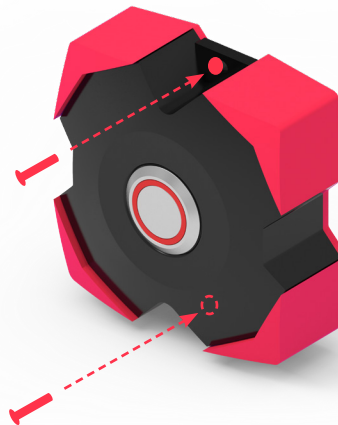
Fixing the buzzers

1

Attach the buzzers to the structures of your choice



- Use the fixing holes provided.
- Buzzers can be fixed to poles using clamps.



2

The button's position can be changed to suit your requirements



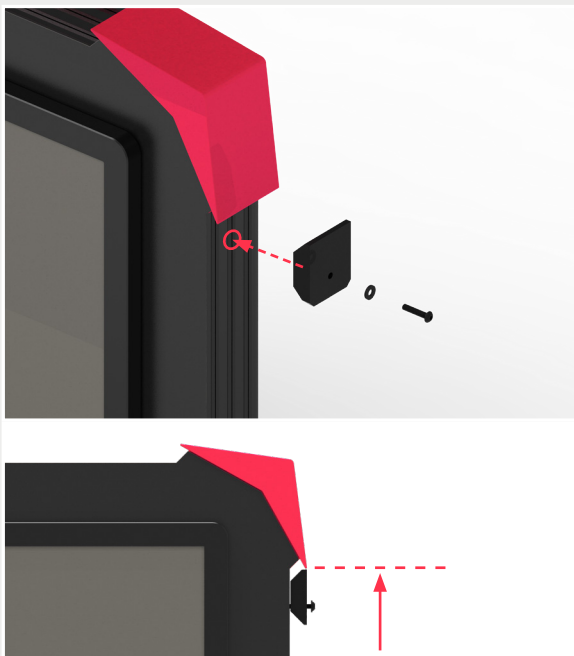
ACCESSOIRES
CAP



Fixing the PLAYER BOX cap

1

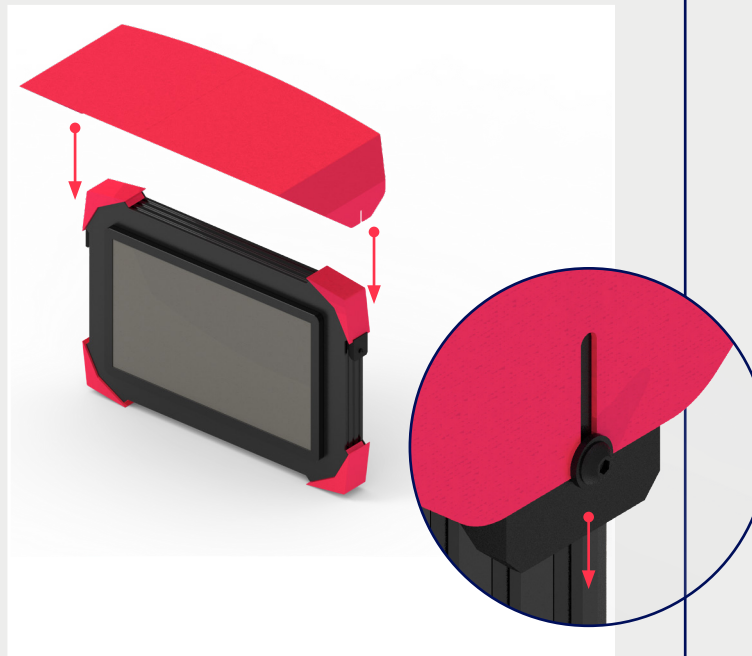
Screw the spacers on both sides



- Do not screw all the way in, leave a gap of +/-5 mm
- The spacers must be fixed against the pink angles.

2

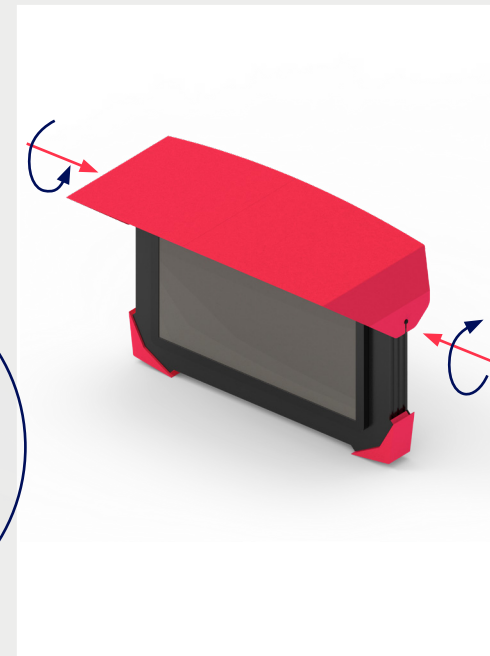
The button's position can be changed to suit your requirements



- Fit the cap by sliding the slots through the screws in the spacers.

2

The button's position can be changed to suit your requirements



- Finalise the installation by fully tightening the screws on the spacers.

ACCESSOIRES

WIFI AP



ACCESSOIRES WIFI AP



If you do not have a PLAYER BOX in your package and you wish to use SPASH buzzers or the referee tablet, you will need a SPASH wifi access. The equipment will be added to your order.

Position the equipment as close as possible to the equipped SPASH courts.

Use a Recorder BOX or Switch BOX to power the equipment via POE.



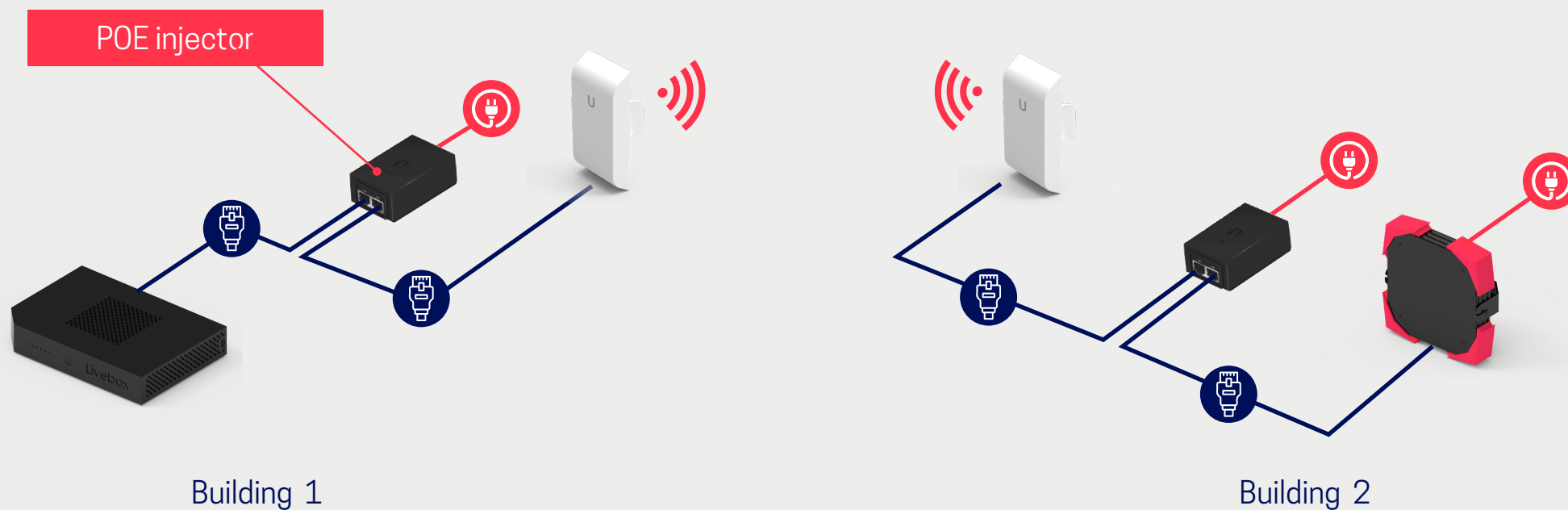
ACCESSOIRES
BRIGDE




ACCESSOIRES BRIDGE



If your pitches are not in the same building as your internet access, rather than installing a taut cable or digging a trench, we recommend that you install a wifi bridge between the two buildings to link them together. The equipment works according to the principle below.



 Ethernet network cable (cat 6a min)

 Requires an electrical socket

POST MATCHES

Post Match TV



Equipment included

x1



MINI PC

x1



WIRELESS MOUSE

x1



NETWORK PATCH CABLE

x1



HDMI CABLE

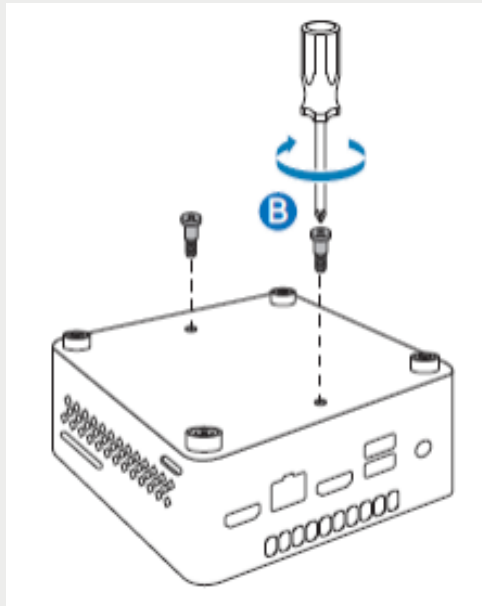
POST MATCHES Post Match TV



Mini PC mounting

1

Install the 2 screws on the PC chassis



2

Mount the bracket on the wall

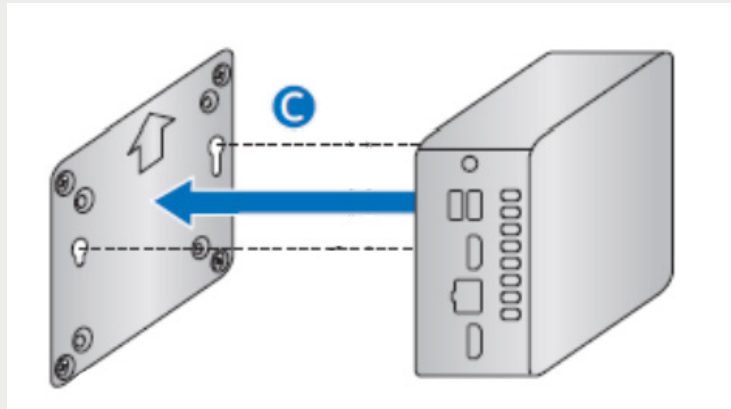


- Align the bracket with the arrow pointing upwards, then secure the bracket using 4 screws.

Mini PC mounting

3

Attach the mini PC to the bracket



- Slide the two screws into the keyhole slots, then lower the assembly to lock the mini PC in place

4

Connect the cables

- Connect the network cable
- Connect the HDMI cable between the mini PC and the TV
- Connect the USB dongle for the wireless mouse
- Connect the power cable to the mini PC When the mini PC is powered up, it should start up automatically and open the configured page..

POST MATCHES

Tactile Post-Match



POST MATCHES Tactile Post Match



Equipment included

x1



PLAYER BOX

x1



TV WALL MOUNT

x1



NETWORK PATCH CABLE

x1



POWER CABLE

POST MATCHES Tactile Post Match



Mounting the screen

1

Install the supplied VESA TV bracket at a height of 1.5m



▪ For assembly: refer to the instructions in the packaging.

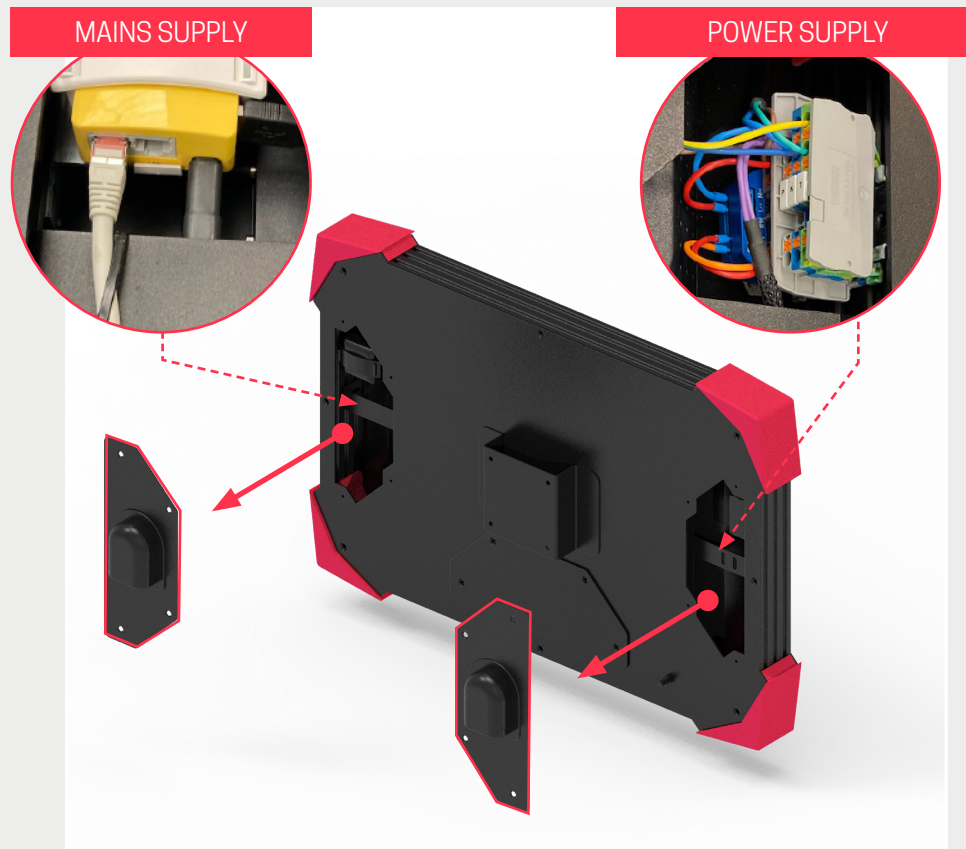
POST MATCHES Tactile Post Match



Mounting the screen

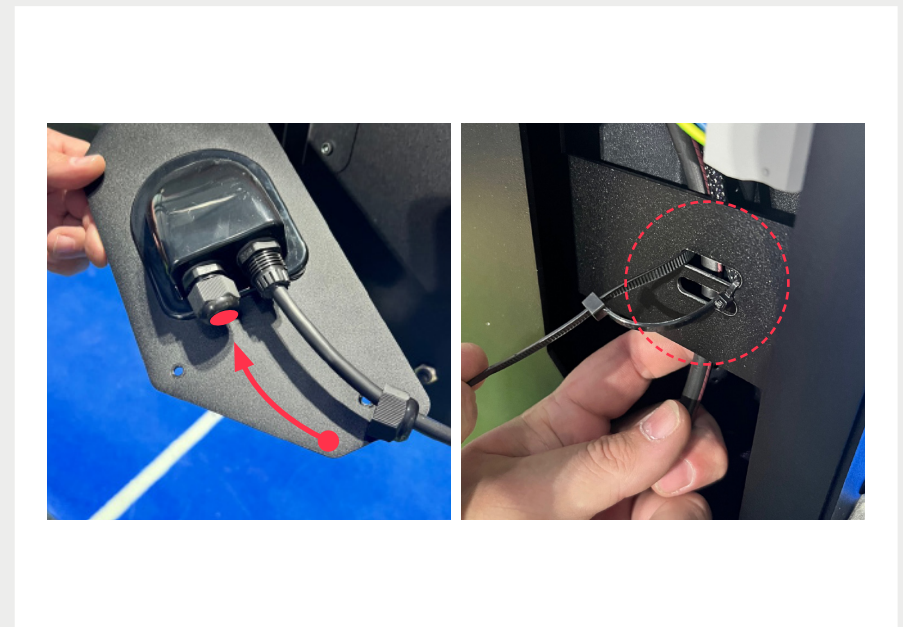
2

Remove the access covers from the BOX PLAYER



3

Pass the cables through the cable glands



- Unscrew the cable glands and route the necessary cables
- Secure the cables with cable ties in the oblongs provided

POST MATCHES Tactile Post Match



Mounting the screen

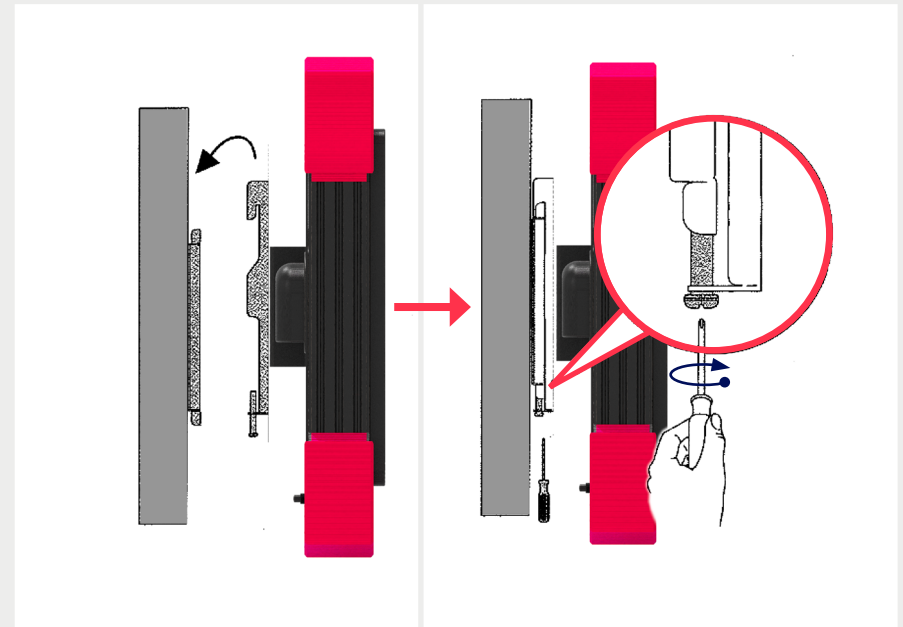
4

Remove the access covers from the PLAYER BOX



5

Install the PLAYER BOX on the VESA mount



- Attach the screen support to the rear of the PLAYER BOX
- Slide the assembly onto the wall mount and lock by tightening the locking screw

SPASH TV



Equipment included

x1



SPASH TV

x1



TV WALL MOUNT

x1



NETWORK PATCH CABLE

x1

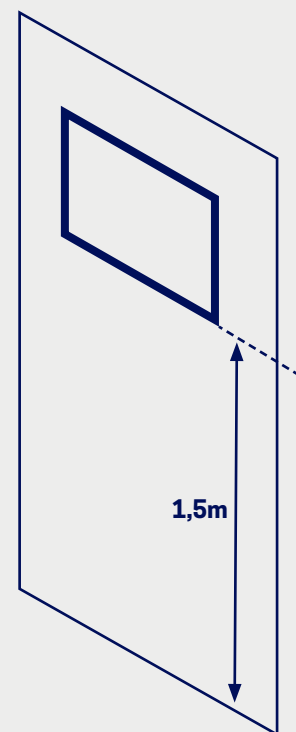
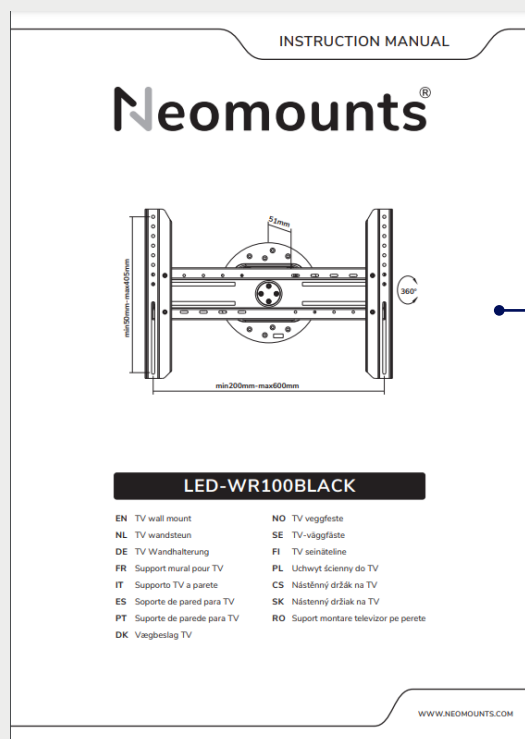


POWER CABLE

Equipment included

1

Install the supplied VESA TV bracket at a height of 1.5m

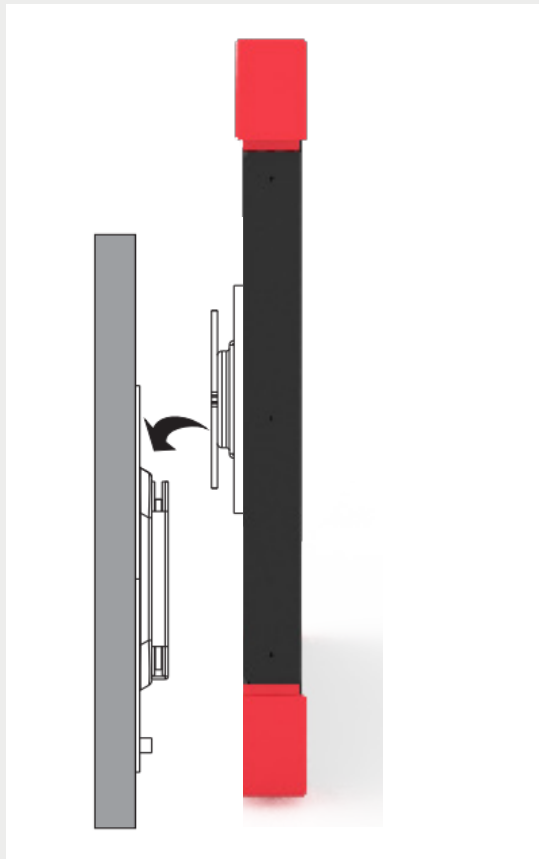


- For assembly: refer to the instructions in the packaging.

Mounting the screen

2

Position the screen in its stand



3

Connect the cables



- Connect the power cable and the network cable
SPASH TV turns on automatically when the power is on and the application is loaded directly.

COMMISSIONNING

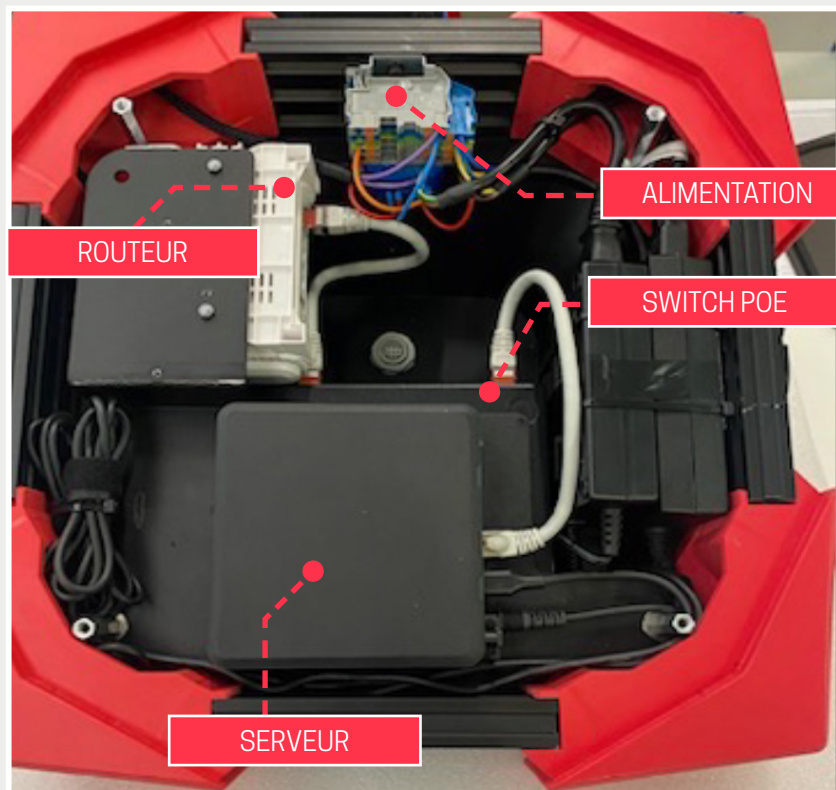
CHECKING THE SYSTEM



COMMISSIONNING

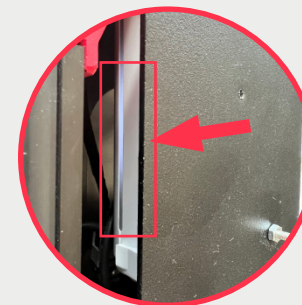


Checking the RECORDER BOX



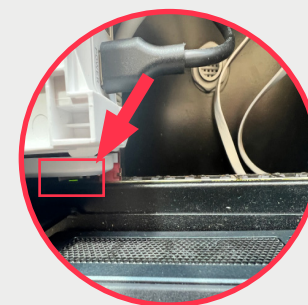
1

The light must be white and remain on continuously
The cable from your internet box must be on the WAN port



2

The switch LED must be lit



3

The server LED must be lit



4

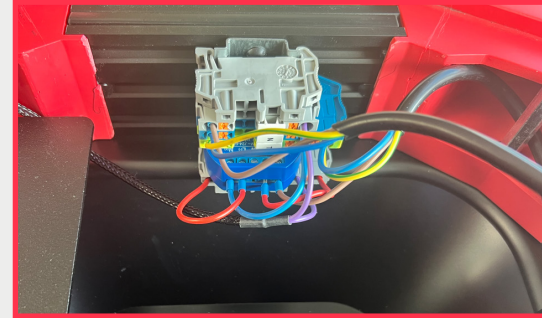
The wifi with the name SPASH_XXX must be visible on your smartphone

COMMISSIONNING



Checking the Switch Box

- 1 Connect the switch box to the mains
- 2 Check that the switch is working
- 3 Check that the LEDs are flashing for each port connected



Checking the Player Box

- 1 Connect the Player Box to the mains



- 2 When you connect the mains, the screen lights up and the software starts up.



If you see a blank page, this means that the screen is not connected to the Recorder box.

COMMISSIONNING



Checking the Player Box

- 3 Start a session
- 4 The session will start up. If it does not, check that the cameras are properly connected.



Click on the instant replay tab



Use the live view to adjust the camera angle

Checking buzzers

- 1 Launch a session
- 2 Once the session has been started, if you press the buzzer, the screen should display:



System check

- Internet access must be available
- The RECORDER BOX must be switched on
- The switch box, if present, must be switched on
- The player box must be switched on
- Camera(s) must be connected to the recorder box or switch box

You can call the SPASH hotline on **+33 4 81 69 47 33**
to control the system